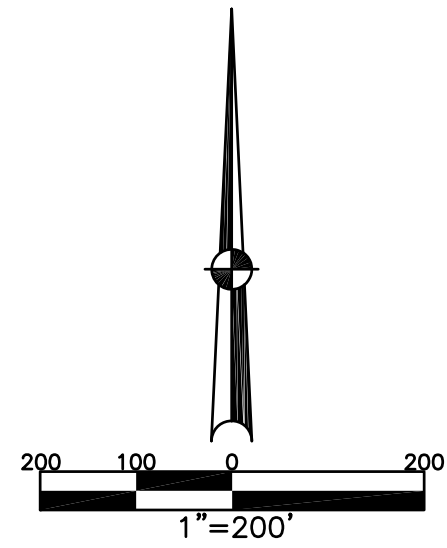


WASHINGTON TWP.
MIAMI COUNTY, OHIO

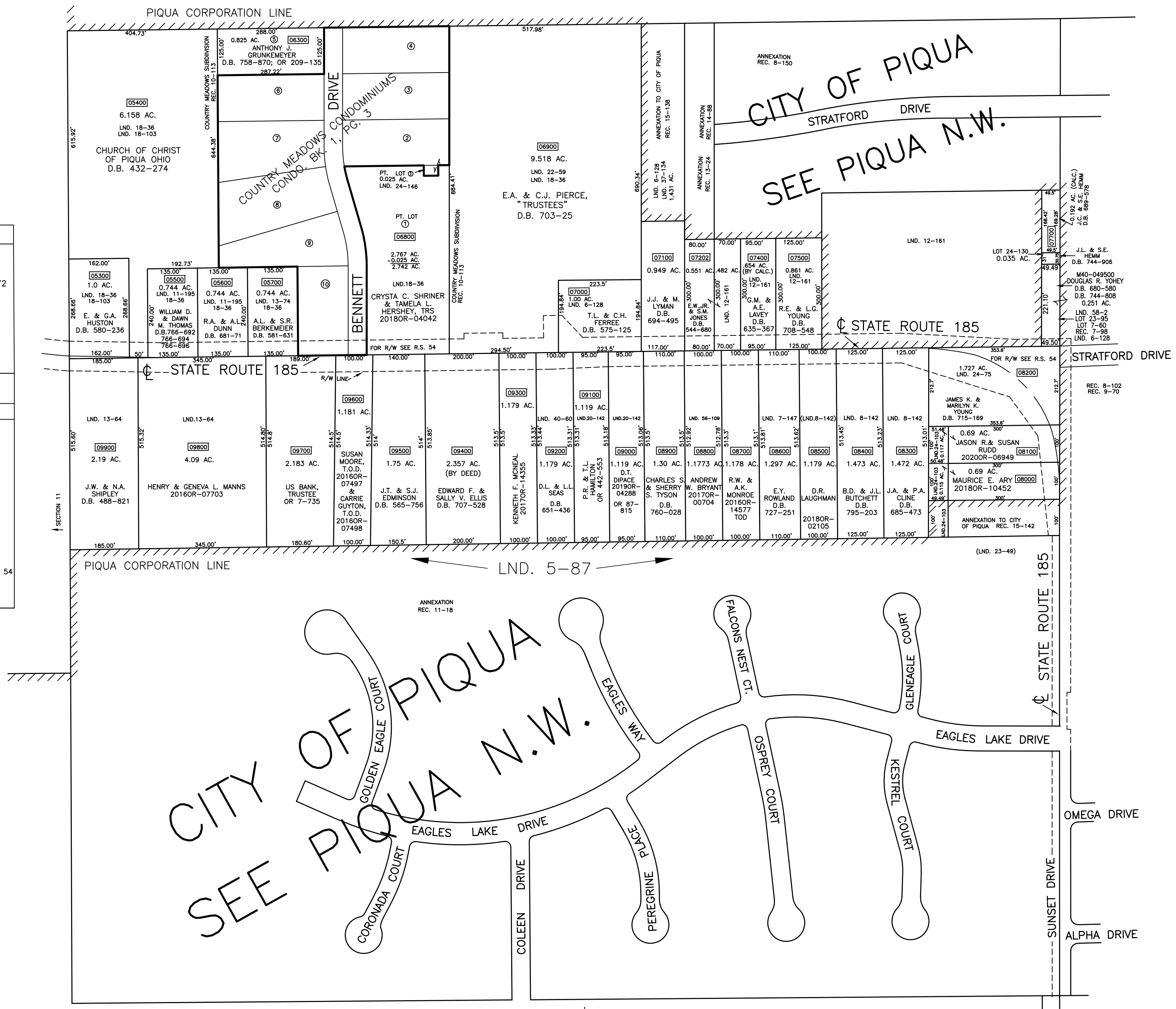
SOUTHWEST QUARTER
SECTION 12 TOWN 8 RANGE 5

SMDA NUMBER
M40-WA008A-_____

PLAT 8A



ABBREVIATION LEGEND		
2014OR-07759 = RECORDER'S DOCUMENT NUMBER OR 61-208 = OFFICIAL RECORD 61 PAGE 208		
D.B. 613-172 = DEED BOOK 613, PAGE 172		
REC. 15-72 = RECORDER'S PLAT BOOK 15, PAGE 72		
LND. 33-15 = LAND SURVEY VOLUME 33, PAGE 15		
LOT. 19-12 = LOT SURVEY VOLUME 19, PAGE 12		
R.R. 8-29 = ROAD RECORD VOLUME 8, PAGE 29		
R/W = RIGHT OF WAY		
C = CENTERLINE		
AC. = ACRES		
TWP. = TOWNSHIP		
② = LOT CREATED BY RECORDER'S PLAT TRACT		
SURVEY INDEX		
SOUTHWEST QUARTER		
LND. 3-231 LND. 5-87 LND. 6-128 LND. 7-147 LND. 8-142 LND. 8-159 LND. 11-195 LND. 12-161 LND. 13-64 LND. 13-74 LND. 15-82 LND. 18-36 LND. 18-103 LND. 20-142 LND. 22-59 LND. 23-49 LND. 24-75 LND. 24-103 LND. 24-146 LND. 37-134 LND. 40-60	LND. 56-109 LND. 58-2	LOT 7-60 LOT 23-95 LOT 24-130 REC. 7-98 REC. 8-102 REC. 8-150 REC. 9-70 REC. 10-113 REC. 11-18 REC. 13-24 REC. 15-138 REC. 15-142 CONDO 1-3 R/W SR 185 RS 54



PREPARED BY: MIAMI COUNTY ENGINEER'S MAP DEPARTMENT
PAUL P. HUELSKAMP, COUNTY ENGINEER
DATE: AUGUST, 1991
REVISED: June 2, 2020 CSHOUP

SECTION 13