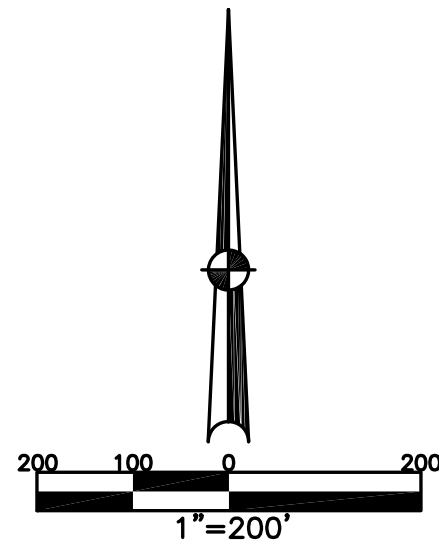


WASHINGTON TWP.
MIAMI COUNTY, OHIO

SOUTHEAST QUARTER
SECTION 11 TOWN 8 RANGE 5

PARCEL NUMBER
M40-_____

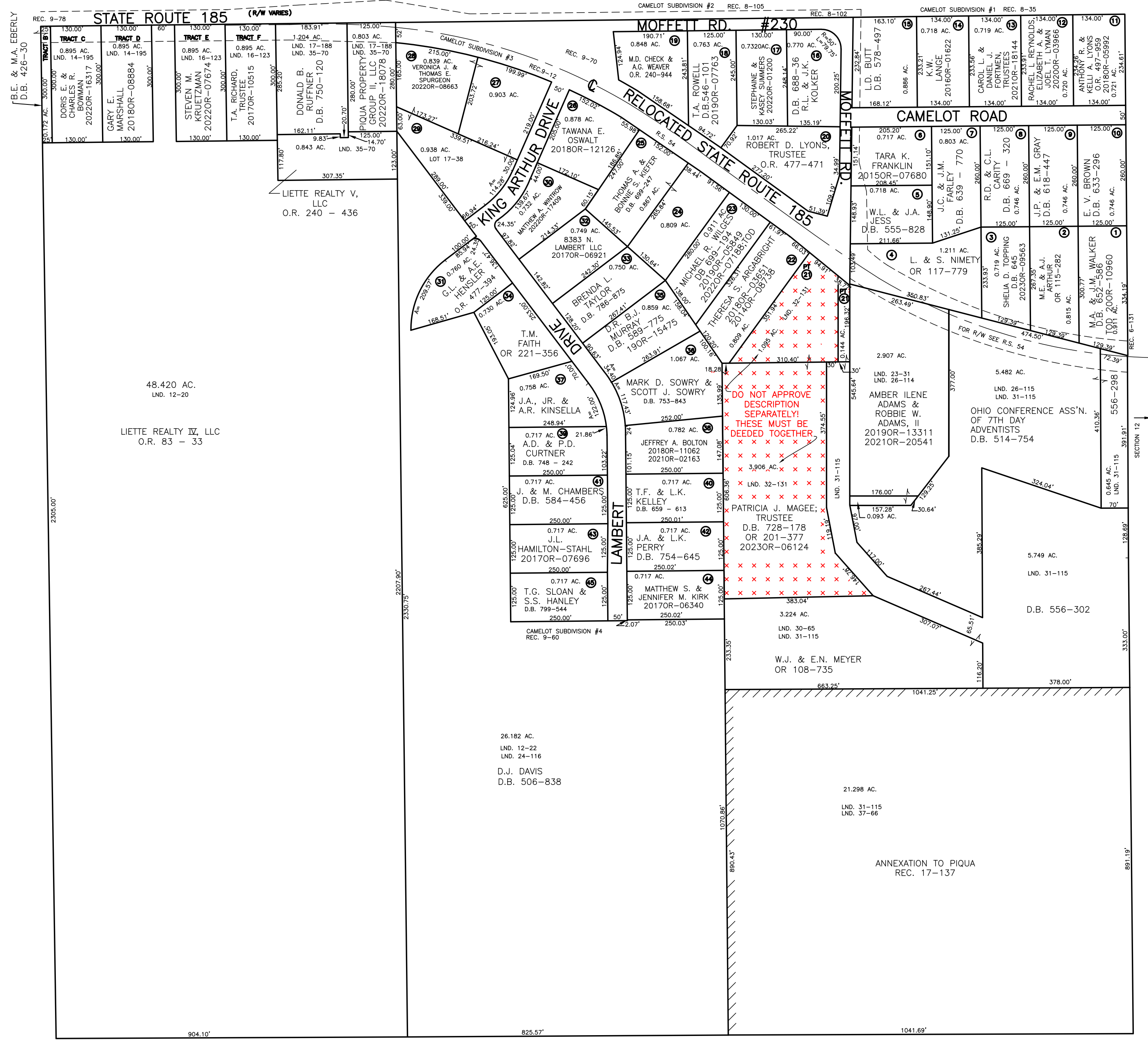
PLAT 7A



ABBREVIATION LEGEND		
20140R-07759	=	RECORDER'S DOCUMENT NUMBER
OR 406-509	=	OFFICIAL RECORD 406 PAGE 509
D.B. 677-326	=	DEED BOOK 677, PAGE 326
REC. 18-87	=	RECORDER'S PLAT BOOK 18, PAGE 87
LND. 56-145	=	LAND SURVEY VOLUME 56, PAGE 145
LOT 24-200	=	LOT SURVEY VOLUME 24, PAGE 200
R.R. 8-18	=	ROAD RECORD VOLUME 8, PAGE 18
R/W	=	RIGHT OF WAY
CL	=	CENTERLINE
AC.	=	ACRES
TWP.	=	TOWNSHIP
TR.	=	TRACT
IL	=	INLOT

LINE LEGEND		
	=	Blow-up Boundary
	=	Property Line
	=	Lot Split Line
	=	Section Line
	=	Centerline
	=	Right-of-Way Line
	=	Corporation Line

SURVEY INDEX		
LND. 12-20	LOT 17-38	REC. 6-131
LND. 12-22		REC. 8-35
LND. 14-195		REC. 8-102
LND. 16-123		REC. 8-105
LND. 17-188		REC. 9-12
LND. 23-31		REC. 9-60
LND. 24-116		REC. 9-70
LND. 26-114		REC. 9-78
LND. 26-115		
LND. 30-65		
LND. 31-115		
LND. 32-131		
LND. 35-70		
LND. 37-66		



PREPARED BY: MIAMI COUNTY ENGINEER'S MAP DEPARTMENT
PAUL P. HUELSKAMP, P.E., P.S., COUNTY ENGINEER
DATE: 6/91
REVISED: September 1, 2023 DJACQUEMIN