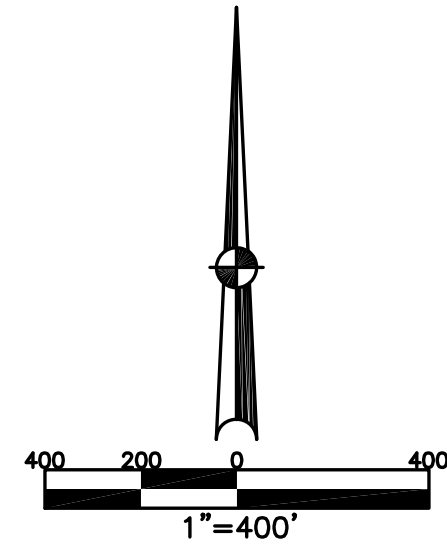


WASHINGTON TWP.
MIAMI COUNTY, OHIO

SECTION 11 TOWN 8 RANGE 5

PARCEL NUMBER
M40-

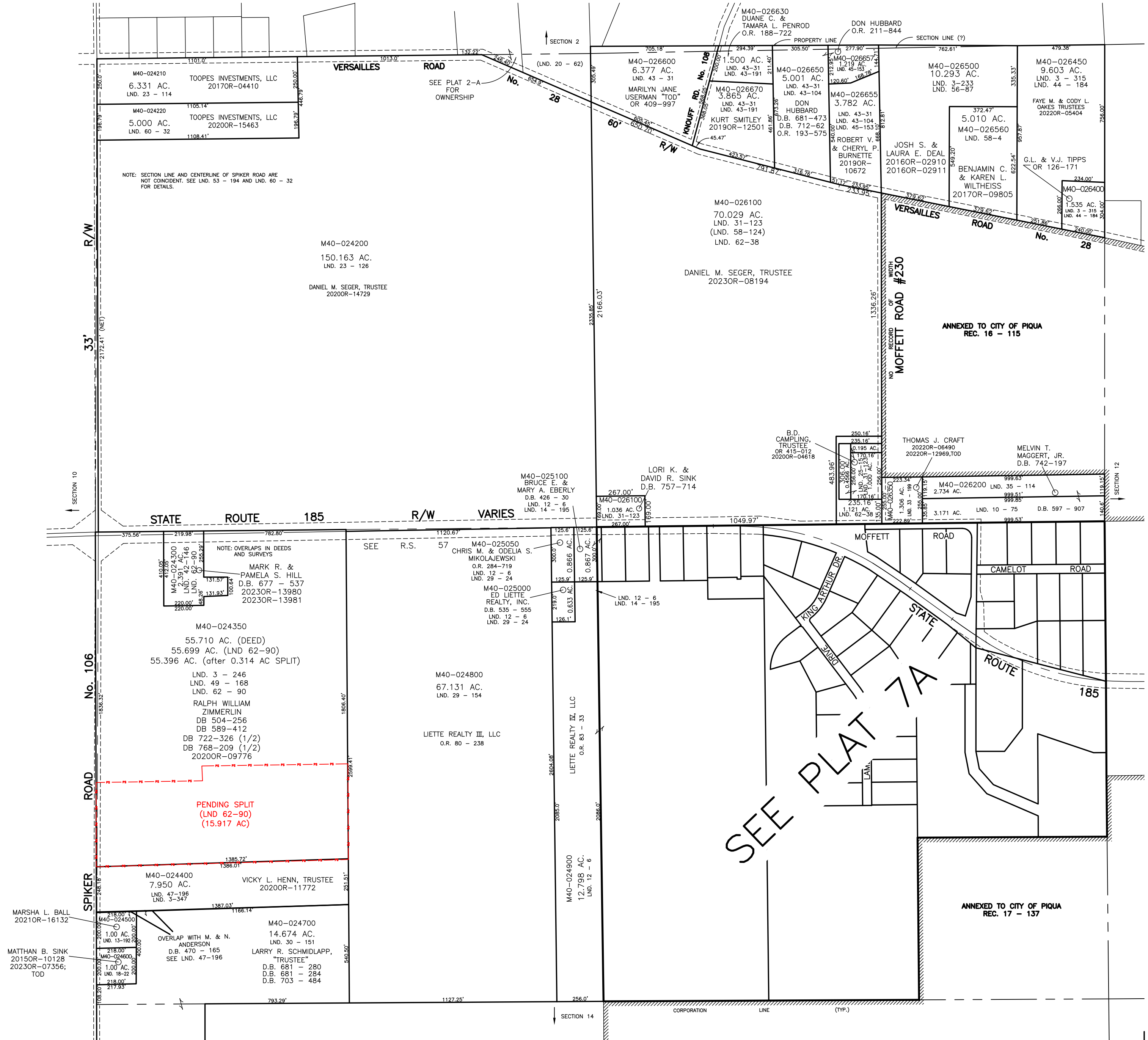
PLAT 7



ABBREVIATION LEGEND		
2014OR-07759 =	RECORDER'S DOCUMENT NUMBER	
OR 257-619 =	OFFICIAL RECORD 257 PAGE 619	
D.B. 613-172 =	DEED BOOK 613, PAGE 172	
REC. 15-72 =	RECORDER'S PLAT BOOK 15, PAGE 72	
LND. 33-15 =	LAND SURVEY VOLUME 33, PAGE 15	
LOT 19-12 =	LOT SURVEY VOLUME 19, PAGE 12	
R.R. 8-29 =	ROAD RECORD VOLUME 8, PAGE 29	
R/W	RIGHT OF WAY	
C	CENTERLINE	
AC.	ACRES	
TWP.	TOWNSHIP	
TR.	TRACT	
②	LOT CREATED BY RECORDER'S PLAT	

LINE LEGEND		
	Blow-up Boundary	
	Property Line	
	Lot Split Line	
	Centerline	
	Section Line	
	Right-of-Way Line	
	Corporation Line	

SURVEY INDEX		
NORTHWEST QUARTER		
LND. 20 - 62		
LND. 23 - 114		
LND. 33 - 58		
LND. 49 - 59		
LND. 50 - 164		
LND. 60 - 32		
NORTHEAST QUARTER		
LND. 3-233	LND. 43-104	REC. 8-102
LND. 3-315	LND. 43-191	REC. 16-115
LND. 10-75	LND. 44-184	
LND. 25-1	LND. 45-153	
LND. 25-160	LND. 56-87	
LND. 31-123	LND. 58-4	
LND. 33-199	LND. 58-124	
LND. 35-114	LND. 62-38	
LND. 43-31		
SOUTHWEST QUARTER		
LND. 3-246	LND. 30-151	
LND. 3-347	LND. 42-146	
LND. 12-6	LND. 47-196	
LND. 13-192	LND. 49-168	
LND. 14-195	LND. 62-90	
LND. 16-22		
LND. 26-115		
LND. 29-24		
LND. 29-154		
SOUTHEAST QUARTER		
LND. 12-20	LND. 30-65	REC. 6-131
LND. 12-22	LND. 31-115	REC. 8-35
LND. 14-195	LND. 32-131	REC. 8-102
LND. 16-123	LND. 35-70	REC. 8-105
LND. 17-36	LND. 37-66	REC. 9-12
LND. 17-188		REC. 9-60
LND. 23-31		REC. 9-70
LND. 24-116		REC. 9-78
LND. 26-114		REC. 17-137



PREPARED BY: MIAMI COUNTY ENGINEER'S MAP DEPARTMENT
PAUL P. HUELSKAMP, COUNTY ENGINEER
DATE: JUNE 1991
REVISED: December 22, 2023 MISTORMS