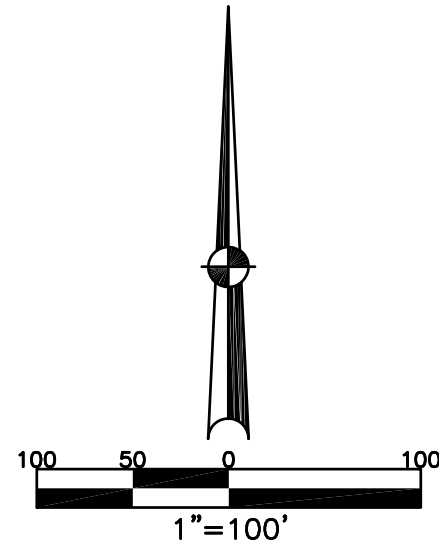


# CITY OF PIQUA MIAMI COUNTY, OHIO

PARCEL NUMBER  
N44-----

PLAT NE 102



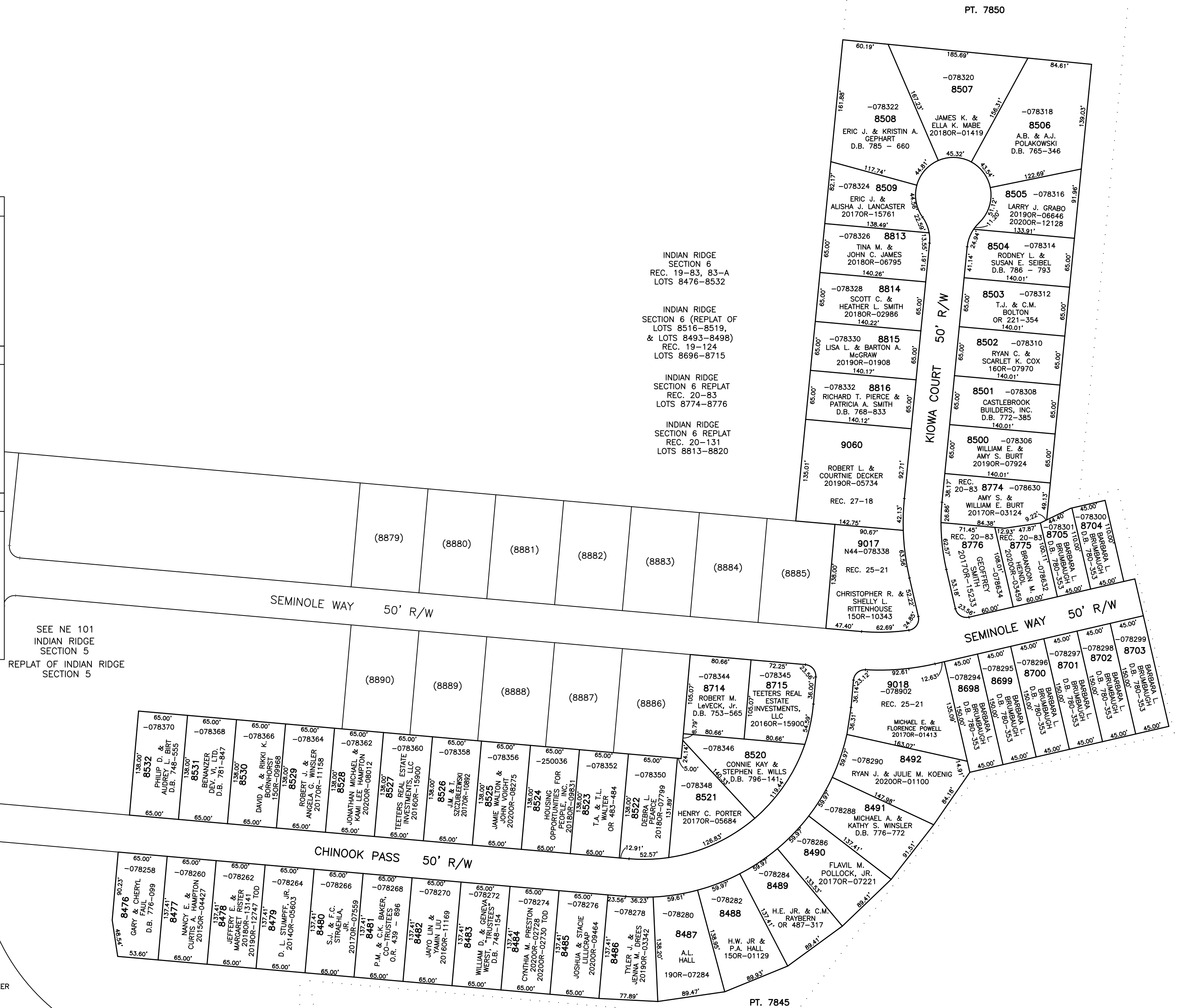
ABBREVIATION LEGEND		
2014OR-07759	=	RECORDER'S DOCUMENT NUMBER
OR 55-623	=	OFFICIAL RECORD 55 PAGE 623
D.B. 613-172	=	DEED BOOK 613, PAGE 172
REC. 15-72	=	RECORDER'S PLAT BOOK 15, PAGE 72
LND. 33-15	=	LAND SURVEY VOLUME 33, PAGE 15
LOT 19-12	=	LOT SURVEY VOLUME 19, PAGE 12
R.R. 8-29	=	ROAD RECORD VOLUME 8, PAGE 29
R/W	=	RIGHT OF WAY
CL	=	CENTERLINE
AC.	=	ACRES
TWP.	=	TOWNSHIP
TR.	=	TRACT
IL	=	INLOT

LINE LEGEND	
	Blow-up Boundary
	Property Line
	Lot Split Line
	Section Line
	Centerline
	Right-of-Way Line
	Corporation Line

SURVEY INDEX		
INDIAN RIDGE SECTION 6 REC. 19-83, 83-A LOTS 8476-8532	ANNEXATION REC. 15-113	LOT 23-156 LND. 18-74 REC. 25-21
INDIAN RIDGE SECTION 6 REPLAT (LOTS 8516-8519, & LOTS 8493-8498) REC. 19-124 LOTS 8696-8715	INDIAN RIDGE SECTION 6 REPLAT REC. 20-83 LOTS 8774-8776	INDIAN RIDGE SECTION 6 REPLAT REC. 20-131 LOTS 8813-8820



PREPARED BY: MIAMI COUNTY ENGINEER'S MAP DEPARTMENT  
PAUL P. HUELSKAMP, P.E., P.S., COUNTY ENGINEER  
DATE: DECEMBER 26, 2001  
REVISED: August 28, 2020 SSHOT

PT. 7845