

SECTION 25, NE QUARTER
TOWN 1
RANGE 12

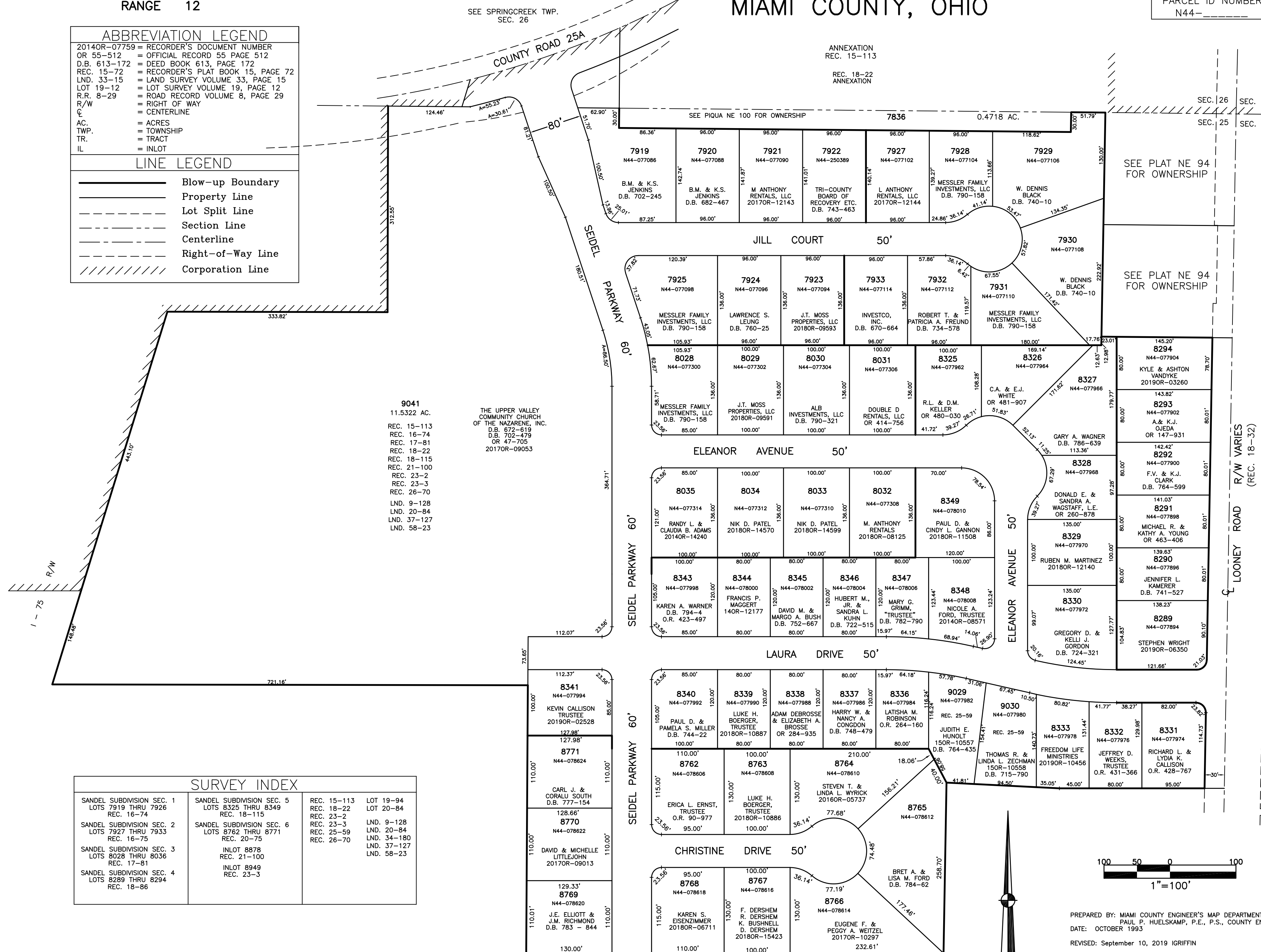
CITY OF PIQUA
MIAMI COUNTY, OHIO

PLAT NE 98

PARCEL ID NUMBER
N44-_____

ABBREVIATION LEGEND	
20140R-07759	= RECORDER'S DOCUMENT NUMBER
OR 55-512	= OFFICIAL RECORD 55 PAGE 512
D.B. 613-172	= DEED BOOK 613, PAGE 172
REC. 15-72	= RECORDER'S PLAT BOOK 15, PAGE 72
LND. 33-15	= LAND SURVEY VOLUME 33, PAGE 15
LOT 19-12	= LOT SURVEY VOLUME 19, PAGE 12
R.R. 8-29	= ROAD RECORD VOLUME 8, PAGE 29
R/W	= RIGHT OF WAY
C	= CENTERLINE
AC.	= ACRES
TWP.	= TOWNSHIP
TR.	= TRACT
IL	= INLOT

LINE LEGEND	
	Blow-up Boundary
	Property Line
	Lot Split Line
	Section Line
	Centerline
	Right-of-Way Line
	Corporation Line



SURVEY INDEX			
SANDEL SUBDIVISION SEC. 1 LOTS 7919 THRU 7926 REC. 16-74	SANDEL SUBDIVISION SEC. 5 LOTS 8325 THRU 8349 REC. 18-115	REC. 15-113 REC. 18-22 REC. 23-2 REC. 23-3 REC. 25-59 REC. 26-70	LOT 19-94 LOT 20-84 LND. 9-128 LND. 20-84 LND. 34-180 LND. 37-127 LND. 58-23
SANDEL SUBDIVISION SEC. 2 LOTS 7927 THRU 7933 REC. 16-75	SANDEL SUBDIVISION SEC. 6 LOTS 8762 THRU 8771 REC. 20-75		
SANDEL SUBDIVISION SEC. 3 LOTS 8028 THRU 8036 REC. 17-81	INLOT 8878 REC. 21-100		
SANDEL SUBDIVISION SEC. 4 LOTS 8289 THRU 8294 REC. 18-86	INLOT 8949 REC. 23-3		

PREPARED BY: MIAMI COUNTY ENGINEER'S MAP DEPARTMENT
DATE: OCTOBER 1993
REVISED: September 10, 2019 IGRIFIN