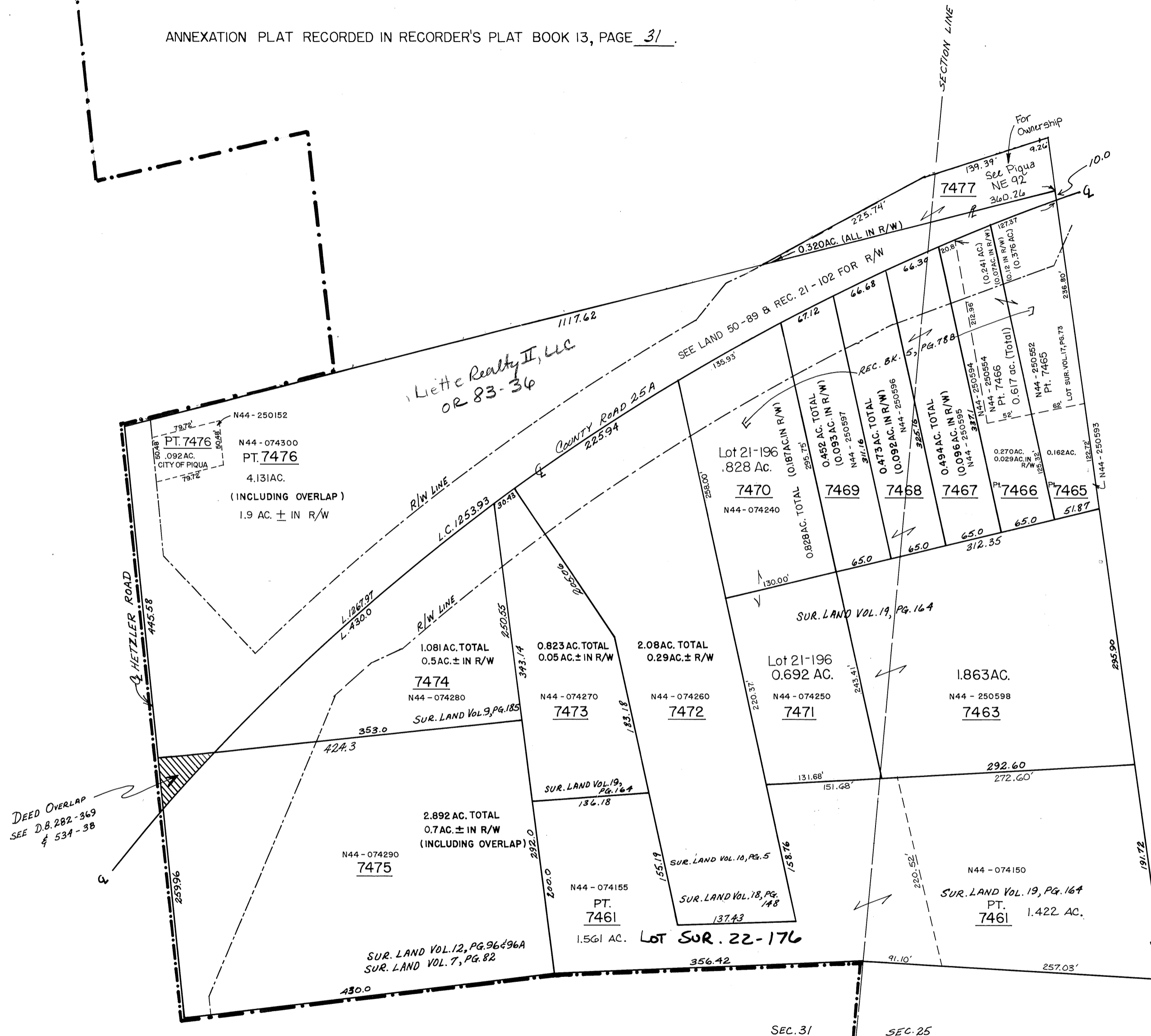


PIQUA N.E. PLAT 86

ANNEXATION PLAT RECORDED IN RECORDER'S PLAT BOOK 13, PAGE 31



DEED OVERLAP
SEE D.B. 282-369
& 534-38



LOT	NAME	D. B.	LOT	NAME	D. B.
7477	PAUL SHERRY	639-293	7469	MINISTRY PARTNERS INVESTMENT	170K-06296
7476	LOT NOW SPLIT - SEE LOT ABOVE		7468	"	"
7475	Actionworks, LLC	20180R-11104	7467	"	"
7474	"		7466	PT. (0.270 AC.)	"
7473	ED. LIETTE REALTY IN	583-815	7465	PT. (0.241 AC.)	"
7472	"		7464	PT. (0.376 AC.)	"
7471	Brandon Schultz	740-324	7463	PT. (0.162 AC.)	"
7470	"	"	7461	PT. (1.561 AC.) ED. LIETTE REALTY	170K-06296
				PT. (1.422 AC.) KN + KU Properties LLC	OR 211-5376

----- DENOTES CORPORATION LINE
 -.-.-.-.- RIGHT OF WAY - HIGHWAY