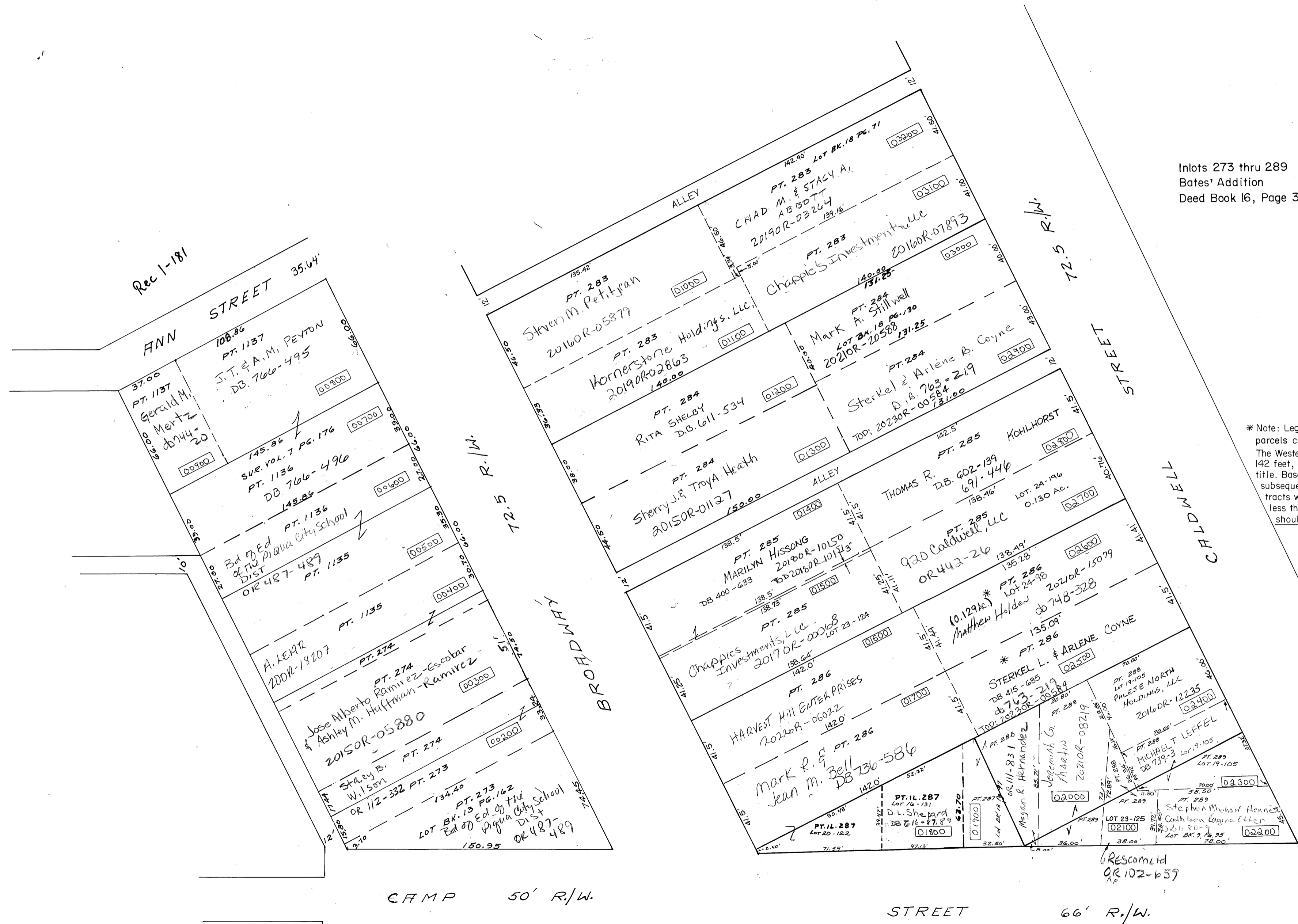


SMDA NUMBER  
N44-NE072\_ - - - - -

Inlots 273 thru 289  
Bates' Addition  
Deed Book 16, Page 358

\* Note: Legal descriptions for these parcels call for a depth of 142.5 feet. The Western tracts call for a depth of 142 feet, and have senior rights of title. Based on the original plat and subsequent surveys, the Eastern tracts would have a net depth of less than 138 feet. Descriptions should not be approved.



82.50