

PIQUA Corporation

N.E. SECTION

PLAT NO. 32
SCALE 1-INCH = 30 FEET.

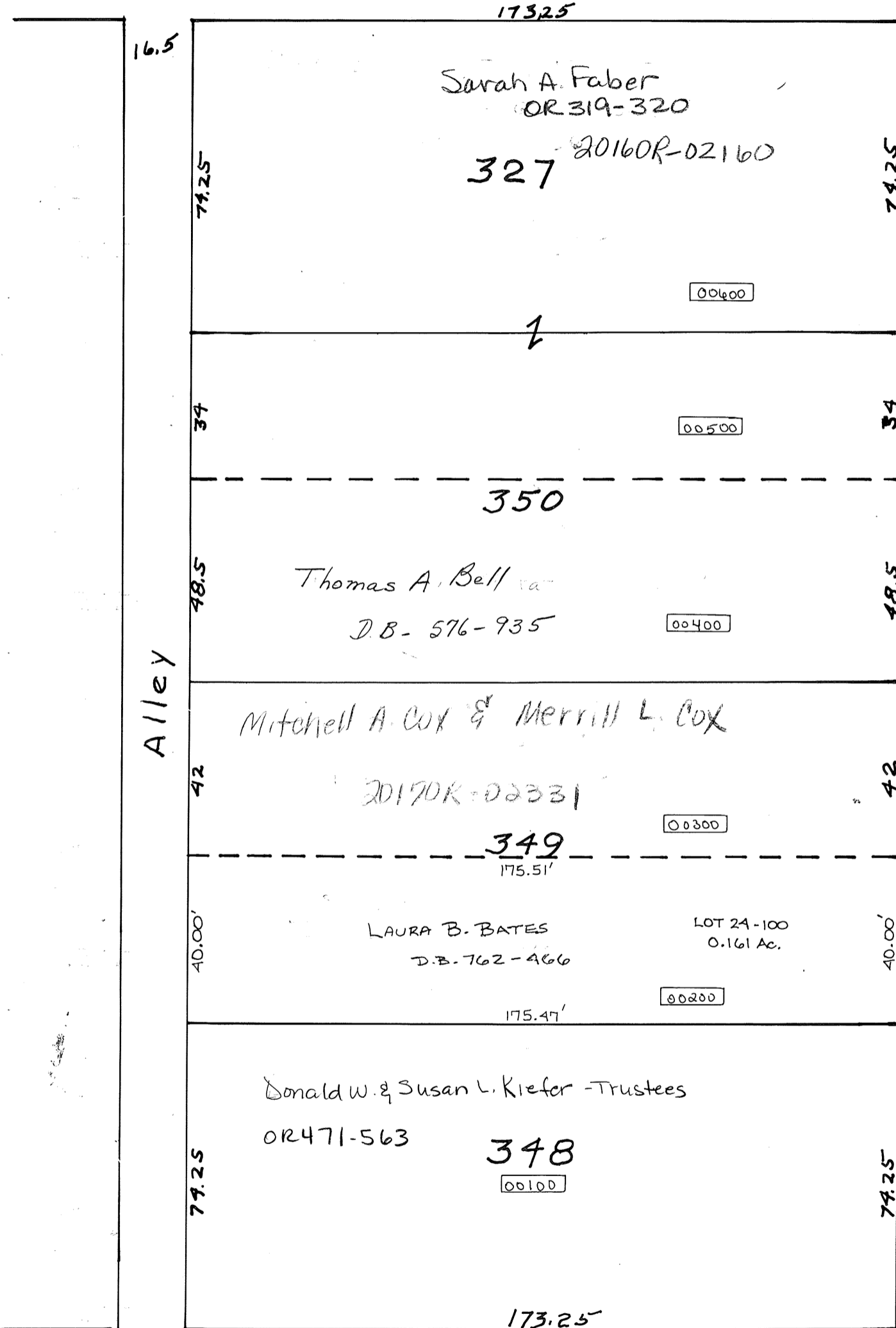
SMDA NUMBER
N44-NE032

NORTH

66' R/W

STREET

Deed Rec. Vol. 17 - Pg. 438



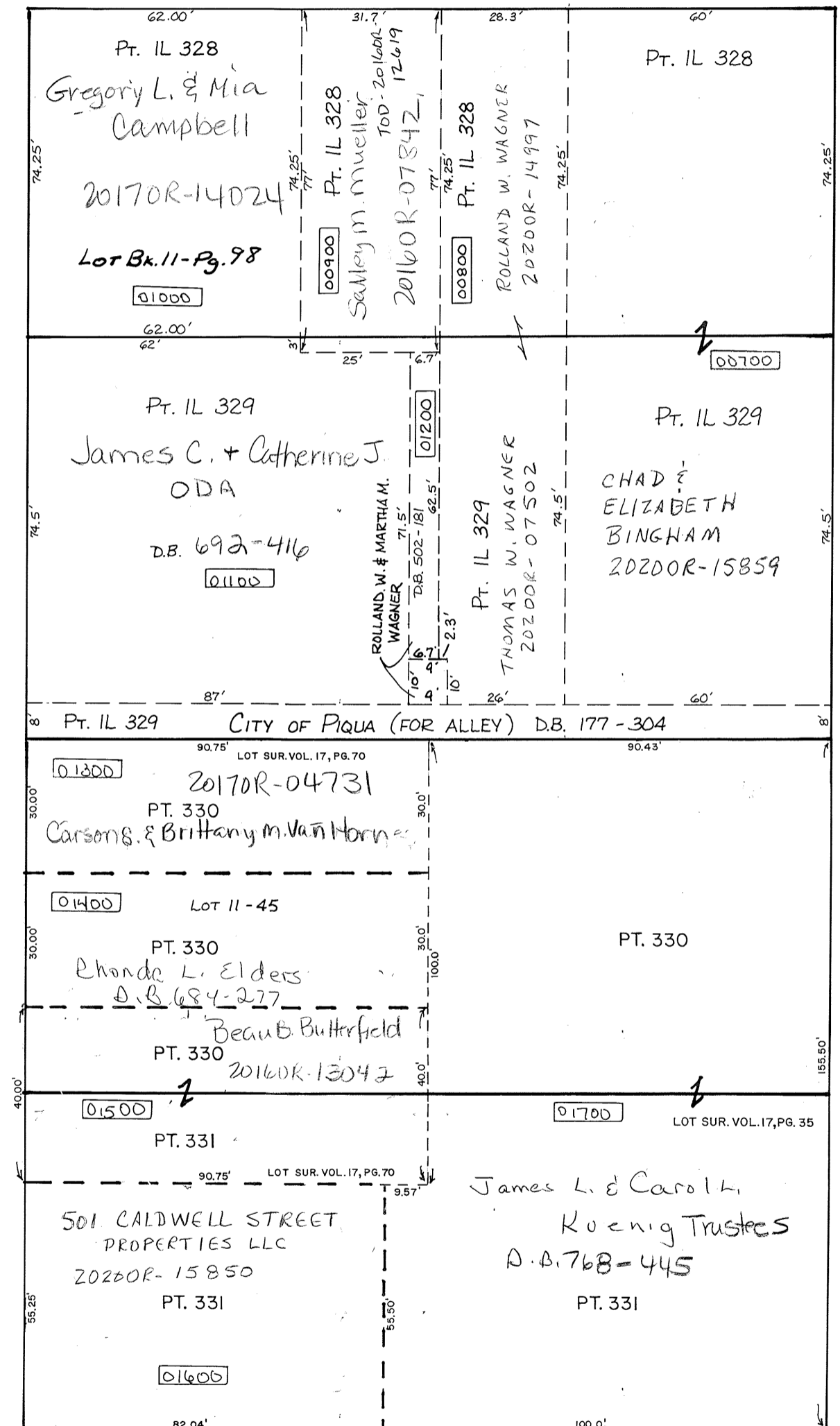
STREET

66' R/W

CALDWELL

GREENE

66' R/W



Alley

NOTE: ORIGINAL N-S LOT DIMENSIONS FOR LOTS 329 & 330
DO NOT MATCH SURVEYS. 4 POLES 22 1/2 LINKS = 80.58'

STREET