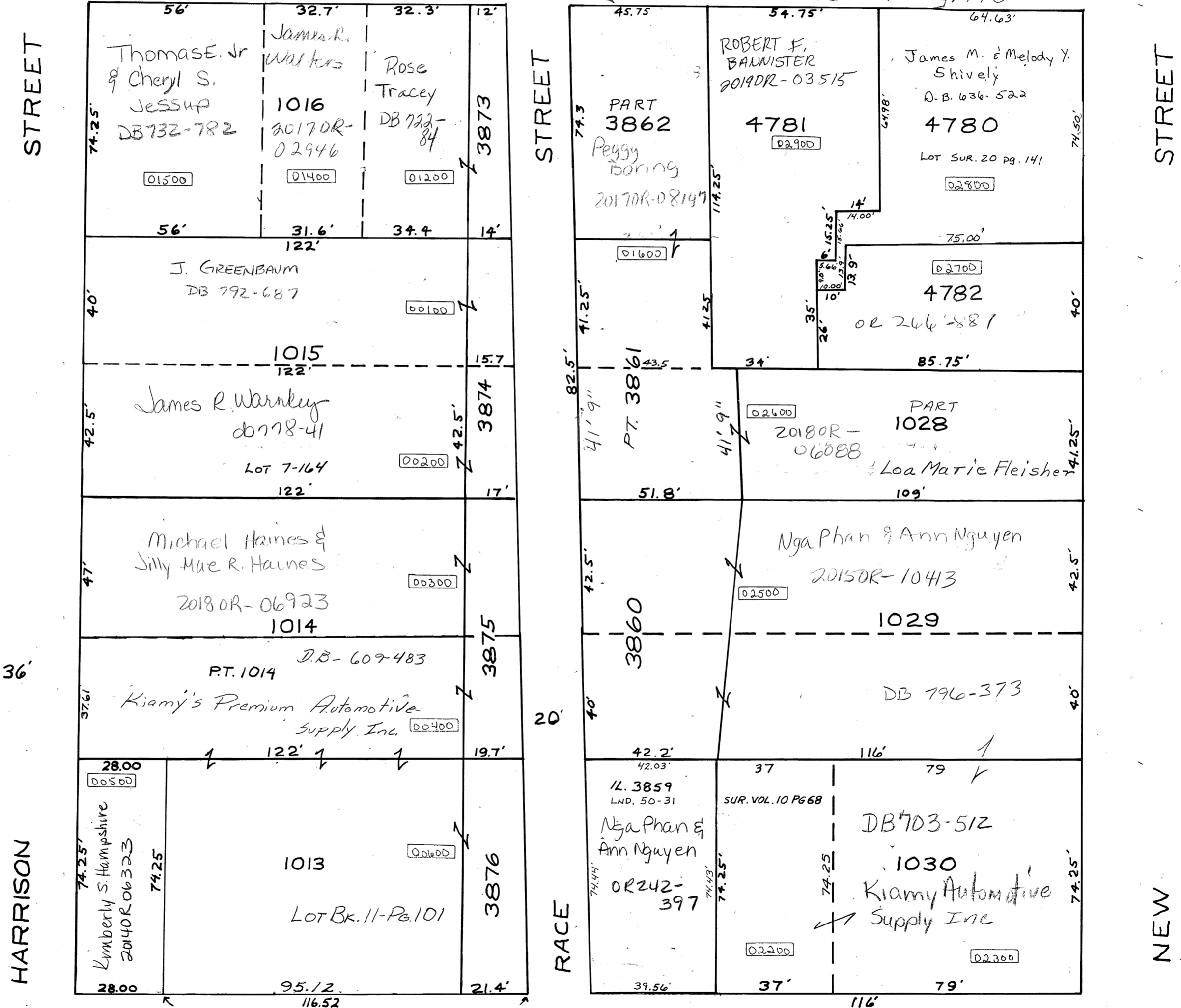


SMDA NUMBER  
N44-NE006- \_\_\_\_\_

GREENE STREET

NOTE: ACCORDING TO ORIG. PLAT OF IL. 3862 (REC. 1-144) & EARLY DEEDS THE FRONTAGE WOULD BE 43.5' (11'). A PLAT LATER RECORDED (REC. 3-103) WHICH CLAIMS TO CORRECT DIMENSIONS, SHOWS FRONTAGE TO BE AS SHOWN

Rec. Bk. 1-Pg. 140



REC. 23-46

ASH STREET

RACE STREET