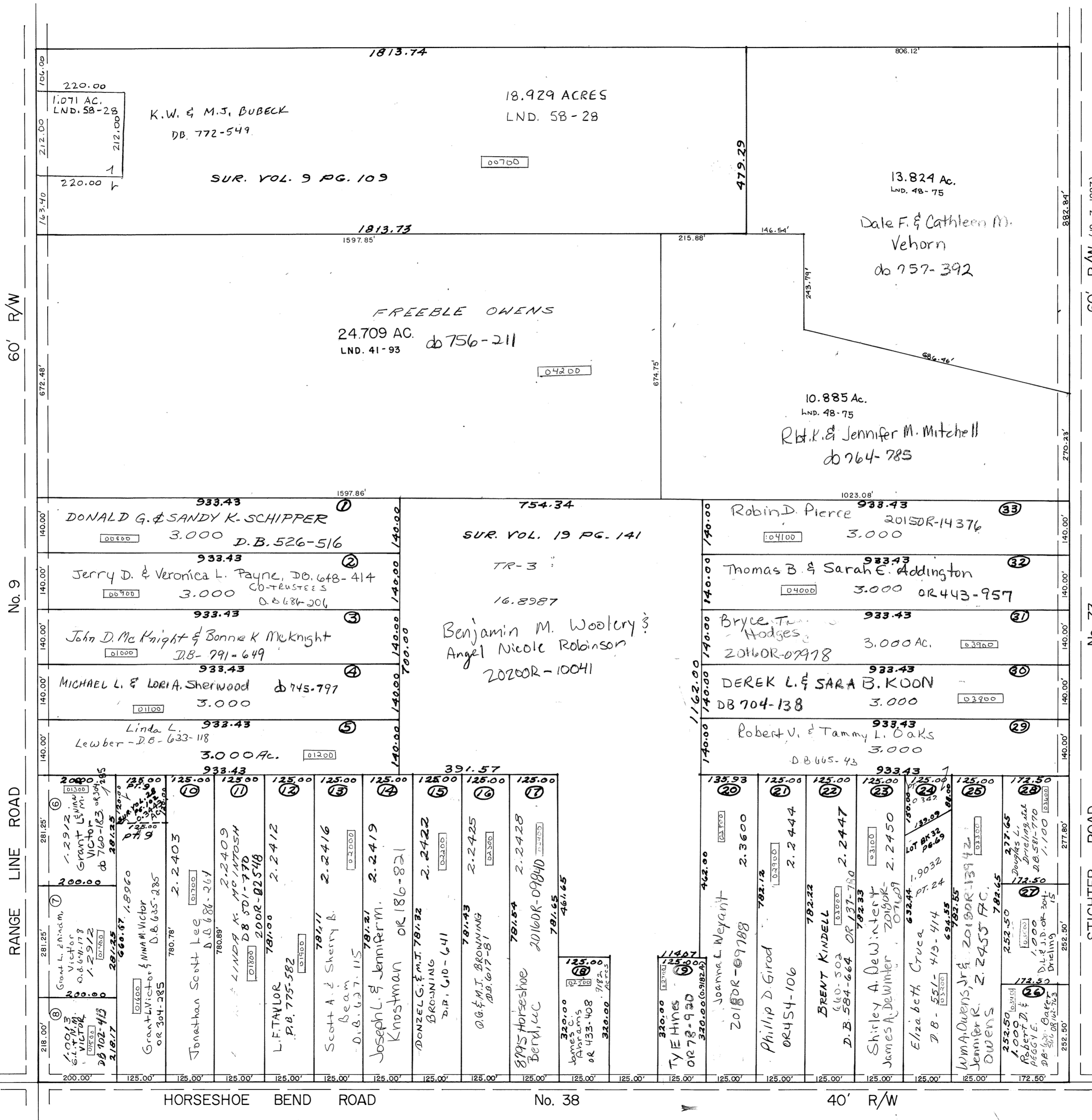


CHAR - MAR SUB., SECTION 1
LOTS 1 THRU 18
REC. BOOK 10, PAGE 122



60' R/W (12-7-1887)
(SEE COMMISSIONERS' JOURNAL 8, PAGE 437, FOR RIGHT-OF-WAY WIDTH REVISED ACCORDING TO RESEARCH BY MIAMI COUNTY MAP DEPARTMENT ON 2-27-2003.)

STICHTER ROAD
CHAR - MAR SUB., SECTION 2
LOTS 19 THRU 33
REC. BOOK 10, PG. 123

SMCA NUMBER
I 30-NT036A- _____