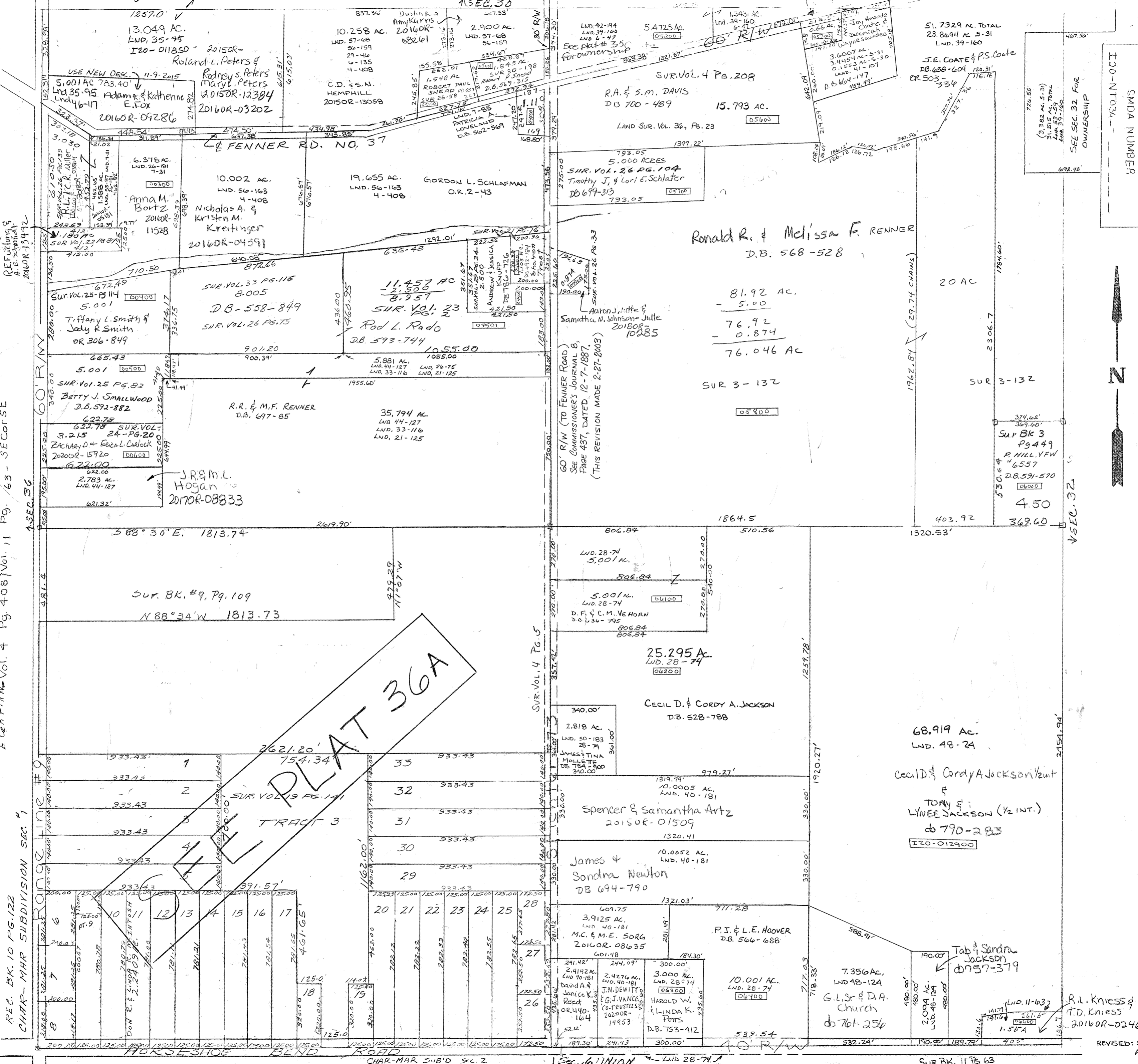


LND. 48-124 S. PT. SE QTR.  
LND. 55-87 NW PT. NW QTR.  
LND. 42-194 NW PT. NE QTR.  
LND. 46-117 NW PT. NW QTR.  
LND. 48-24 E. PT. SE QTR.

SURVOL. 5  
Pg. 227 Vol. 6 Pg. 132 Vol. 6 Pg. 397 Vol. 7 Pg. 449 Vol. 9 Pg. 208 Vol. 10 Pg. 408 Vol. 11  
NE QTR  
NW QTR  
SE QTR  
SW QTR  
E. PT. NW QTR  
W. PT. NW QTR  
E. PT. SE QTR  
W. PT. SE QTR  
E. PT. SW QTR  
W. PT. SW QTR  
E. PT. SW QTR  
W. PT. SW QTR



SMDA NUMBER  
I-20-NT-034  
SEE SEC. 32 FOR OWNERSHIP



REC. BK. 10 PG. 122  
CHAR - MAR SUBDIVISION SEC. 7

HORSESHOE BEND ROAD  
CHAR - MAR SUB'D SEC. 2  
REC. 10 - 123

Sec. 16 UNION  
LND 28-74  
LND. 40-181

SUR BK. 11 PG. 63

REVISED: 5/9/16  
AM