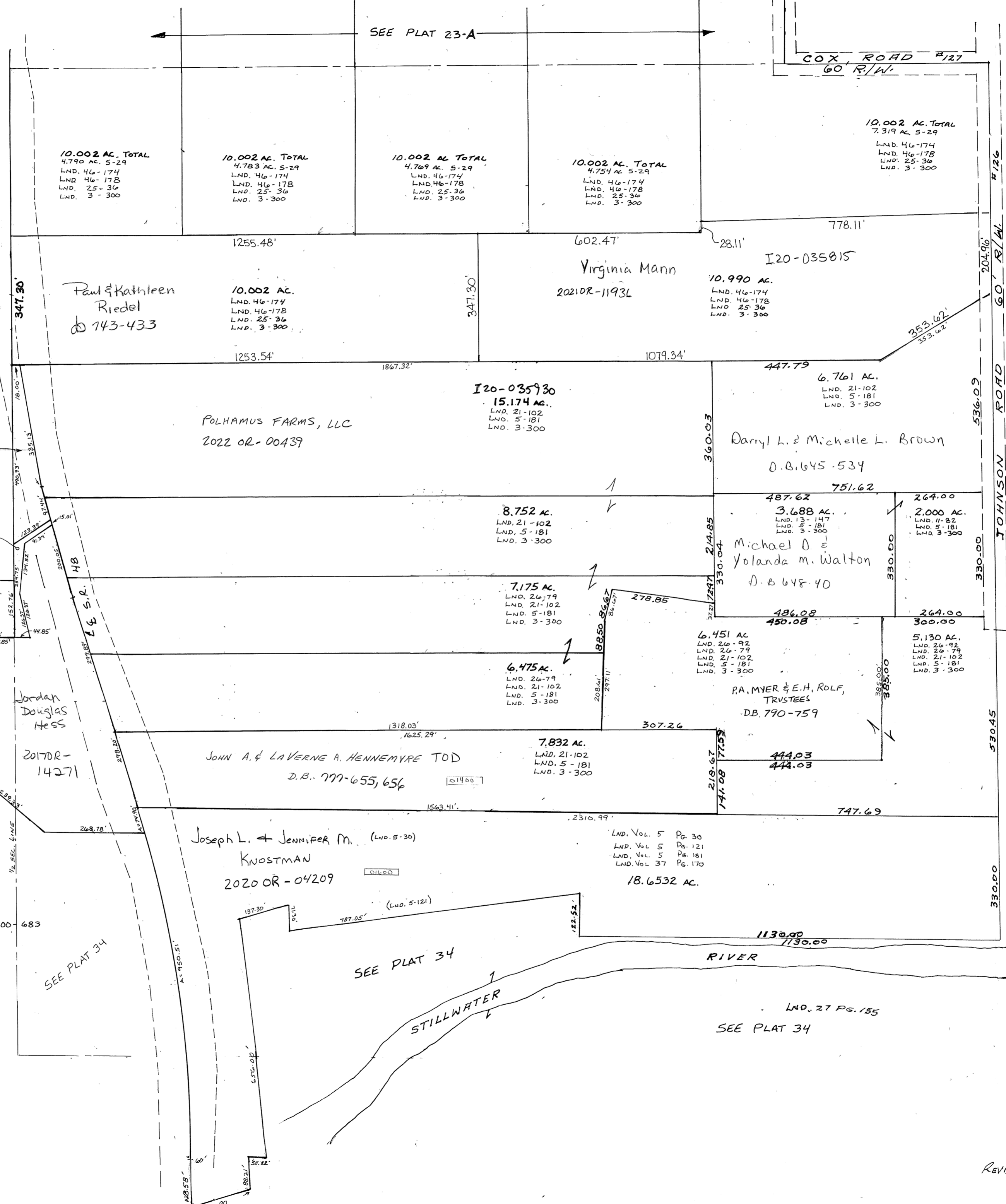


PARCEL-NUMBER
120-

NOTE: FOR VACATION OF JOYLAND DRIVE, SEE THE FOLLOWING:
ROAD REC. 9-25
LAND SUR. 54-75
DIRECTOR'S JOURNAL ENTRY OR 300-683
RELEASE OF EASEMENTS OR 300-696 OR 300-701 OR 300-706 OR 300-710



10.002 AC. TOTAL
4.790 AC. 5-29
LND. 46-174
LND. 46-178
LND. 25-36
LND. 3-300

10.002 AC. TOTAL
4.783 AC. 5-29
LND. 46-174
LND. 46-178
LND. 25-36
LND. 3-300

10.002 AC. TOTAL
4.769 AC. 5-29
LND. 46-174
LND. 46-178
LND. 25-36
LND. 3-300

10.002 AC. TOTAL
4.754 AC. 5-29
LND. 46-174
LND. 46-178
LND. 25-36
LND. 3-300

10.002 AC. TOTAL
7.319 AC. 5-29
LND. 46-174
LND. 46-178
LND. 25-36
LND. 3-300

Paul & Kathleen Riedel
D.B. 743-433

10.002 AC.
LND. 46-174
LND. 46-178
LND. 25-36
LND. 3-300

Virginia Mann
2021OR-1193L

10.990 AC.
LND. 46-174
LND. 46-178
LND. 25-36
LND. 3-300

POLHAMUS FARMS, LLC
2022 OR-00439

I20-035930
15.174 AC.
LND. 21-102
LND. 5-181
LND. 3-300

Darryl L. & Michelle L. Brown
D.B. 645-534

6.761 AC.
LND. 21-102
LND. 5-181
LND. 3-300

8.752 AC.
LND. 21-102
LND. 5-181
LND. 3-300

Michael O & Yolanda M. Walton
D.B. 648-40

3.688 AC.
LND. 13-147
LND. 5-181
LND. 3-300

2.000 AC.
LND. 11-82
LND. 5-181
LND. 3-300

5.154 AC.
LND. 53-169
LND. 52-78
LND. 52-78
LND. 51-143
LND. 29-66
LND. 21-144
LND. 21-102
LND. 26-79

Jordan Douglas Hess
2017OR-14271

7.175 AC.
LND. 26-79
LND. 21-102
LND. 5-181
LND. 3-300

6.475 AC.
LND. 26-79
LND. 21-102
LND. 5-181
LND. 3-300

P.A. MYER & E.H. ROLF, TRUSTEES
D.B. 790-759

5.130 AC.
LND. 26-92
LND. 26-79
LND. 21-102
LND. 5-181
LND. 3-300

JOHN A. & LAVERNE A. HENNEMYRE TOD
D.B. 777-655, 656

7.832 AC.
LND. 21-102
LND. 5-181
LND. 3-300

Joseph L. & Jennifer M. Kinostman
2020 OR-04209

LND. Vol. 5 Pg. 30
LND. Vol. 5 Pg. 121
LND. Vol. 5 Pg. 181
LND. Vol. 37 Pg. 170
18.6532 AC.

SEE PLAT 34

STILLWATER RIVER

RIVER

SEE PLAT 34