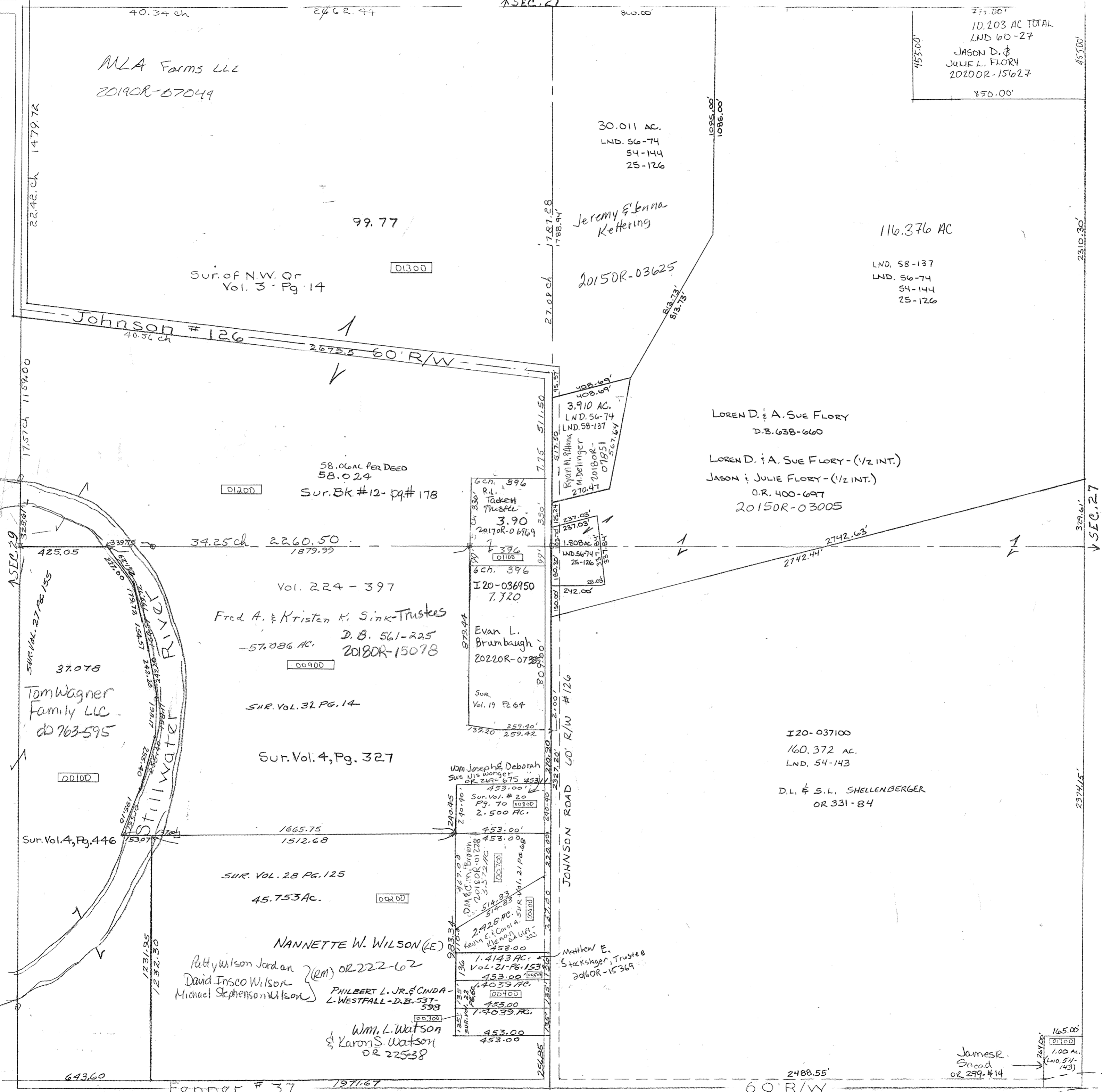


SMDA NUMBER
I30-NT033



SURVEYS
Pg. 14 - N P4 NW
Pg. 327 - N E P4 SW
Pg. 446 - W P4 SW
Pg. 1178 - S E C4 NW
Pg. - NE P4 NE QTR
LND 60 - 27



MLA Farms LLC
2019OR-67049

30.011 AC.
LND. 56-74
54-144
25-126

777.00'
10.203 AC TOTAL
LND 60-27
JASON D. &
JULIE L. FLORY
2020OR-15627
850.00'

Sur. of N.W. Qr
Vol. 3 - Pg. 14

Jeremy & Jenna
Kettering

116.376 AC

LND. 58-137
LND. 56-74
54-144
25-126

Johnson # 126
40.56 ch
2675.5 60' R/W

LOREN D. & A. SUE FLORY
D.B. 638-660

LOREN D. & A. SUE FLORY - (1/2 INT.)
JASON & JULIE FLORY - (1/2 INT.)
O.R. 400-697
2015OR-03005

58.06 AC PER DEED
58.024
Sur. BK #12 - Pg # 178

6 ch. 396
R.L. Tackett
Trustee
3.90
2017OR-06969
396
I20-036950
7.720

Fred A. & Kristen K. Sink-Trustees
D.B. 561-225
2018OR-15078
57.086 AC.

Evan L.
Brumbaugh
2022OR-07388
Sur.
Vol. 19 Pg 64

Tom Wagner
Family LLC
00763-595

Sur. Vol. 4, Pg. 327

I20-037100
160.372 AC.
LND. 54-143

D.L. & S.L. SHELLENBERGER
OR 331-84

Sur. Vol. 4, Pg. 446

SUR. VOL. 28 PG. 125
45.753 AC.

Wm Joseph & Deborah
Sue W. Wanger
OR 249-675 453
453.00
Sur. Vol. # 20
Pg. 70
2.500 AC.

NANNETTE W. WILSON (E)
Patty Wilson Jordan (RM) OR 222-62
David Insko Wilson
Michael Stephenson Wilson
PHILBERT L. JR. & CINDA
L. WESTFALL - D.B. 537-
598

Matthew E.
Stacksleger, Trustee
2016OR-15369

Wm. L. Watson
& Karon S. Watson
OR 225-38

James R.
Snead
OR 299-414

REVISED:
5/11/22
ADP