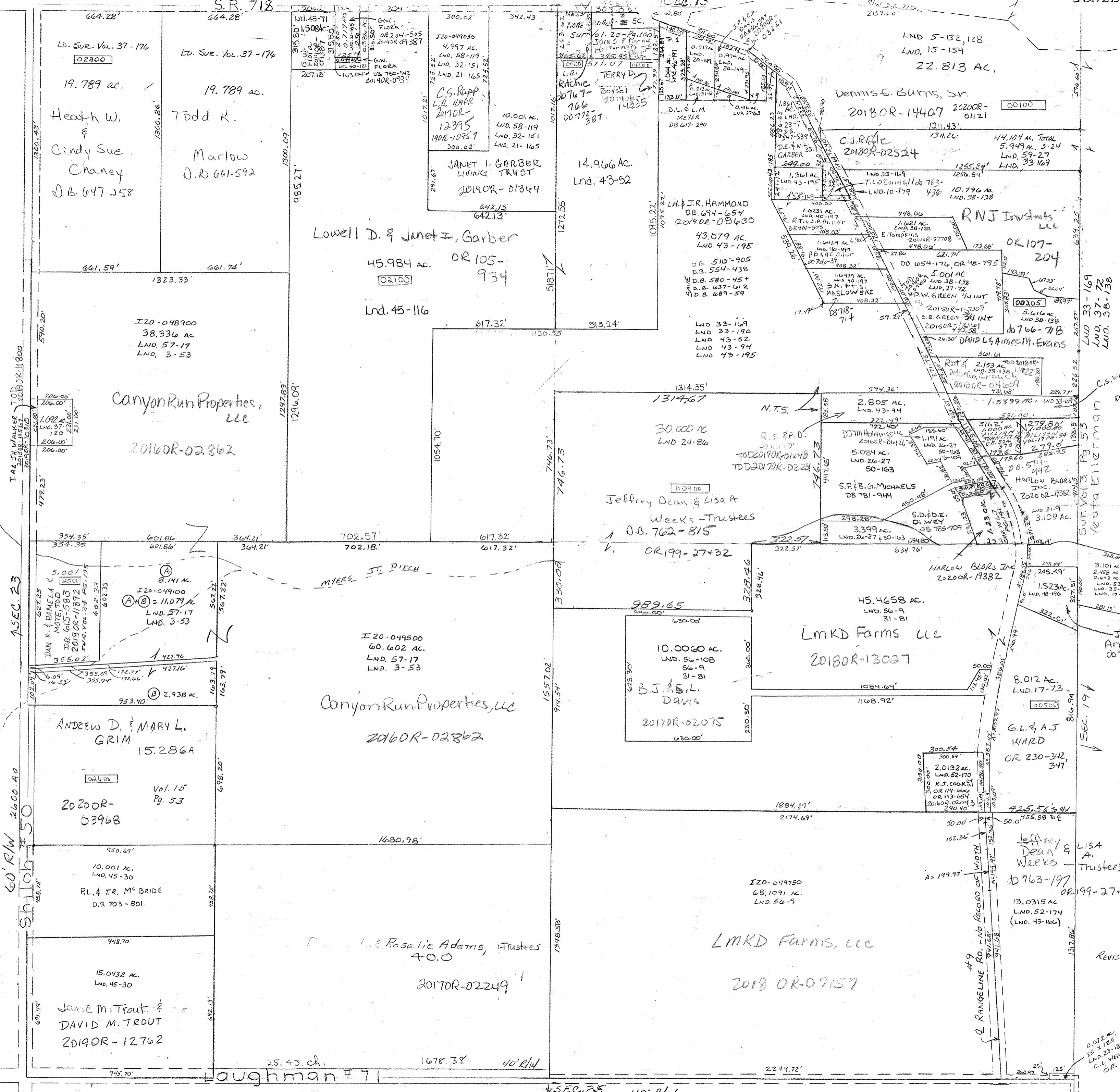


Surveys Vol 7 Pg 141-SE PT NE Lnd. 43-52 SE PT NW QTR. & SW PT. N. QTR. Lnd. 43-106 SE. Pt. SE. QTR. Lnd. 45-71 NE Pt. NW QTR. Lnd. 45-116 E. Pt. NW QTR. Lnd. 46-197 NW Pt. NE QTR. Vol 3 Pg 106 Vol 10 Pg 128 Vol 15 Pg 109 Vol 17 Pg 32

SMDA NUMBER 130-NT028



REVISED 2-28-2019 D. VENTURA

0.072 AC. 25' x 125' LND. 23-186 C.L. WEEKS, TRUSTEE OR 10-408