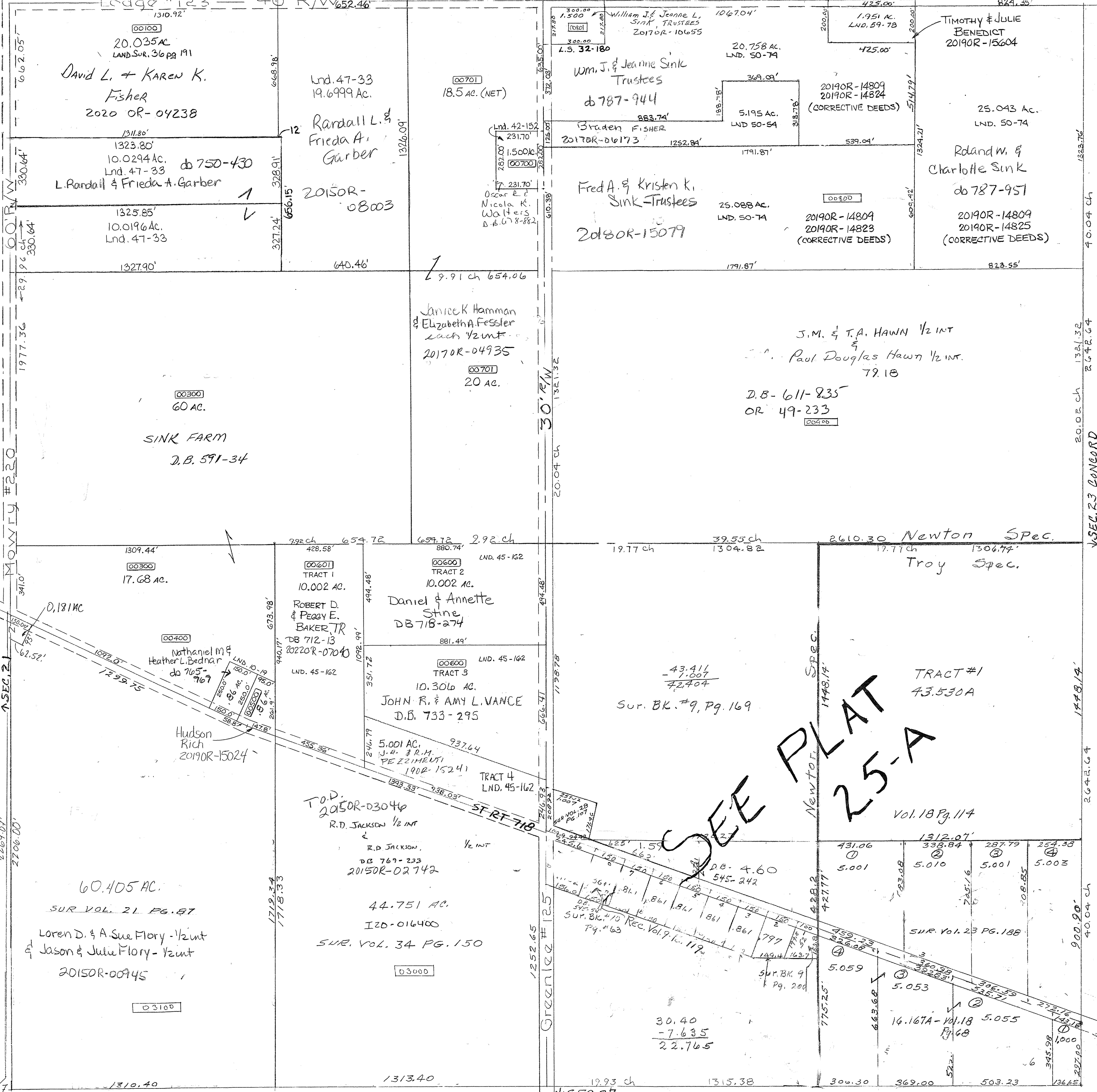


Lodge #123 40' R/W 652.46'

Surveys +
 Vol. 18 Pg. 88 S.E. 207.5 E.
 Vol. 18 Pg. 114 E. P. 5.5 E.
 Vol. 3 Pg. 17 Whole Section
 Vol. 9 Pg. 169 - NW P. 5 E
 Vol. 9 Pg. 200 - Cen 5 P. 5 E
 Vol. 10 Pg. 19 - Cen N P. 5 W
 Vol. 10 Pg. 63 - Cen W P. 5 E



SEE PLAT 25-A

SHADA NUMBER
 I 20-N1025

VSEC. 23 CONCORD

REVISED 05/03/22
 JA