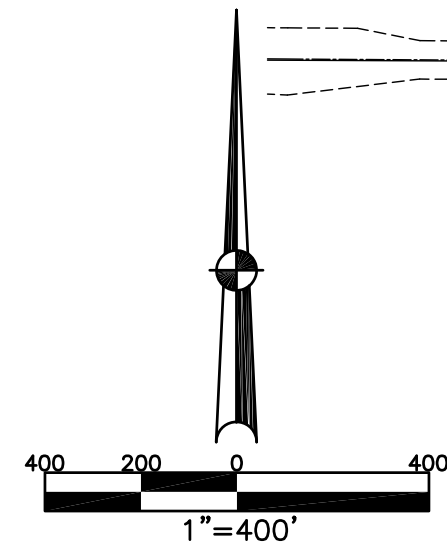


NEWTON TOWNSHIP MIAMI COUNTY, OHIO

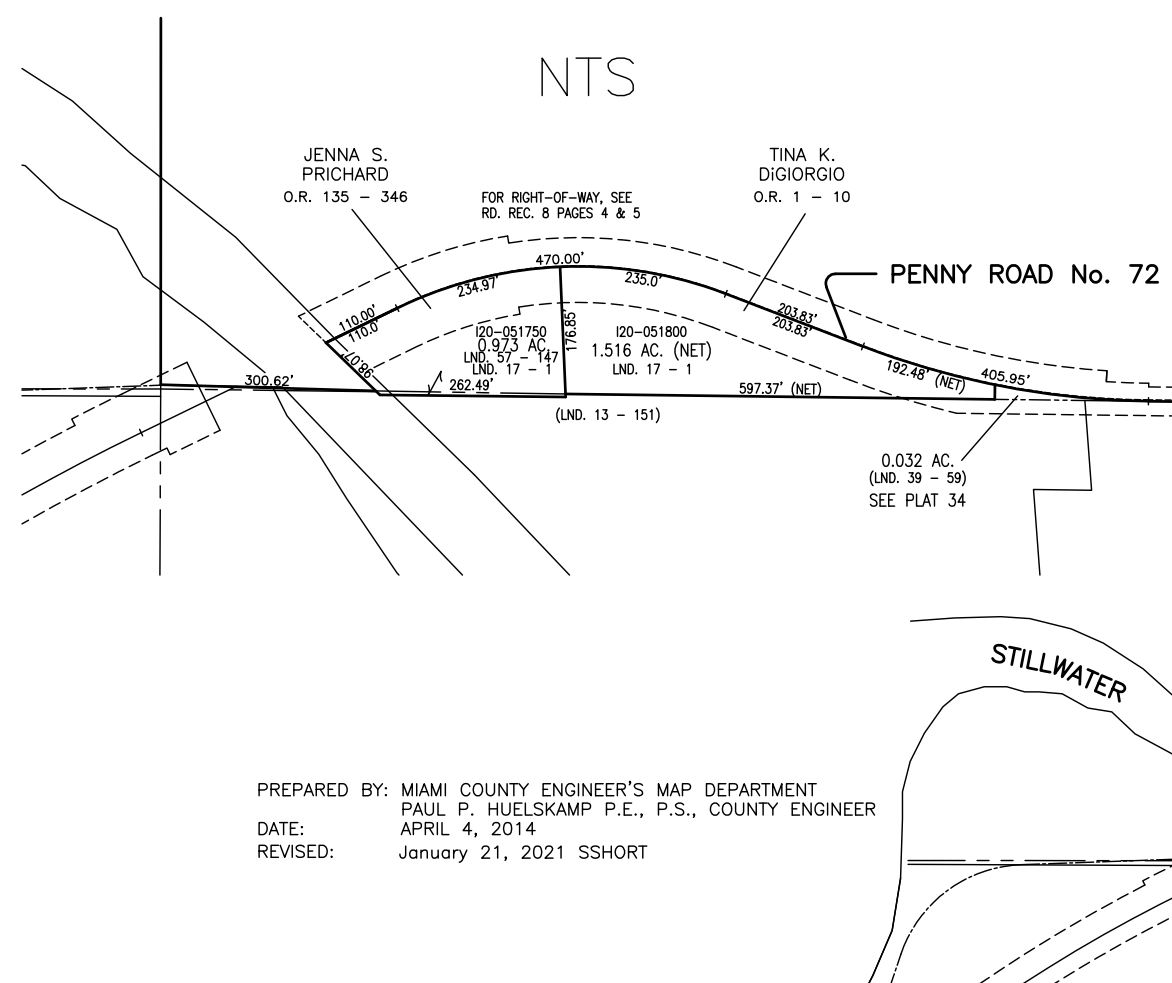
SECTION 20 TOWN 7 RANGE 5

PLAT 23

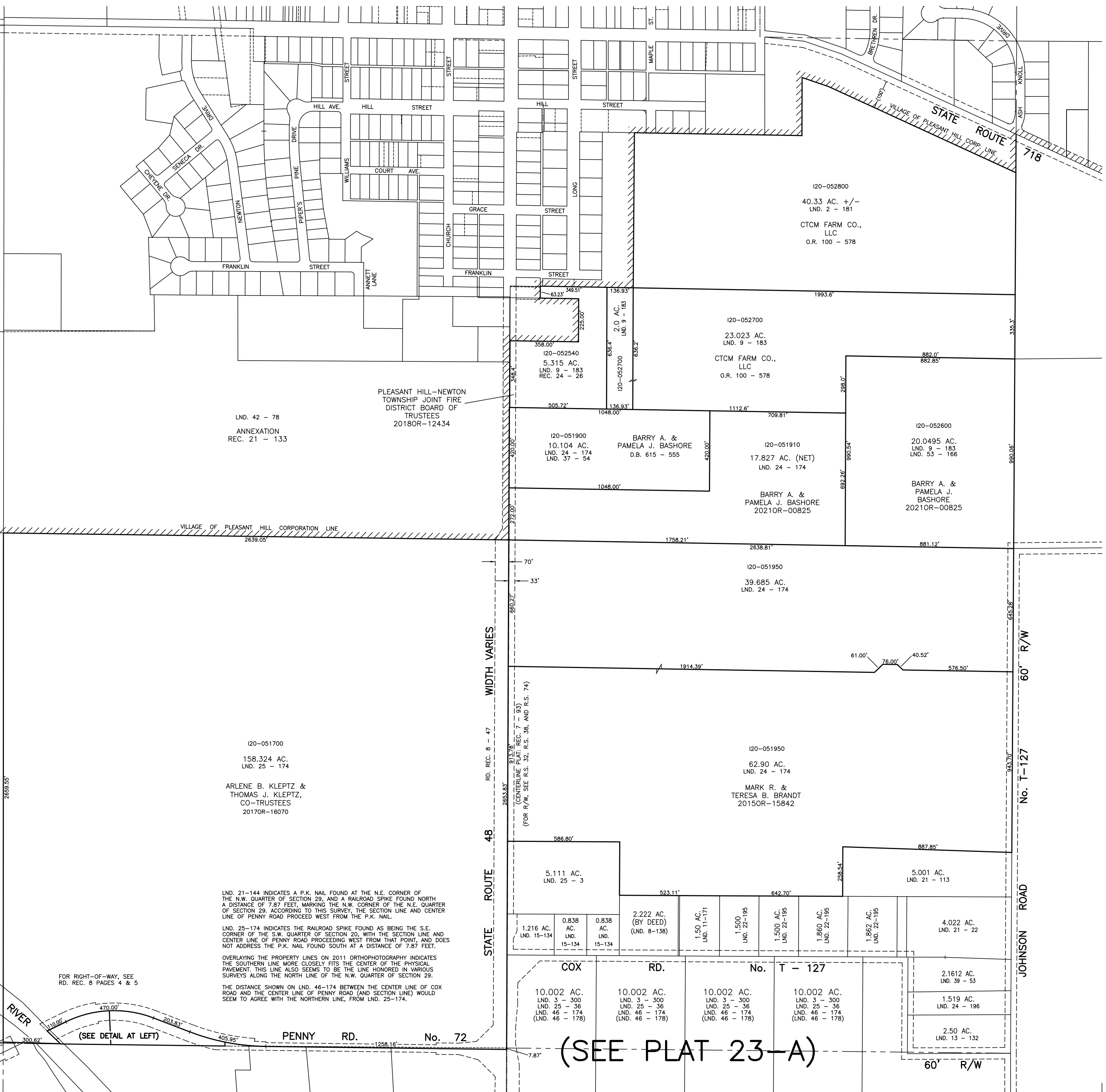


ABBREVIATION LEGEND	
2014OR-07759	= RECORDER'S DOCUMENT NUMBER
OR 406-509	= OFFICIAL RECORD 406 PAGE 509
D.B. 613-172	= DEED BOOK 613, PAGE 172
REC. 15-72	= RECORDER'S PLAT BOOK 15, PAGE 72
LND. 33-15	= LAND SURVEY VOLUME 33, PAGE 15
LOT 19-12	= LOT SURVEY VOLUME 19, PAGE 12
R.R. 8-29	= ROAD RECORD VOLUME 8, PAGE 29
R/W	= RIGHT OF WAY
C	= CENTERLINE
AC.	= ACRES
TWP.	= TOWNSHIP
TR.	= TRACT
IL	= INLOT

SURVEY INDEX			
NORTHWEST QUARTER		NORTHEAST QUARTER	
LND. 9 - 125	REC. 7 - 93	LND. 2 - 181	REC. 24 - 26
LND. 14 - 32	REC. 21 - 133	LND. 9 - 183	
LND. 42 - 78		LND. 24 - 174	
LND. 43 - 51		LND. 37 - 54	
LND. 52 - 50		LND. 53 - 166	
		LND. 54 - 190	
R.R. 8 - 47			
SOUTHWEST QUARTER		SOUTHEAST QUARTER	
LND. 13 - 151	REC. 7 - 93	LND. 3 - 300	REC. 7 - 93
LND. 17 - 1		LND. 8 - 136	
LND. 23 - 174		LND. 11 - 171	
LND. 30 - 59		LND. 13 - 132	
LND. 39 - 94		LND. 15 - 134	
LND. 57-147		LND. 21 - 22	
		LND. 21 - 113	
		LND. 22 - 195	
		LND. 24 - 174	
		LND. 24 - 196	
		LND. 25 - 3	
		LND. 25 - 36	
		LND. 39 - 53	
		LND. 46 - 174	
		LND. 46 - 178	
R.R. 8 - 4			
R.R. 8 - 5			
R.R. 8 - 47			
			R.R. 8 - 47



PREPARED BY: MIAMI COUNTY ENGINEER'S MAP DEPARTMENT
PAUL P. HUELSKAMP P.E., P.S., COUNTY ENGINEER
DATE: APRIL 4, 2014
REVISED: January 21, 2021 SSHORT



(SEE PLAT 23-A)