

# NEWTON TWP.

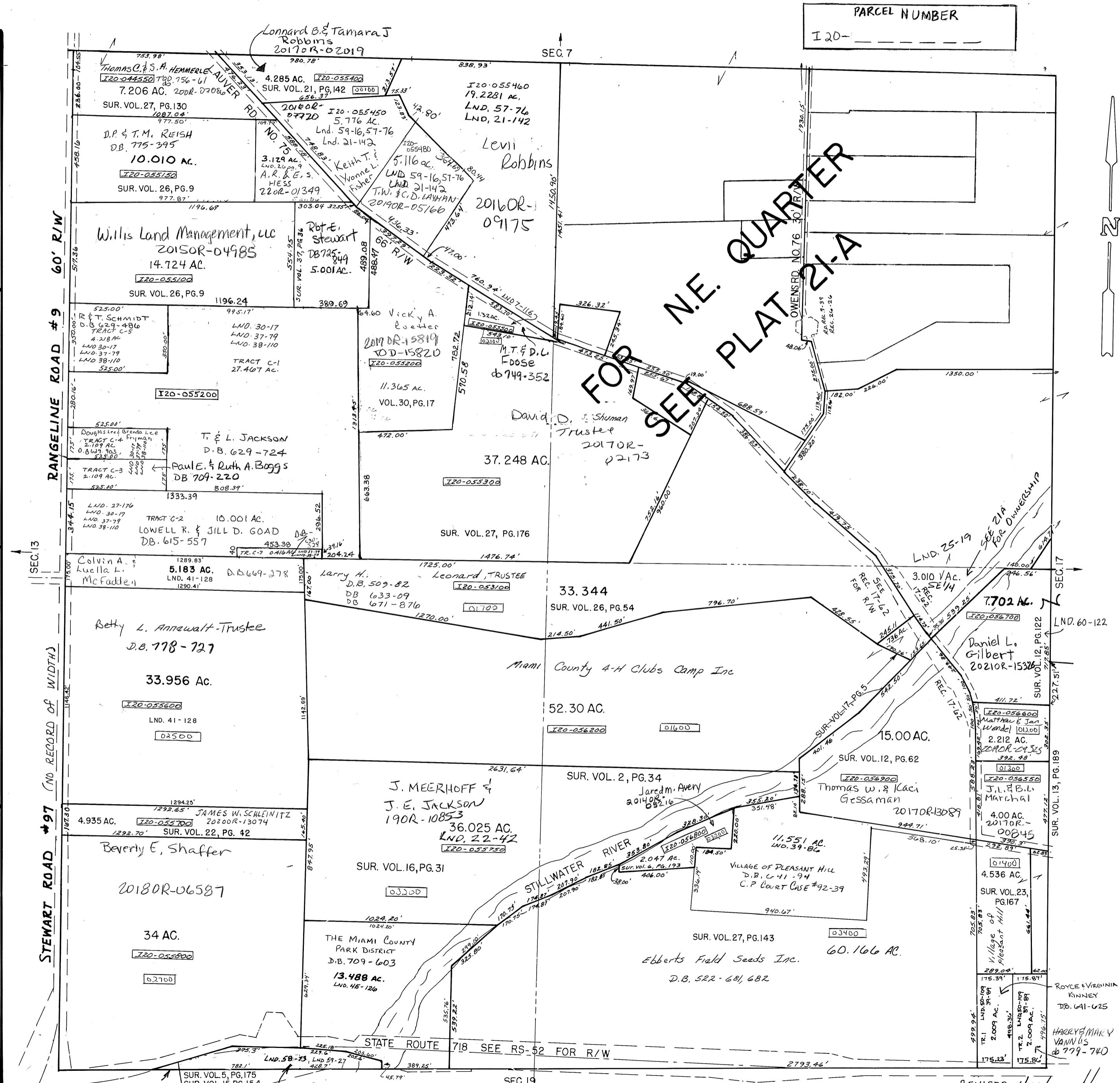
# MIAMI COUNTY, OHIO

# PLAT 21

## Section 18, Town 7, Range 5

SCALE: 1" = 400'

SURVEYS	
SUR. VOL. 2, PG. 34 SUR. VOL. 6, PG. 193 SUR. VOL. 12, PG. 62 SUR. VOL. 12, PG. 122 SUR. VOL. 13, PG. 189 SUR. VOL. 16, PG. 31 SUR. VOL. 17, PG. 5 SUR. VOL. 22, PG. 42 SUR. VOL. 23, PG. 167 SUR. VOL. 26, PG. 54 SUR. VOL. 27, PG. 143 LND. 50-109 LND. 60-122	S.E. QUARTER
SUR. VOL. 4, PG. 286 SUR. VOL. 5, PG. 29 SUR. VOL. 13, PG. 60 SUR. VOL. 15, PG. 177 SUR. VOL. 16, PG. 76 SUR. VOL. 17, PG. 45 SUR. VOL. 23, PG. 9 SWR. VOL. 25, PG. 19 SUR. VOL. 26, PG. 54 SUR. VOL. 27, PG. 90 SUR. VOL. 27, PG. 176 SUR. VOL. 28, PG. 52 SUR. VOL. 31, PG. 79 Lnd. 45-122	N.E. QUARTER
SUR. VOL. 5, PG. 175 SUR. VOL. 15, PG. 154 SUR. VOL. 16, PG. 31 SUR. VOL. 22, PG. 42 SUR. VOL. 26, PG. 54 SUR. VOL. 27, PG. 143 LND. 41-128 LND. 45-126 LND. 58-73 LND. 59-27	S.W. QUARTER REC. BK. 8, PG. 79
SUR. VOL. 2, PG. 35 SUR. VOL. 7, PG. 116 SUR. VOL. 21, PG. 142 SUR. VOL. 26, PG. 9 SUR. VOL. 27, PG. 130 SUR. VOL. 27, PG. 176 SUR. VOL. 30, PG. 17 SUR. VOL. 31, PG. 95 SUR. VOL. 37, PG. 36 SUR. VOL. 37 PG. 79 LND. 38-110 LND. 57-76 Lnd. 59-16	N.W. QUARTER



REVISED: 1/26/22