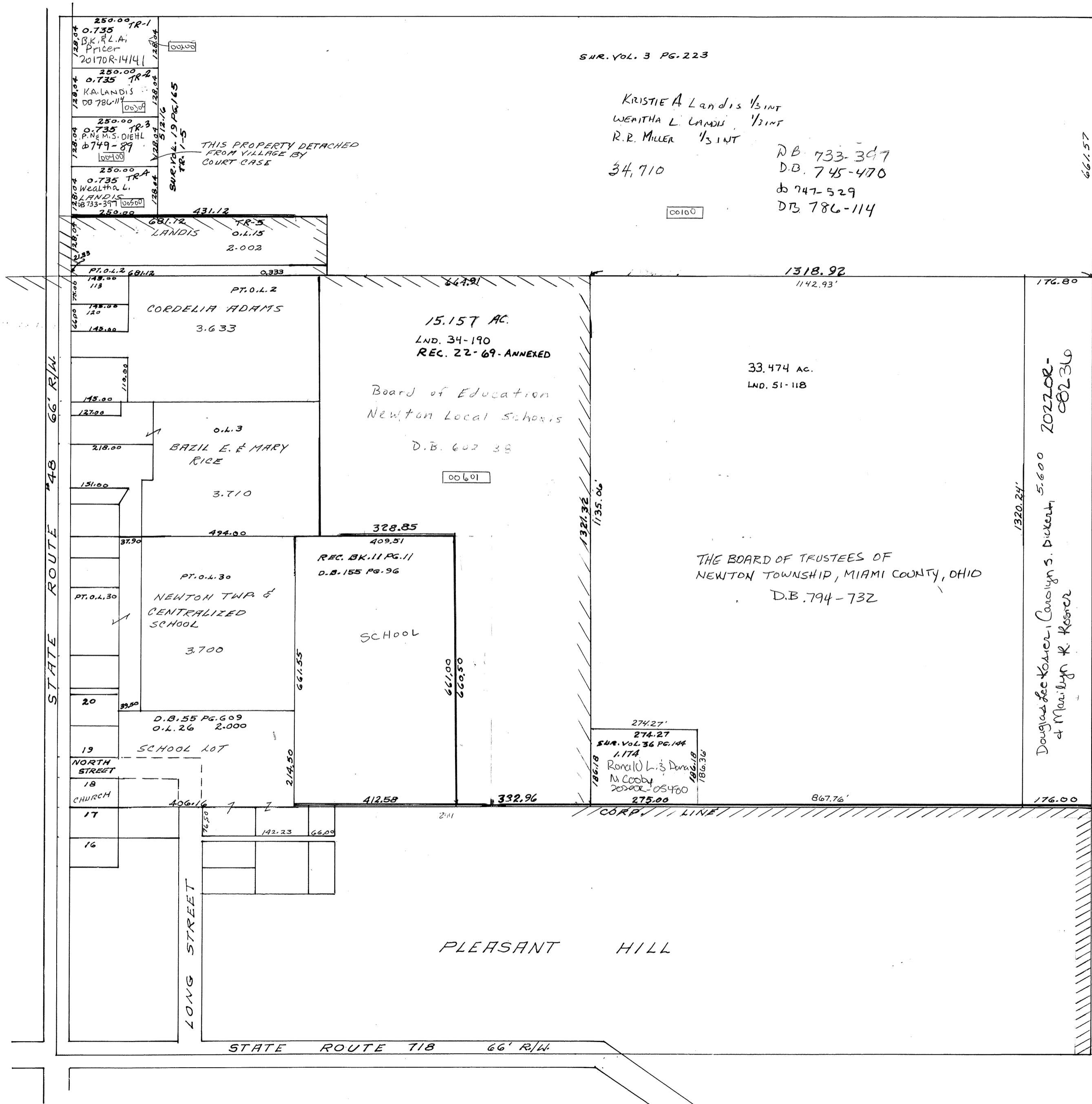


SMIDA NUMBER  
17-NT0008



SUR. VOL. 3 PG. 223

KRISTIE A Landis 1/3 INT  
WENITHA L LANDIS 1/3 INT  
R. R. MILLER 1/3 INT

34,710  
RB 733-347  
DB 745-470  
DB 747-529  
DB 786-114

661.57

STATE ROUTE 748 66' R/W

NORTH STREET

CHURCH

LONG STREET

STATE ROUTE 718 66' R/W

PLEASANT HILL

CORP. LINE

Douglas Lee Komer, Carolyn S. Dickett, 5.600 2022 OR-08236  
& Marilyn R. Rosner