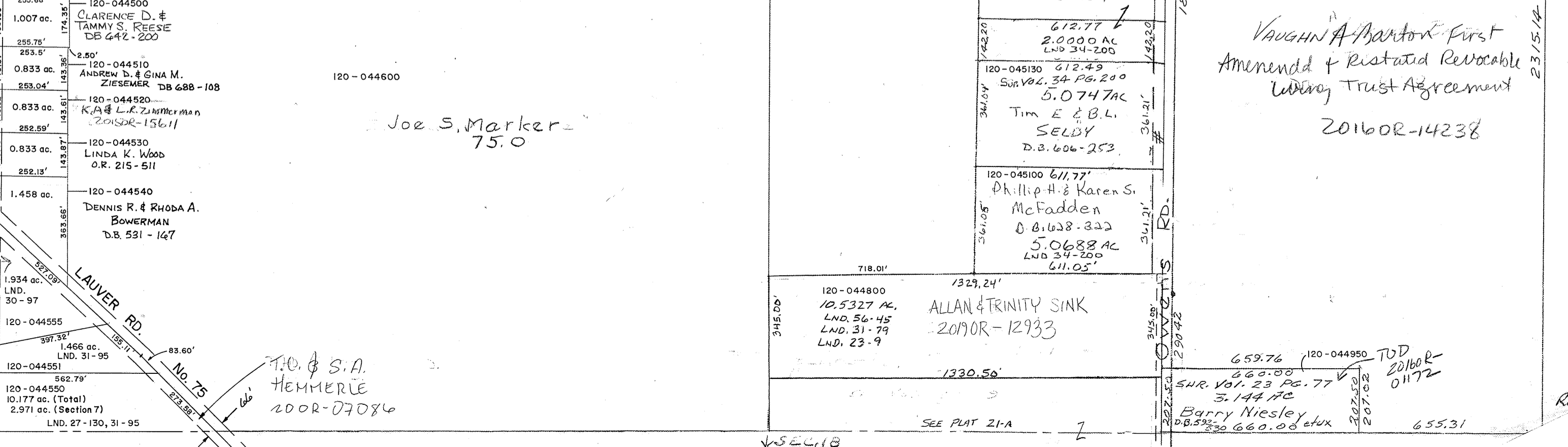
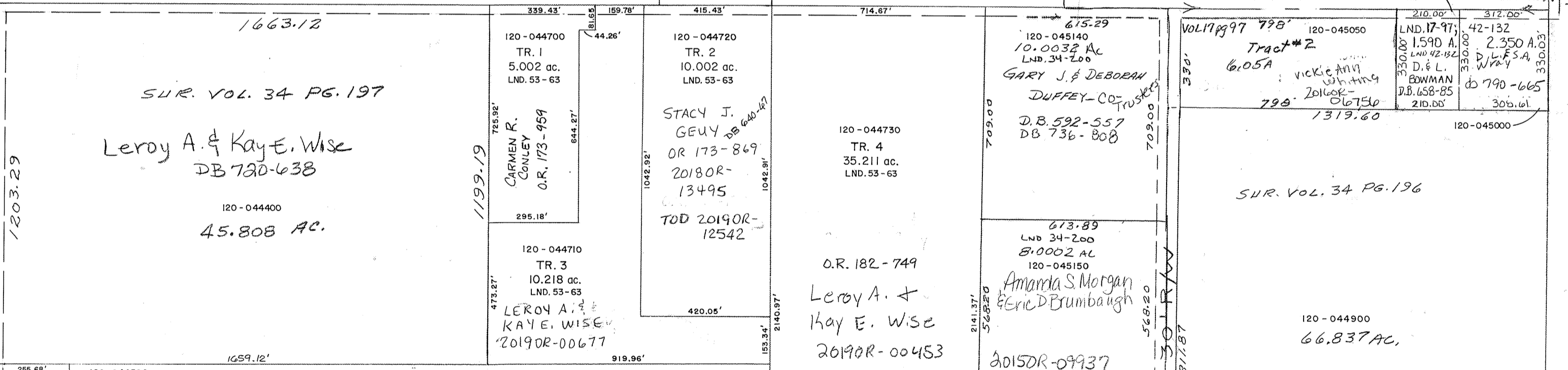
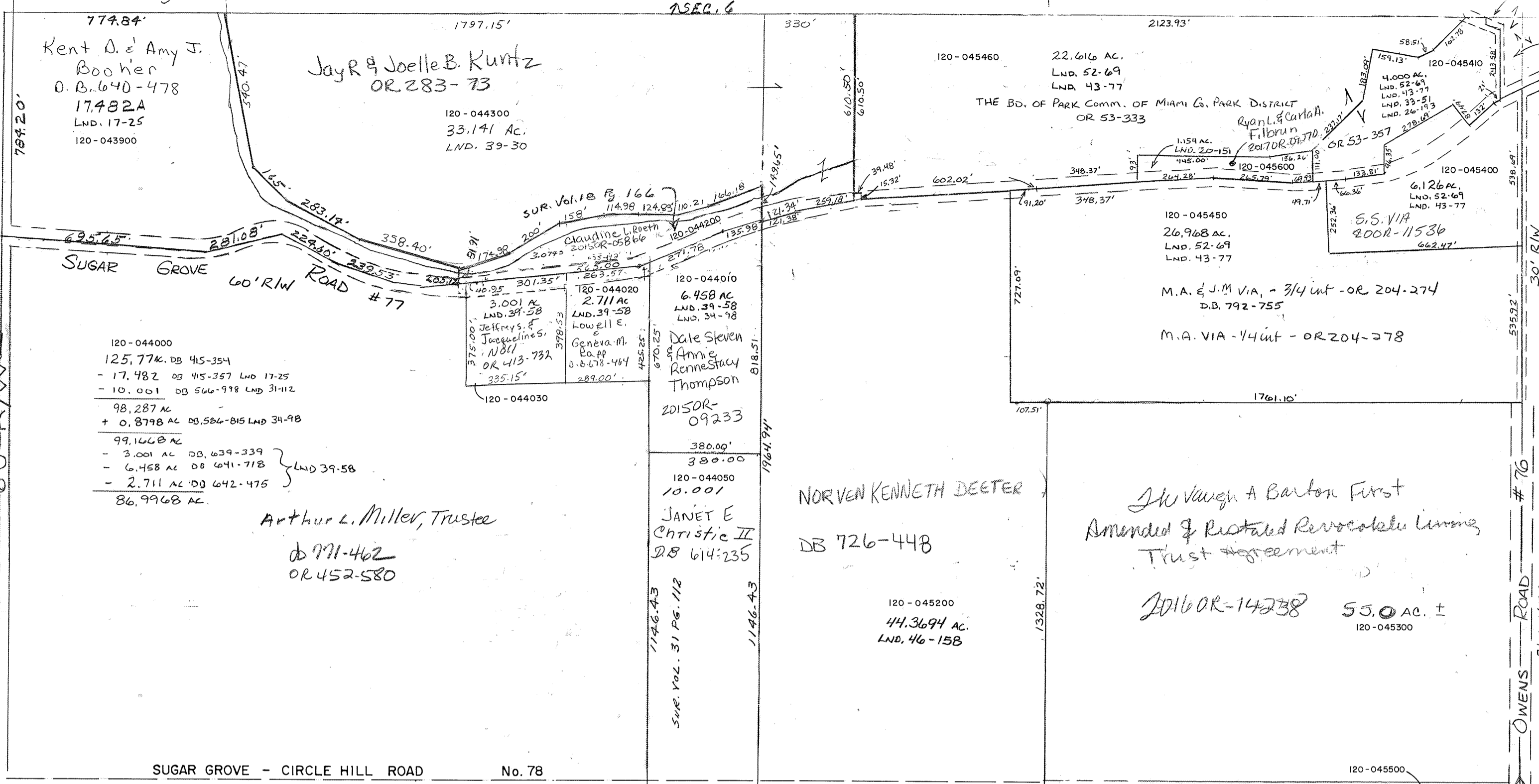


LND. 24-193 NE 1/4
LND. 33-51 NE 1/4
LND. 34-98 NW 1/4
LND. 39-30 NW 1/4 & NE 1/4
LND. 39-58 NW 1/4
LND. 43-77 NE 1/4
LND. 53-43 SW 1/4 & SE 1/4

SURVEYS:
Vol. 11 Pg. 75 - W Pt SW
Vol. 11 Pg. 114 - W Pt SW
Vol. 17 Pg. 25 - N.W. COR. NW
Vol. 17 Pg. 97 - N.E. COR. S.E.



TOD 2016OR-05345
David B. & Jennifer J. Messinger
2017OR-13500

CRAIG A. & PAMELA S. DENLINGER
DB 775 - 320

T.O. & S.A. HEMMERIE
200R-07086

659.76 (120-044950) TOD 2016OR-01172
SHR. Vol. 23 Pg. 77
3,144 AC
Barry Niesley
DB 532-330 660.00 et ux
2017OR-20708



OWENS ROAD #76
RAW N.T.S.
VSEC. 8

RANGE LINE ROAD No. 9
1203.29

SUGAR GROVE - CIRCLE HILL ROAD No. 78

SEE PLAT 21-A

REVISED