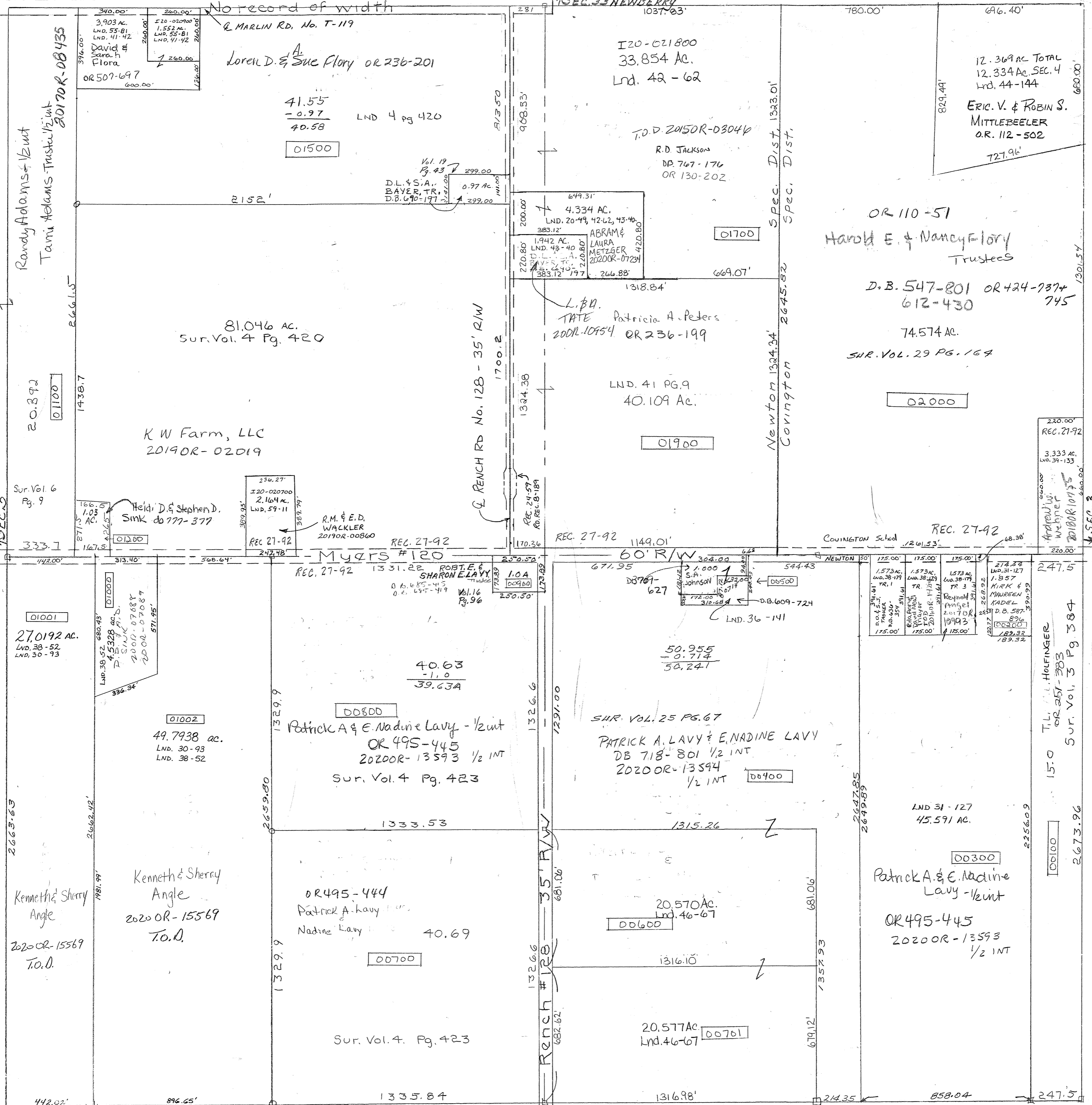


Lnd. 44-144 NE Cor. NE QTR.  
Lnd. 46-67 W. Pt. SE QTR.

Surveys:  
Vol. 3 Pg. 304 - E 1/4 SE  
Vol. 4 Pg. 423 - E 1/2 SW  
Vol. 4 Pg. 420 - S 1/4 NW  
Vol. 6 Pg. 9 - W 1/4 NW  
Vol. 16 Pg. 96 - N.E. Cor. S.W.  
LND. 41-9 - SW COR. NE & SE COR. NW  
LND. 42-62 NW COR. NE QTR.



GALLAMAR DITCH  
EASEMENTS  
REC. 27-92

REVISED 2-8-2019  
D. VENTURA  
9-17-2019 DGS