

# MONROE TWP.

MIAMI COUNTY, OHIO

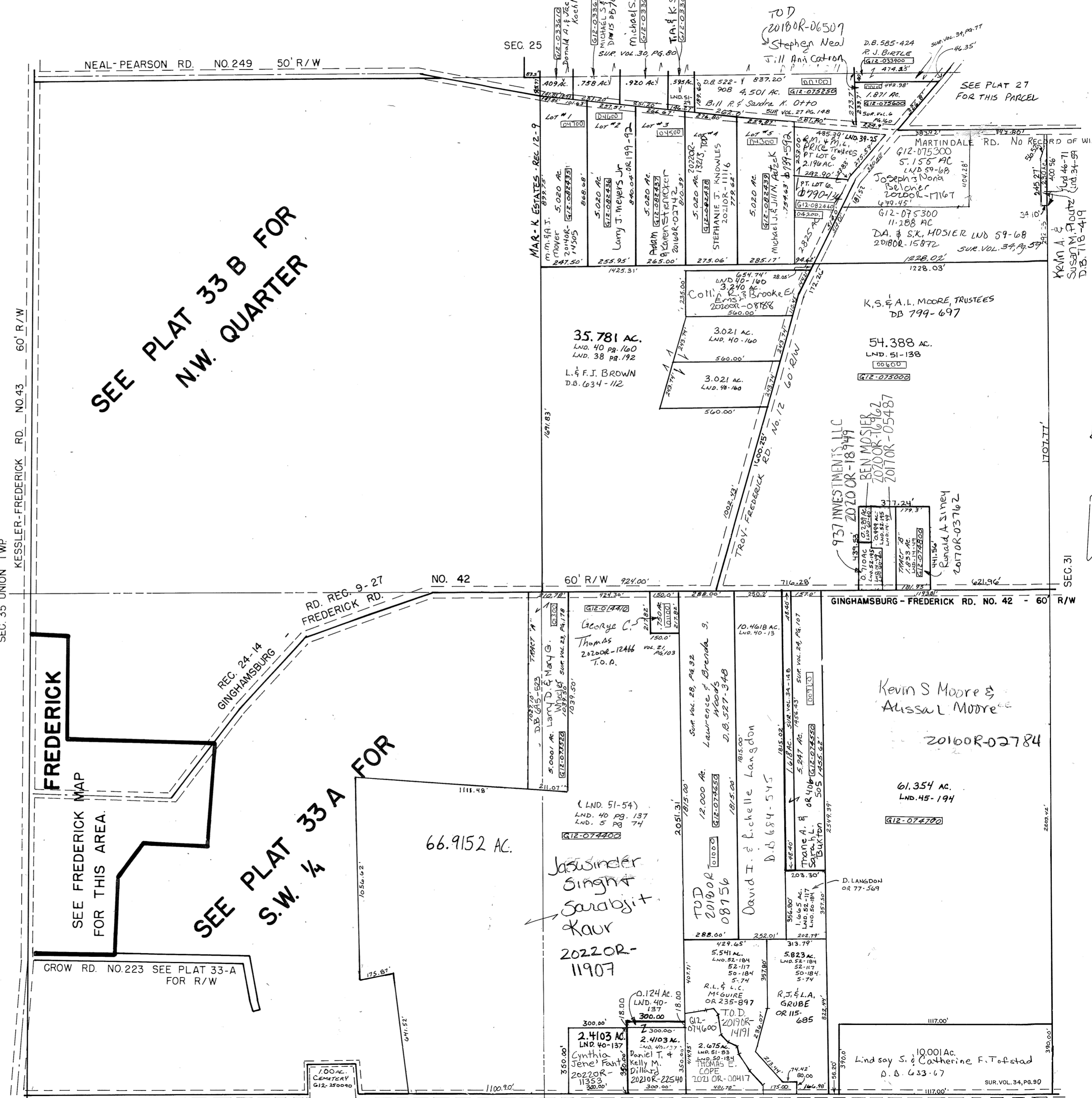
Section 36, Town 6, Range 5

# PLAT 33

SCALE: 1" = 400'

PARCEL NUMBER  
G12 - \_\_\_\_\_

SURVEYS		
S.E. QUARTER		
SUR. VOL. 5, PG. 74 SUR. VOL. 5, PG. 92 SUR. VOL. 7, PG. 130 SUR. VOL. 21, PG. 103 SUR. VOL. 23, PG. 178 SUR. VOL. 24, PG. 56 SUR. VOL. 24, PG. 58 SUR. VOL. 24, PG. 107 SUR. VOL. 28, PG. 32 SUR. VOL. 34, PG. 148 " " " 40, PG. 13 " " " 40, PG. 137 LND. SUR. 45 PG. 194 LND. 50-184 LND. 51-54 LND. 51-83 LND. 52-117 LND. 52-184	REC. 24-14, RD. REC. 9-27	
N.E. QUARTER		
SUR. VOL. 3, PG. 39 SUR. VOL. 6, PG. 160 SUR. VOL. 14, PG. 49 SUR. VOL. 27, PG. 148 SUR. VOL. 30, PG. 80 SUR. VOL. 34, PG. 59 SUR. VOL. 34, PG. 77 LND. 38-192 LND. 39-25 LND. Vol. 40 pg. 160 LND. 46-71 LND. 51-29 LND. 51-138 LND. 52-195 LND. 57-151 LND. 59-69 LND. 60-40	REC. BK. 12, PG. 9 REC. 24-14, RD. REC. 9-27	
S.W. QUARTER		
SUR. VOL. 4, PG. 430 SUR. VOL. 4, PG. 434 SUR. VOL. 5, PG. 62, 74 SUR. VOL. 6, PG. 11 SUR. VOL. 7, PG. 130 SUR. VOL. 8, PG. 11 SUR. VOL. 9, PG. 26 SUR. VOL. 10, PG. 184 SUR. VOL. 11, PG. 137 SUR. VOL. 11, PG. 154 SUR. VOL. 12, PG. 3 SUR. VOL. 14, PG. 110 SUR. VOL. 15, PG. 33 SUR. VOL. 15, PG. 93 SUR. VOL. 19, PG. 180 SUR. VOL. 22, PG. 43 SUR. VOL. 23, PG. 75 SUR. VOL. 23, PG. 178 SUR. VOL. 24, PG. 56 SUR. VOL. 24, PG. 58 SUR. VOL. 27, PG. 123 SUR. VOL. 26, PG. 173 SUR. VOL. 28, PG. 164	SUR. VOL. 31, PG. 134 SUR. VOL. 32, PG. 3 SUR. VOL. 32, PG. 81 SUR. VOL. 12, PG. 77 LND. SUR. 40, PG. 137 LND. 51-54 SEE PLAT 33-A	LOT BK. 4, PG. 116 REC. 24-14, RD. REC. 9-27
N.W. QUARTER		
SUR. VOL. 4, PG. 95 SUR. VOL. 6, PG. 197 SUR. VOL. 8, PG. 33 SUR. VOL. 8, PG. 121 SUR. VOL. 9, PG. 64 SUR. VOL. 15, PG. 76 SUR. VOL. 15, PG. 91 SUR. VOL. 15, PG. 93 SUR. VOL. 20, PG. 60 SUR. VOL. 22, PG. 6 SUR. VOL. 26, PG. 141 SUR. VOL. 27, PG. 33 SUR. VOL. 30, PG. 43 SUR. VOL. 30, PG. 96 SEE PLAT 33-B	REC. 24-14, RD. REC. 9-27	



SEE PLAT 33 B FOR N.W. QUARTER

SEE FREDERICK MAP FOR THIS AREA.

SEE PLAT 33 A FOR S.W. 1/4

