

# MONROE TWP.

# MIAMI COUNTY, OHIO

# Section 35, Town 4, Range 6

# PLAT 31-B

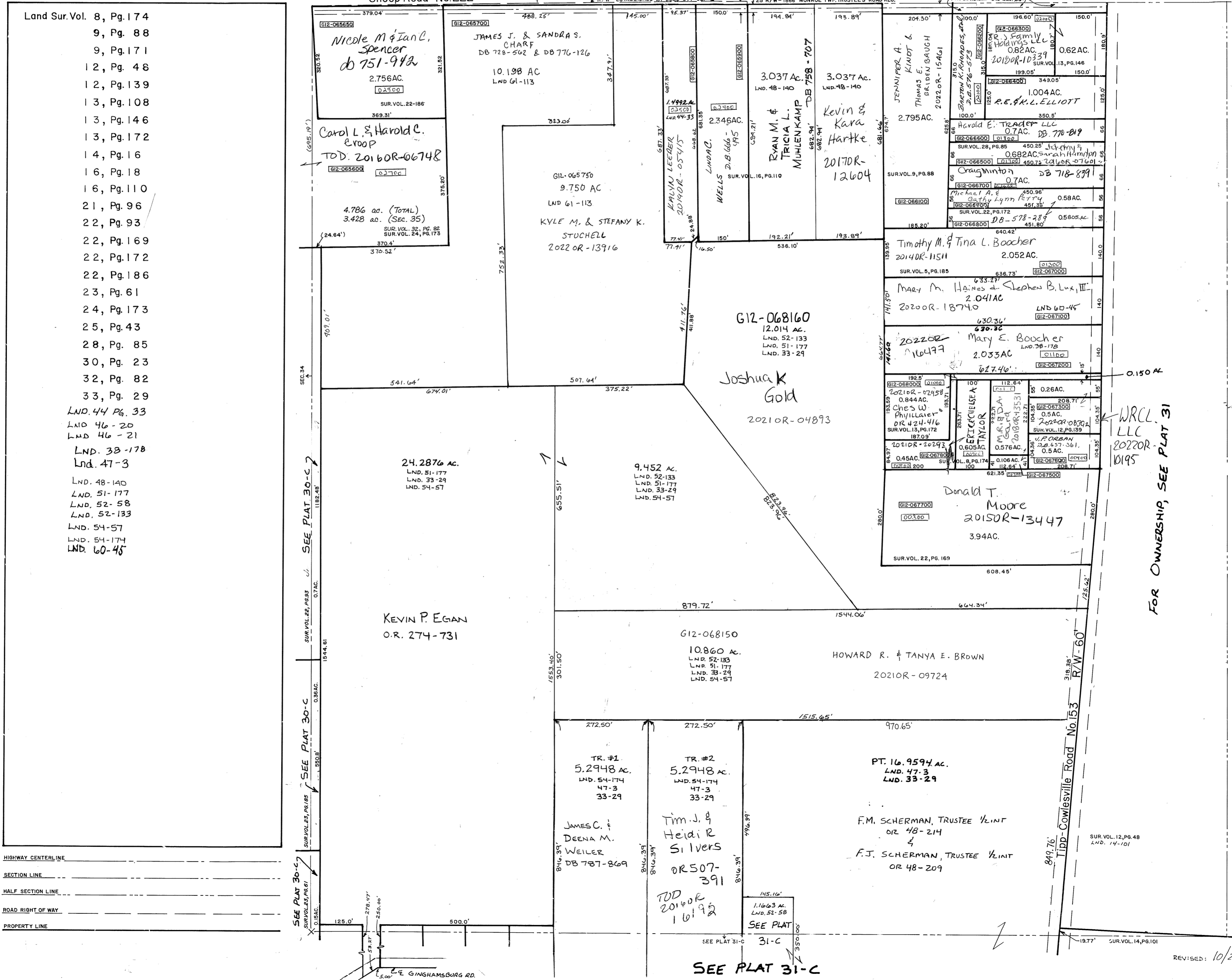
# N.W. Quarter SEC. 35

SCALE: 1" = 200'

PARCEL NUMBER  
G12-

### SURVEYS & RECORD PLATS

- Land Sur. Vol. 8, Pg. 174
- 9, Pg. 88
- 9, Pg. 171
- 12, Pg. 48
- 12, Pg. 139
- 13, Pg. 108
- 13, Pg. 146
- 13, Pg. 172
- 14, Pg. 16
- 16, Pg. 18
- 16, Pg. 110
- 21, Pg. 96
- 22, Pg. 93
- 22, Pg. 169
- 22, Pg. 172
- 22, Pg. 186
- 23, Pg. 61
- 24, Pg. 173
- 25, Pg. 43
- 28, Pg. 85
- 30, Pg. 23
- 32, Pg. 82
- 33, Pg. 29
- LND. 44 Pg. 33
- LND. 46-20
- LND. 46-21
- LND. 38-178
- LND. 47-3
- LND. 48-140
- LND. 51-177
- LND. 52-58
- LND. 52-133
- LND. 54-57
- LND. 54-174
- LND. 60-45



FOR OWNERSHIP, SEE PLAT 31