

MONROE TWP.

MIAMI COUNTY, OHIO

PLAT 31-A

Section 35, Town 4, Range 6

S.W. Quarter SEC. 35

HILLTOP PLAT
REC. VOL. 4 PG. 76

PARCEL NUMBER
G12 - - - - -

SURVEYS

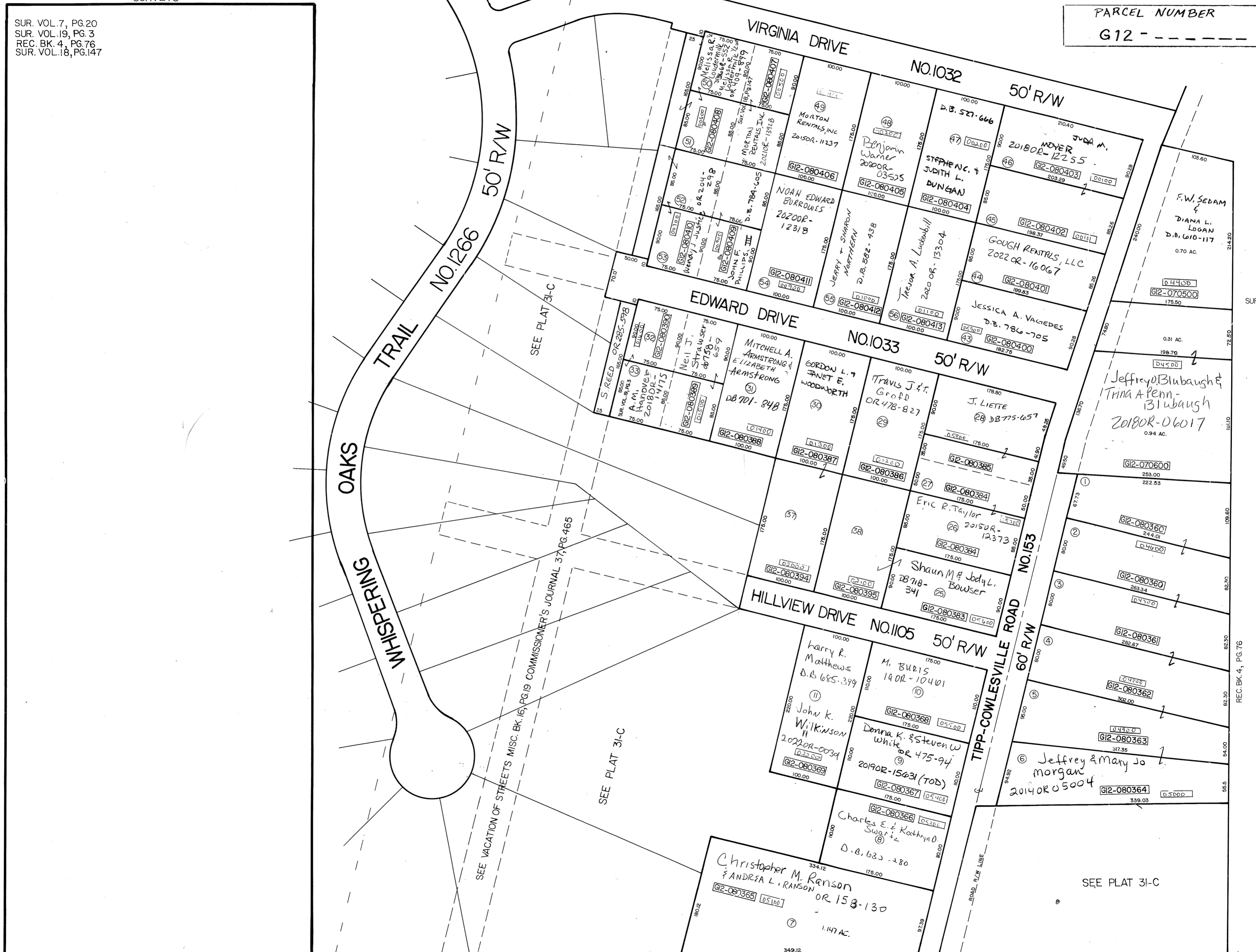
SUR. VOL. 7, PG. 20
SUR. VOL. 19, PG. 3
REC. BK. 4, PG. 76
SUR. VOL. 18, PG. 147



SCALE 1"=100'

SUR. BK. 7, PG. 20

REC. BK. 4, PG. 76



SEE VACATION OF STREETS MISC. BK. 16, PG. 19 COMMISSIONER'S JOURNAL 37 PG. 465

SEE PLAT 31-C

SEE PLAT 31-C

SEE PLAT 31-C