

MONROE TWP.

MIAMI COUNTY, OHIO

PLAT 31

Section 35, Town 4, Range 6

SCALE: 1" = 400' SEC. 35

SMDA NUMBER
G12 - M0031 -

SURVEYS & RECORD PLATS

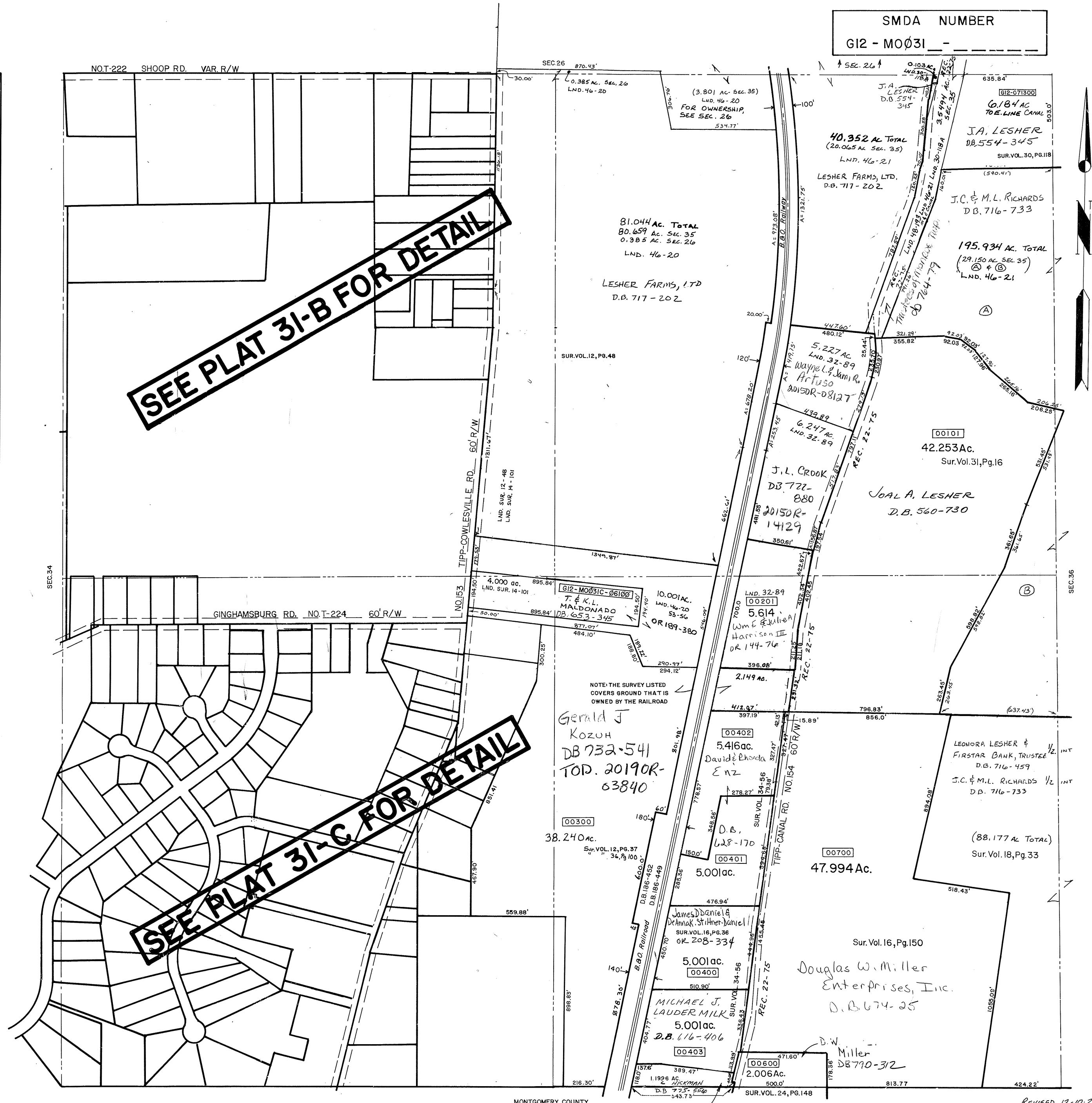
NORTHEAST QUARTER

Sur. Vol. 12, Pg. 48
 30, Pg. 118
 31, Pg. 16
 32, Pg. 89
 34, Pg. 54
 LND 46-20
 LND 46-21
 LND 48-193

SOUTHEAST QUARTER

Sur. Vol. 8, Pg. 170
 12, Pg. 37
 14, Pg. 101
 16, Pg. 36
 16, Pg. 150
 18, Pg. 33
 24, Pg. 148
 34, Pg. 56
 36, Pg. 100
 LND 32-89
 LND 46-20
 LND 46-21

CENTERLINE
 SECTION LINE
 HALF SECTION LINE
 HIGHWAY RIGHT-OF-WAY
 PROPERTY LINE



SEE PLAT 31-B FOR DETAIL

SEE PLAT 31-C FOR DETAIL