

MONROE TWP.

MIAMI COUNTY, OHIO

PLAT 30-D

Section 34, Town 4, Range 6

S.E. Quarter SEC. 34

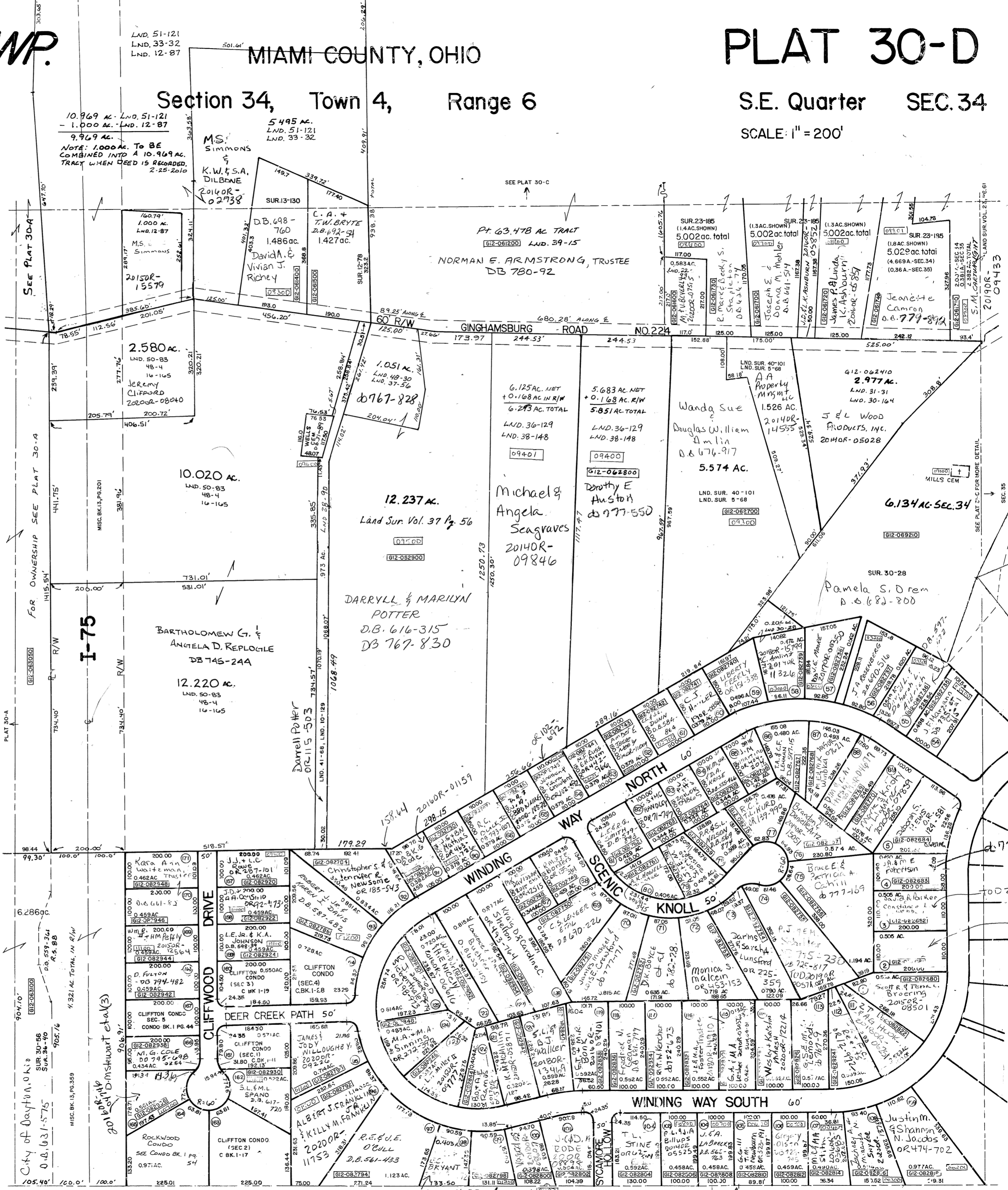
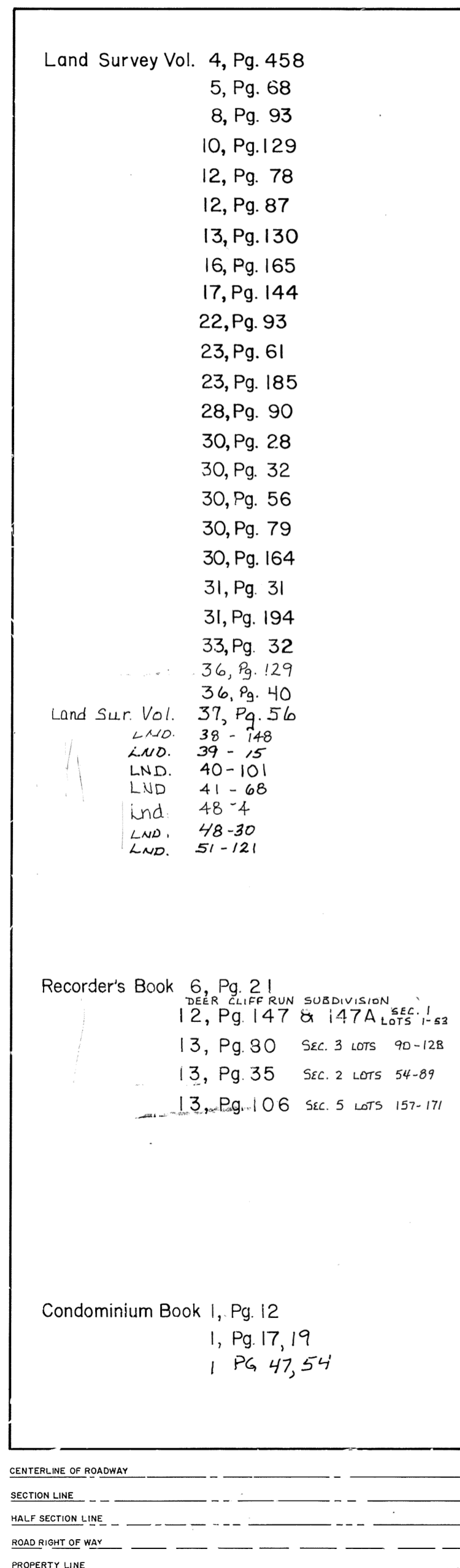
SCALE: 1" = 200'

SURVEYS & REC. BK. PLATS

- Land Survey Vol. 4, Pg. 458
- 5, Pg. 68
- 8, Pg. 93
- 10, Pg. 129
- 12, Pg. 78
- 12, Pg. 87
- 13, Pg. 130
- 16, Pg. 165
- 17, Pg. 144
- 22, Pg. 93
- 23, Pg. 61
- 23, Pg. 185
- 28, Pg. 90
- 30, Pg. 28
- 30, Pg. 32
- 30, Pg. 56
- 30, Pg. 79
- 30, Pg. 164
- 31, Pg. 31
- 31, Pg. 194
- 33, Pg. 32
- 36, Pg. 129
- 36, Pg. 40
- 37, Pg. 56
- Land Sur. Vol. LND. 38-148
- LND. 39-15
- LND. 40-101
- LND. 41-68
- LND. 48-4
- LND. 48-30
- LND. 51-121

- Recorder's Book 6, Pg. 21
- 12, Pg. 147 & 147A
- 13, Pg. 80
- 13, Pg. 35
- 13, Pg. 106

- Condominium Book 1, Pg. 12
- 1, Pg. 17, 19
- 1, Pg. 47, 54



201804183
TOD-04184
MONTGOMERY COUNTY 190R-06237
K.M. & A.N. OPARAH
Revised 12-22-2014
D. VENTURA