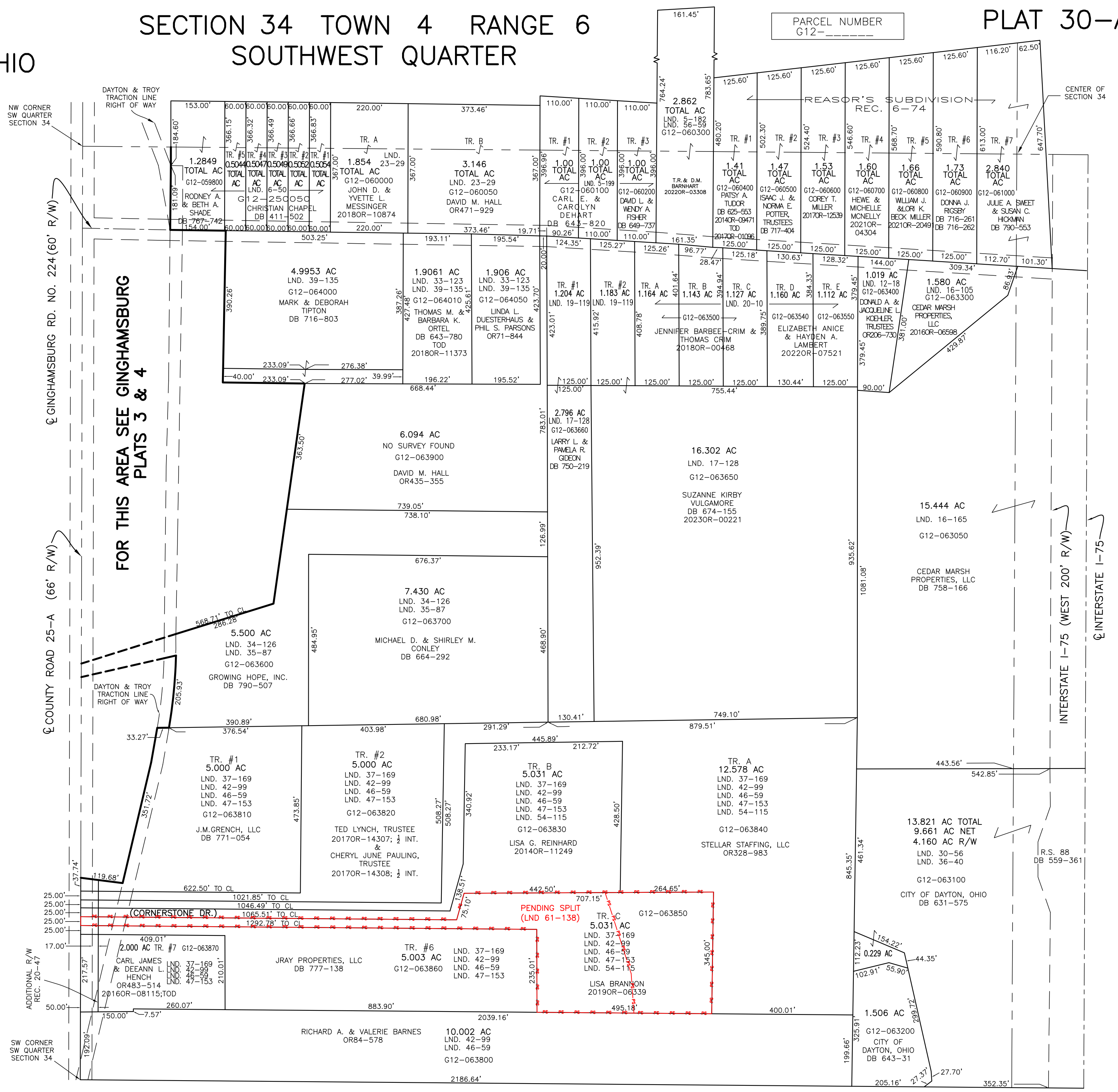
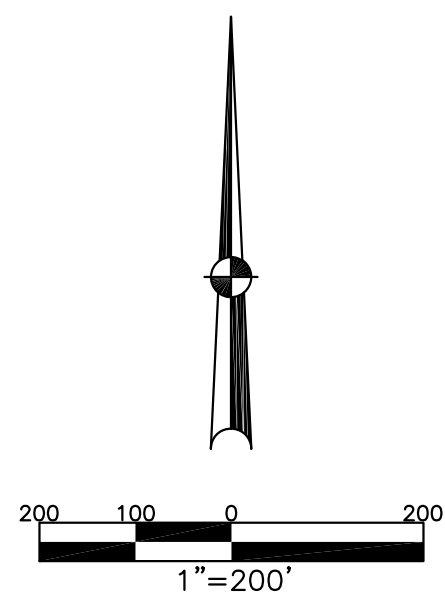


MONROE TWP.
MIAMI COUNTY, OHIO

SECTION 34 TOWN 4 RANGE 6
SOUTHWEST QUARTER

PARCEL NUMBER
G12-_____

PLAT 30-A



ABBREVIATION LEGEND		
2014OR-07759	=	RECORDER'S DOCUMENT NUMBER
OR 257-619	=	OFFICIAL RECORD 257 PAGE 619
D.B. 613-172	=	DEED BOOK 613, PAGE 172
REC. 15-72	=	RECORDER'S PLAT BOOK 15, PAGE 72
LND. 33-15	=	LAND SURVEY VOLUME 33, PAGE 15
LOT 19-12	=	LOT SURVEY VOLUME 19, PAGE 12
R.R. 8-29	=	ROAD RECORD VOLUME 8, PAGE 29
R/W	=	RIGHT OF WAY
CL	=	CENTERLINE
AC.	=	ACRES
TWP.	=	TOWNSHIP
TR.	=	TRACT
Ⓢ	=	LOT CREATED BY RECORDER'S PLAT

LINE LEGEND	
	Blow-up Boundary
	Property Line
	Lot Split Line
	Section Line
	Centerline
	Right-of-Way Line
	Corporation Line

SURVEY INDEX		
LND. 2-16	LND. 19-119	REC. 6-21
LND. 5-138	LND. 20-10	REC. 6-74
LND. 5-159	LND. 21-152	REC. 20-47
LND. 5-182	LND. 23-29	R.S. 88
LND. 5-190-A	LND. 30-56	
LND. 5-193	LND. 30-191	
LND. 5-199	LND. 31-158	
LND. 6-36	LND. 33-123	
LND. 6-50	LND. 34-126	
LND. 11-53	LND. 35-87	
LND. 11-163	LND. 36-40	
LND. 12-18	LND. 37-169	
LND. 12-194	LND. 39-135	
LND. 15-65	LND. 42-99	
LND. 16-105	LND. 46-59	
LND. 16-147	LND. 47-153	
LND. 17-128	LND. 54-115	
LND. 18-35	LND. 56-59	
LND. 18-84		
LND. 18-149		

PREPARED BY: MIAMI COUNTY ENGINEER'S MAP DEPARTMENT
PAUL P. HUELSKAMP, P.E., P.S., COUNTY ENGINEER
DATE: December 11, 2020 MSTORMS
REVISED: January 19, 2023 ASMITH

SW CORNER
SW QUARTER
SECTION 34