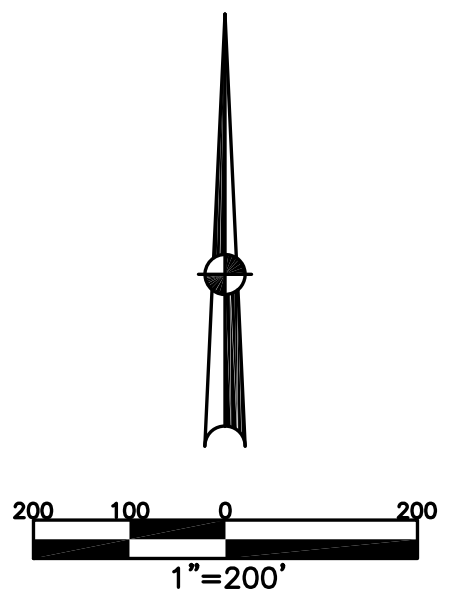


MONROE TWP.  
MIAMI COUNTY, OHIO

SECTION 33 TOWN 4 RANGE 6  
NORTHEAST QUARTER

PARCEL NUMBER  
G12-\_\_\_\_\_

PLAT 29-A



MARROY MANOR  
SEC. 1  
REC. 10-41  
LOTS 1-20  
  
SEC. 2  
REC. 11-22  
LOTS 21-42

ABBREVIATION LEGEND		
20140R-07759	=	RECORDER'S DOCUMENT NUMBER
OR 257-619	=	OFFICIAL RECORD 257 PAGE 619
D.B. 613-172	=	DEED BOOK 613, PAGE 172
REC. 15-72	=	RECORDER'S PLAT BOOK 15, PAGE 72
LND. 33-15	=	LAND SURVEY VOLUME 33, PAGE 15
LOT 19-12	=	LOT SURVEY VOLUME 19, PAGE 12
R.R. 8-29	=	ROAD RECORD VOLUME 8, PAGE 29
R/W	=	RIGHT OF WAY
C	=	CENTERLINE
AC.	=	ACRES
TWP.	=	TOWNSHIP
TR.	=	TRACT
②	=	LOT CREATED BY RECORDER'S PLAT

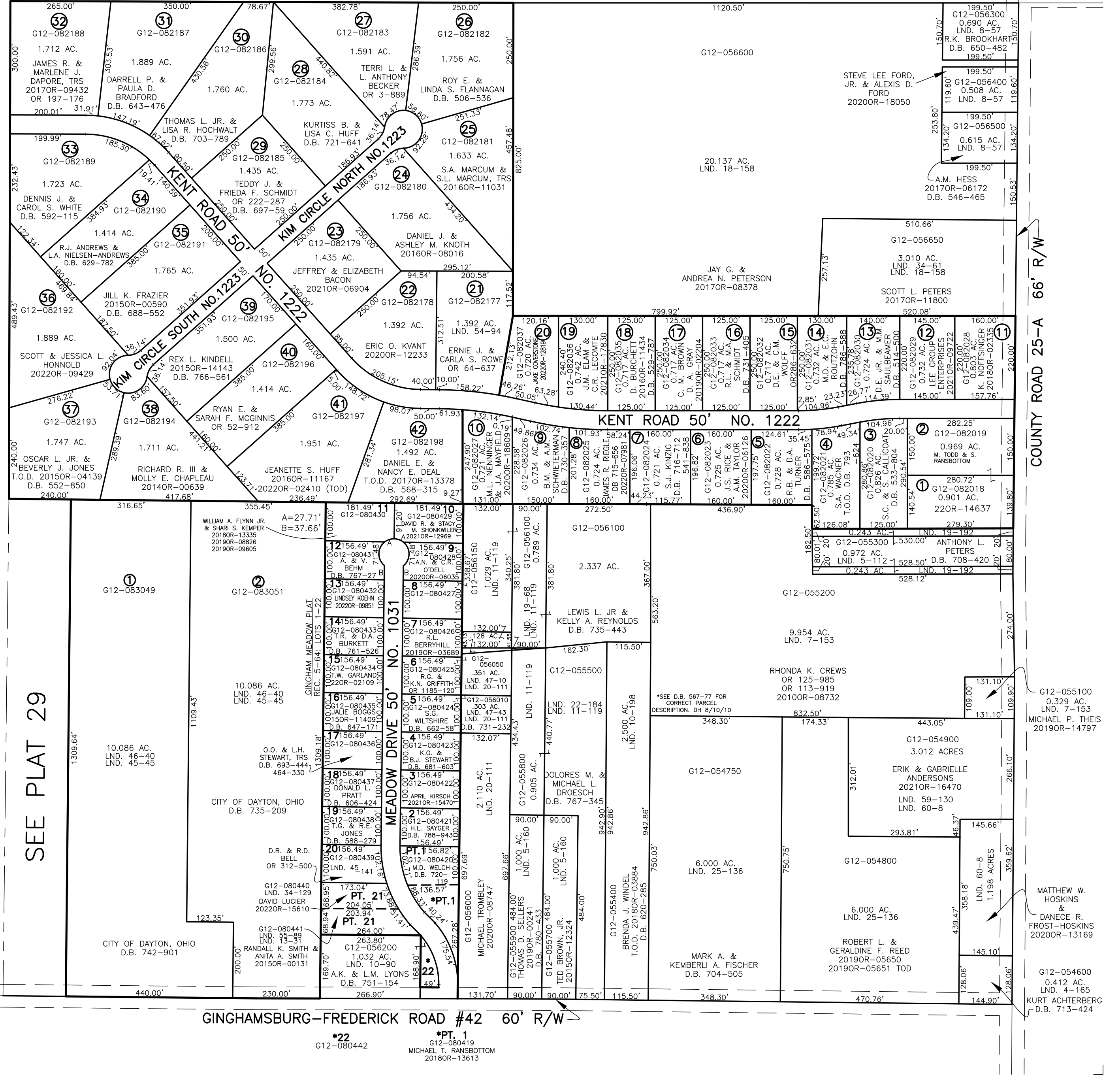
LINE LEGEND		
	=	Blow-up Boundary
	=	Property Line
	=	Lot Split Line
	=	Section Line
	=	Centerline
	=	Right-of-Way Line
	=	Corporation Line

SURVEY INDEX		
LND. 2-140	LND. 25-136	REC. 5-64
LND. 4-165	LND. 29-83	REC. 10-41
LND. 5-112	LND. 34-61	REC. 11-22
LND. 5-160	LND. 34-129	REC. 19-59
LND. 6-66	LND. 45-45	REC. 19-72
LND. 7-153	LND. 45-141	
LND. 8-57	LND. 46-40	
LND. 9-48	LND. 47-10	
LND. 10-90	LND. 47-43	
LND. 10-198	LND. 54-94	
LND. 11-119	LND. 55-89	
LND. 12-31	LND. 59-130	
LND. 13-31	LND. 60-8	
LND. 18-158		
LND. 19-68		
LND. 19-192		
LND. 20-76		
LND. 20-77		
LND. 20-111		
LND. 22-184		

WRIGHT FLYER ESTATES  
SEC. 1  
REC. 19-59  
LOTS 1-2

SEE PLAT 29



PREPARED BY: MIAMI COUNTY ENGINEER'S MAP DEPARTMENT  
PAUL P. HUELSKAMP, P.E., P.S., COUNTY ENGINEER  
DATE: JANUARY 29, 2019 MDB  
  
REVISED: October 28, 2022 JZWEZ

\*22  
G12-080442  
  
\*PT. 1  
G12-080419  
MICHAEL T. RANSBOTTOM  
20180R-13613