

# MONROE TWP

MIAMI COUNTY, OHIO

# PLAT 28-C

Section 32, Town 4, Range 6

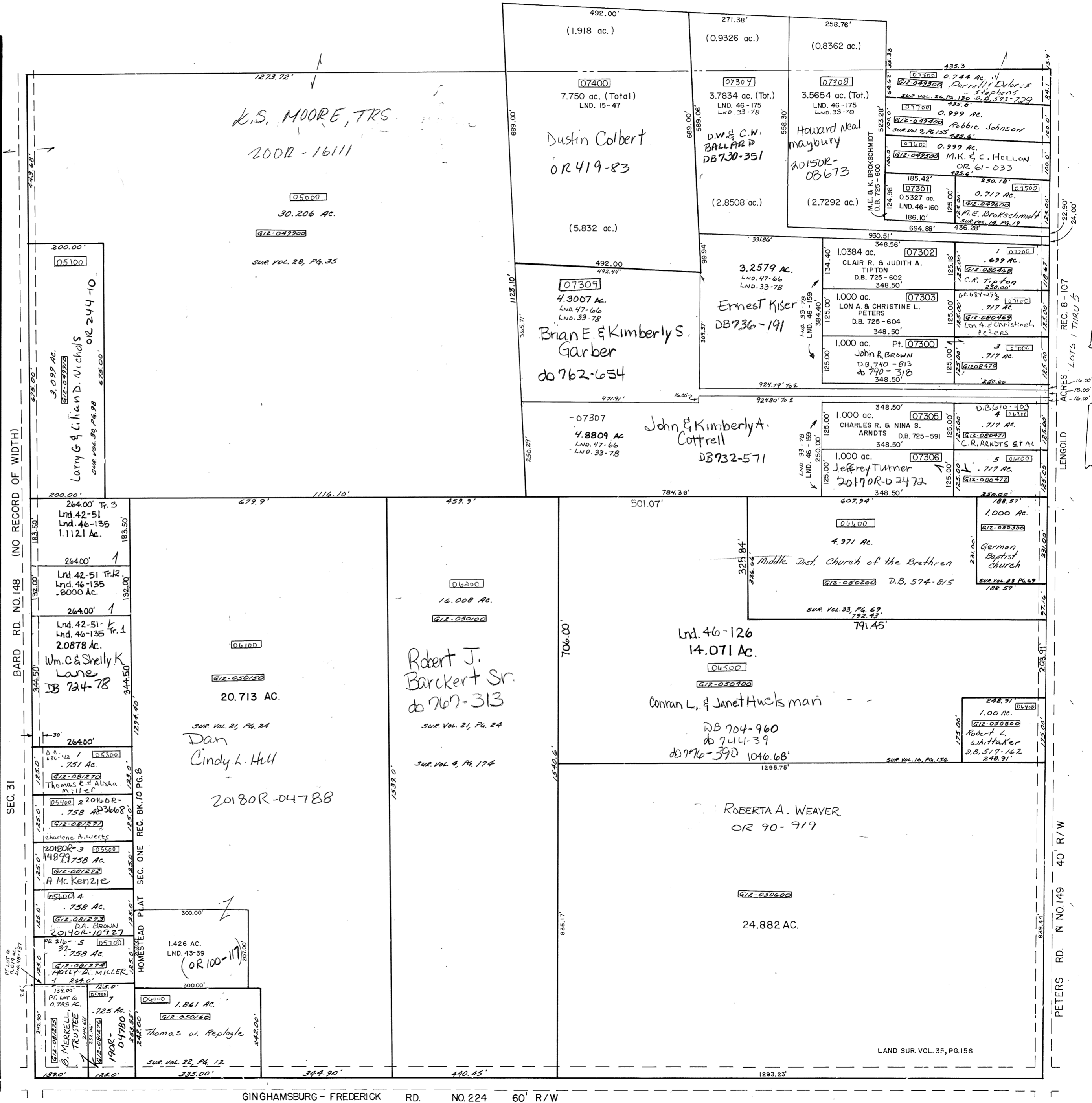
N.W. Quarter

SMDA NUMBER  
G12-M0028C

SCALE: 1" = 200'

### SURVEYS

- SUR. VOL. 2, PG. 58
- SUR. VOL. 4, PG. 174
- SUR. VOL. 9, PG. 155
- SUR. VOL. 10, PG. 17
- SUR. VOL. 14, PG. 19
- SUR. VOL. 15, PG. 47
- SUR. VOL. 16, PG. 156
- SUR. VOL. 21, PG. 24
- SUR. VOL. 22, PG. 12
- SUR. VOL. 26, PG. 130
- SUR. VOL. 30, PG. 98
- SUR. VOL. 33, PG. 69
- SUR. VOL. 33, PG. 78
- SUR. VOL. 35, PG. 156
- LND. 42-51
- LND. 43-39
- Lnd. 46-126
- Lnd. 46-135
- LND. 46-159
- LND. 46-160
- LND. 46-175
- LND. 47-66
- LND. 48-137
- REC. BK. 8, PG. 107
- REC. BK. 8, PG. 107-A
- REC. BK. 10, PG. 8



REVISED 9-22-2005  
D. VENTURA

GINGHAMSBURG - FREDERICK RD. NO. 224 60' R/W

LAND SUR. VOL. 35, PG. 156