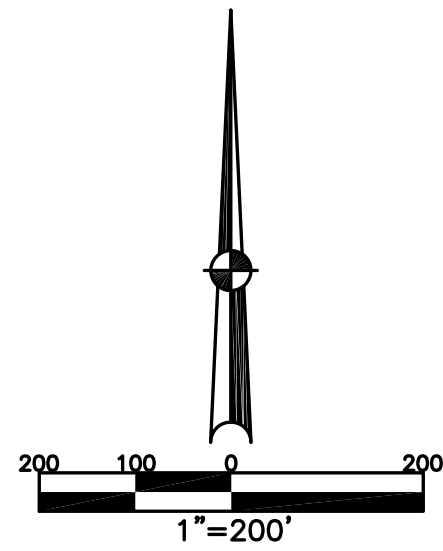


MONROE TWP.  
MIAMI COUNTY, OHIO

SECTION 32 TOWN 4 RANGE 6  
(N.E. QUARTER)

PLAT 28-B



PARCEL NUMBER  
G12-\_\_\_\_\_

LINE LEGEND	
	Blow-up Boundary
	Property Line
	Lot Split Line
	Section Line
	Centerline
	Right-of-Way Line
	IN CORP.
	OUT CORP.
	Corporation Line

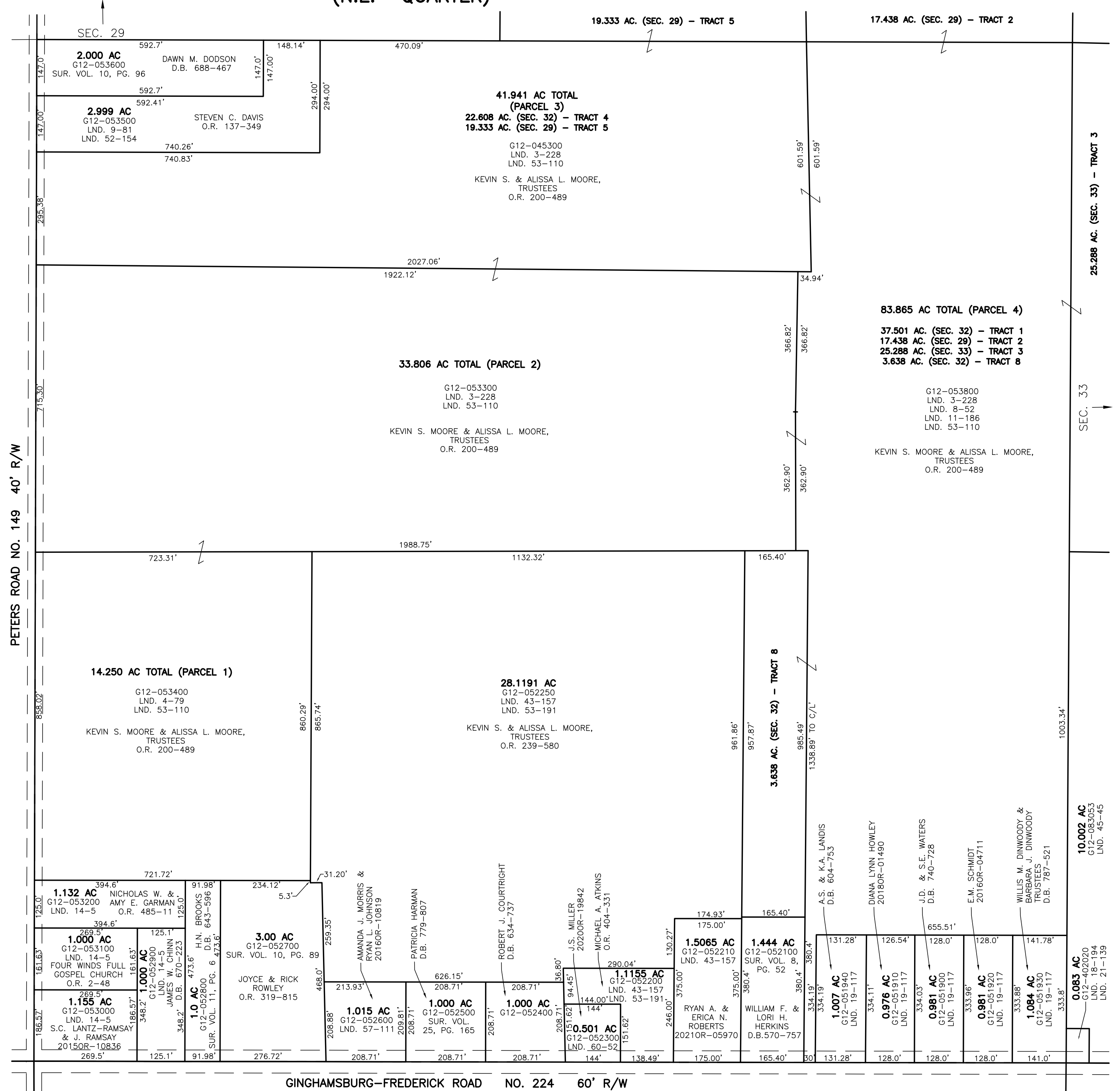
ABBREVIATION LEGEND	
2014OR-00759	= RECORDER'S DOCUMENT NUMBER
OR 406-509	= OFFICIAL RECORD 406 PAGE 509
D.B. 613-172	= DEED BOOK 613, PAGE 172
REC. 15-72	= RECORDER'S PLAT BOOK 15, PAGE 72
LND. 33-15	= LAND SURVEY VOLUME 33, PAGE 15
LOT 19-12	= LOT SURVEY VOLUME 19, PAGE 12
R.R. 8-29	= ROAD RECORD VOLUME 8, PAGE 29
R/W	= RIGHT OF WAY
C	= CENTERLINE
AC.	= ACRES
TWP.	= TOWNSHIP
TR.	= TRACT
IL	= INLOT

SURVEY INDEX	
SUR. VOL. 2, PG. 58	LND. 43-157
SUR. VOL. 3, PG. 228	LND. 52-154
SUR. VOL. 4, PG. 79	LND. 53-110
SUR. VOL. 9, PG. 81	LND. 53-191
SUR. VOL. 10, PG. 89	LND. 57-111
SUR. VOL. 10, PG. 96	LND. 60-52
SUR. VOL. 11, PG. 6	
SUR. VOL. 11, PG. 186	
SUR. VOL. 14, PG. 5	
SUR. VOL. 19, PG. 117	
SUR. VOL. 25, PG. 165	

PREPARED BY: MIAMI COUNTY ENGINEER'S MAP DEPARTMENT  
PAUL P. HUELSKAMP, P.E., P.S., COUNTY ENGINEER

DATE: May 24, 2021 RTACKETT

REVISED: May 24, 2021 RTACKETT



GINGHAMSBURG-FREDERICK ROAD NO. 224 60' R/W