

MONROE TWP

MIAMI COUNTY, OHIO

PLAT 28-A

Section 32, Town 4, Range 6

S.E. Quarter

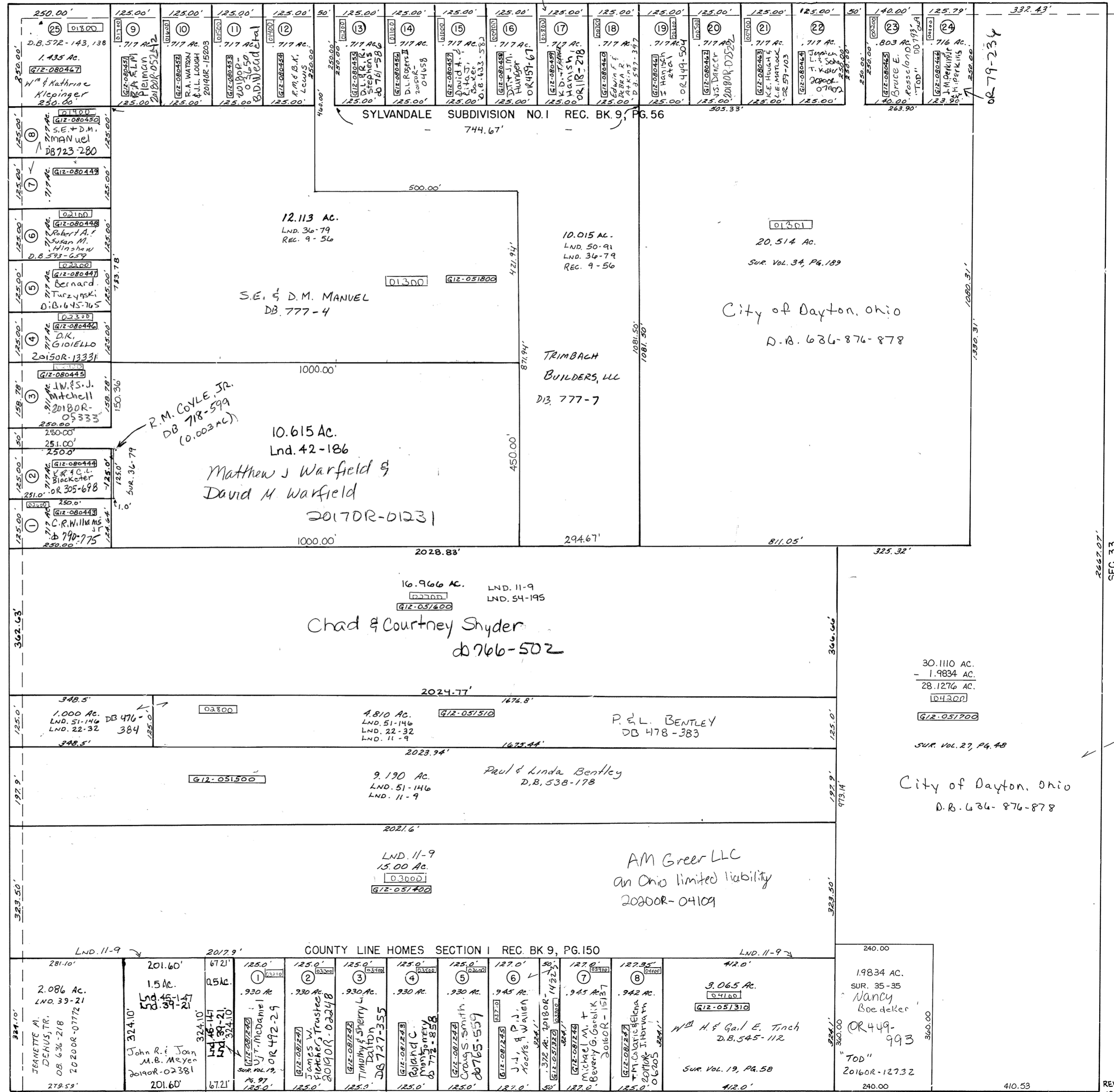
SCALE: 1" = 200'

SURVEYS

- SUR. VOL. 2, PG. 58
- SUR. VOL. 8, PG. 58
- SUR. VOL. 11, PG. 9
- SUR. VOL. 17, PG. 52
- SUR. VOL. 17, PG. 67
- SUR. VOL. 19, PG. 58
- SUR. VOL. 19, PG. 97
- SUR. VOL. 22, PG. 32
- SUR. VOL. 27, PG. 48
- SUR. VOL. 34, PG. 189
- SUR. VOL. 35, PG. 35
- SUR. Vol 36, Pg 79
- LND. 39-21
- Lnd. 42-186
- Lnd. 45-147
- LND. 50-91
- LND. 51-146
- REC. BK. 9, PG. 56
- REC. BK. 9, PG. 56-A
- REC. BK. 9, PG. 142
- REC. BK. 9, PG. 150

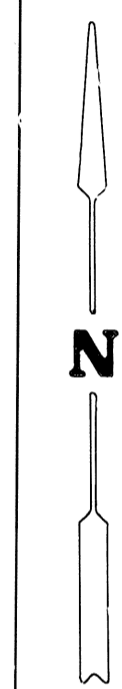
SMDA NUMBER
G12-M0028A-

GINGHAMSBURG - FREDERICK RD. NO. 224 60' R/W



PETERS RD. NO. 149 40' R/W

LIGHTNER RD. (ALL IN MONTGOMERY CO.)



SEC. 33

REVISED: 12-17-2019