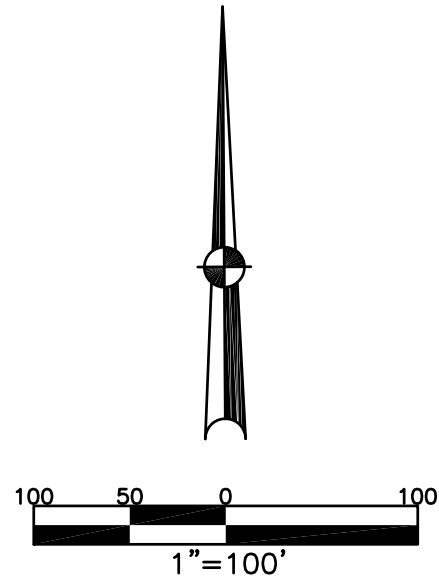


MONROE TWP.
MIAMI COUNTY, OHIO



ABBREVIATION LEGEND	
2014OR-07759	= RECORDER'S DOCUMENT NUMBER OR 257-619 = OFFICIAL RECORD 257 PAGE 619
D.B. 613-172	= DEED BOOK 613, PAGE 172
REC. 15-72	= RECORDER'S PLAT BOOK 15, PAGE 72
LND. 33-15	= LAND SURVEY VOLUME 33, PAGE 15
LOT 19-12	= LOT SURVEY VOLUME 19, PAGE 12
R.R. 8-29	= ROAD RECORD VOLUME 8, PAGE 29
R/W	= RIGHT OF WAY
⊕	= CENTERLINE
AC.	= ACRES
TWP.	= TOWNSHIP
TR.	= TRACT
Ⓢ	= LOT CREATED BY RECORDER'S PLAT

LINE LEGEND	
— — — — —	Blow-up Boundary
—————	Property Line
- - - - -	Lot Split Line
—————	Section Line
—————	Centerline
—————	Right-of-Way Line
///////	Corporation Line

SURVEY INDEX		
LND. 24-3	REC. 11-67	
LND. 37-11	REC. 11-95	
	REC. 12-68	
	REC. 12-100	

EVANSTON ESTATES
SEC. 1
REC. 11-67
LOTS 20-22

SEC. 2
REC. 11-95
LOTS 23-40
44-51

SEC. 4
REC. 12-68
LOTS 78-96

SEC. 6
REC. 12-100
LOTS 113-149

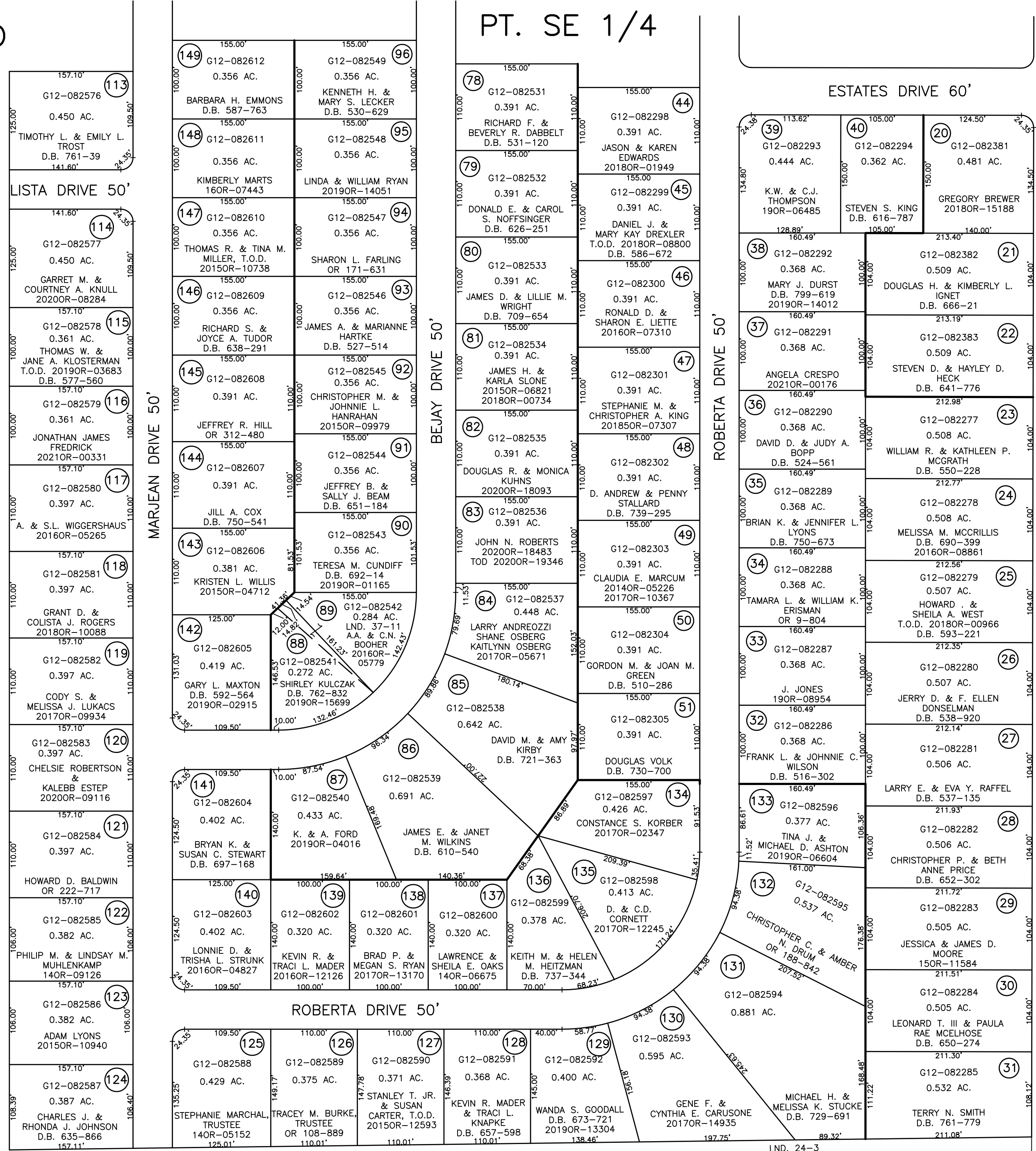
PREPARED BY: MIAMI COUNTY ENGINEER'S MAP DEPARTMENT
PAUL P. HUELSKAMP, P.E., P.S., COUNTY ENGINEER
DATE: DECEMBER 4, 2014 MB

REVISED: January 11, 2021 CSHOUP

SECTION 28 TOWN 4 RANGE 6
PT. SE 1/4

PARCEL NUMBER
G12-_____

PLAT 24-B



LND. 24-3