

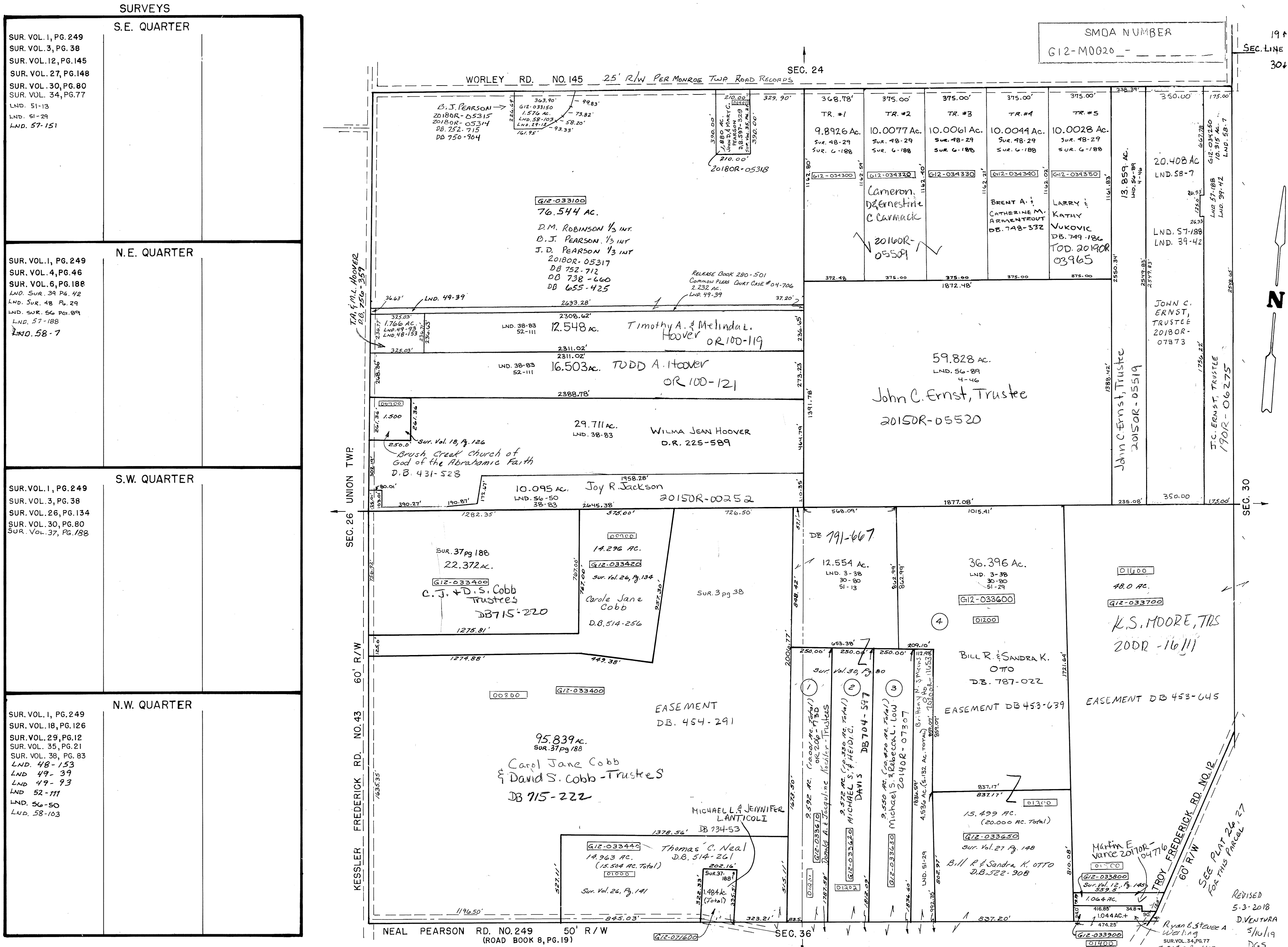
# MONROE TWP.

## MIAMI COUNTY, OHIO

# PLAT 20

### Section 25, Town 6, Range 5

SCALE: 1" = 400'



SURVEYS

S.E. QUARTER

SUR. VOL. 1, PG. 249  
 SUR. VOL. 3, PG. 38  
 SUR. VOL. 12, PG. 145  
 SUR. VOL. 27, PG. 148  
 SUR. VOL. 30, PG. 80  
 SUR. VOL. 34, PG. 77  
 LND. 51-13  
 LND. 51-29  
 LND. 57-151

N.E. QUARTER

SUR. VOL. 1, PG. 249  
 SUR. VOL. 4, PG. 46  
 SUR. VOL. 6, PG. 188  
 LND. SUR. 39 PG. 42  
 LND. SUR. 48 PG. 29  
 LND. SUR. 56 PG. 89  
 LND. 57-188  
 LND. 58-7

S.W. QUARTER

SUR. VOL. 1, PG. 249  
 SUR. VOL. 3, PG. 38  
 SUR. VOL. 26, PG. 134  
 SUR. VOL. 30, PG. 80  
 SUR. VOL. 37, PG. 188

N.W. QUARTER

SUR. VOL. 1, PG. 249  
 SUR. VOL. 18, PG. 126  
 SUR. VOL. 29, PG. 12  
 SUR. VOL. 35, PG. 21  
 SUR. VOL. 38, PG. 83  
 LND. 48-153  
 LND. 49-39  
 LND. 49-93  
 LND. 52-111  
 LND. 56-50  
 LND. 58-103

SMA NUMBER  
 G12-M0020

WORLEY RD. NO. 145 25' R/W PER MONROE TWP ROAD RECORDS

KESSELER FREDERICK RD. NO. 43

SEC. 26 UNION TWP.

60' R/W

NEAL PEARSON RD. NO. 249 50' R/W (ROAD BOOK 8, PG. 19)

19' SEC. LINE 304

SEC. 30



REVISED  
 5-3-2018  
 DIVENTURA  
 5/10/19  
 DGS

SEE PLAT 26, 27 FOR THIS PARCEL

Martin E. Vance 2010R-04776  
 Ryan E. Stever A. Weir 2014OR-14340

BILL R. & SANDRA K. OTTO  
 D.B. 787-022  
 EASEMENT DB 453-639

36.396 AC.  
 LND. 3-38  
 30-80  
 51-29  
 G12-033600

12.554 AC.  
 LND. 3-38  
 30-80  
 51-13  
 DB 791-667

95.839 AC.  
 SUR. 37 PG. 188  
 Carol Jane Cobb  
 & David S. Cobb - Trustees  
 DB 715-222

22.372 AC.  
 SUR. 37 PG. 188  
 C.J. & D.S. Cobb  
 Trustees  
 DB 715-220

29.711 AC.  
 LND. 38-83  
 WILMA JEAN HOOVER  
 D.R. 225-589

16.503 AC.  
 LND. 38-83  
 52-111  
 TODD A. HOOVER  
 OR 100-121

12.548 AC.  
 LND. 38-83  
 52-111  
 Timothy A. & Melinda L. Hoover  
 OR 100-119

76.544 AC.  
 G12-033100  
 D.M. ROBINSON 1/3 INT.  
 B.J. PEARSON 1/3 INT.  
 J.D. PEARSON 1/3 INT.  
 2018OR-05317  
 DB 752-712  
 DB 738-660  
 DB 655-425

9.8926 AC. TR. #1  
 SUR. 48-29  
 SUR. G-188

10.0077 AC. TR. #2  
 SUR. 48-29  
 SUR. G-188

10.0061 AC. TR. #3  
 SUR. 48-29  
 SUR. G-188

10.0044 AC. TR. #4  
 SUR. 48-29  
 SUR. G-188

10.0028 AC. TR. #5  
 SUR. 48-29  
 SUR. G-188

Camron, DeErnestine  
 C Carmack  
 2016OR-05589

BRENT A. CATHERINE M. ARMENTROUT  
 DB. 748-332

LARRY KATHY VUKOVIC  
 DB. 749-186  
 TOD. 2019OR-03965

59.828 AC.  
 LND. 56-89  
 4-46  
 John C. Ernst, Trustee  
 2015OR-05520

20.408 AC.  
 LND. 58-7

JOHN C. ERNST, TRUSTEE  
 2018OR-07873

John C. Ernst, Trustee  
 2015OR-05519

K.S. MOORE, TRUSTEE  
 200R-16111

EASEMENT DB 453-645

MICHAEL L. & JENNIFER L. ANTONIOLI  
 DB 734-53

Thomas C. Neal  
 D.B. 514-261

BILL R. & SANDRA K. OTTO  
 D.B. 522-908