

MONROE TWP.

MIAMI COUNTY, OHIO

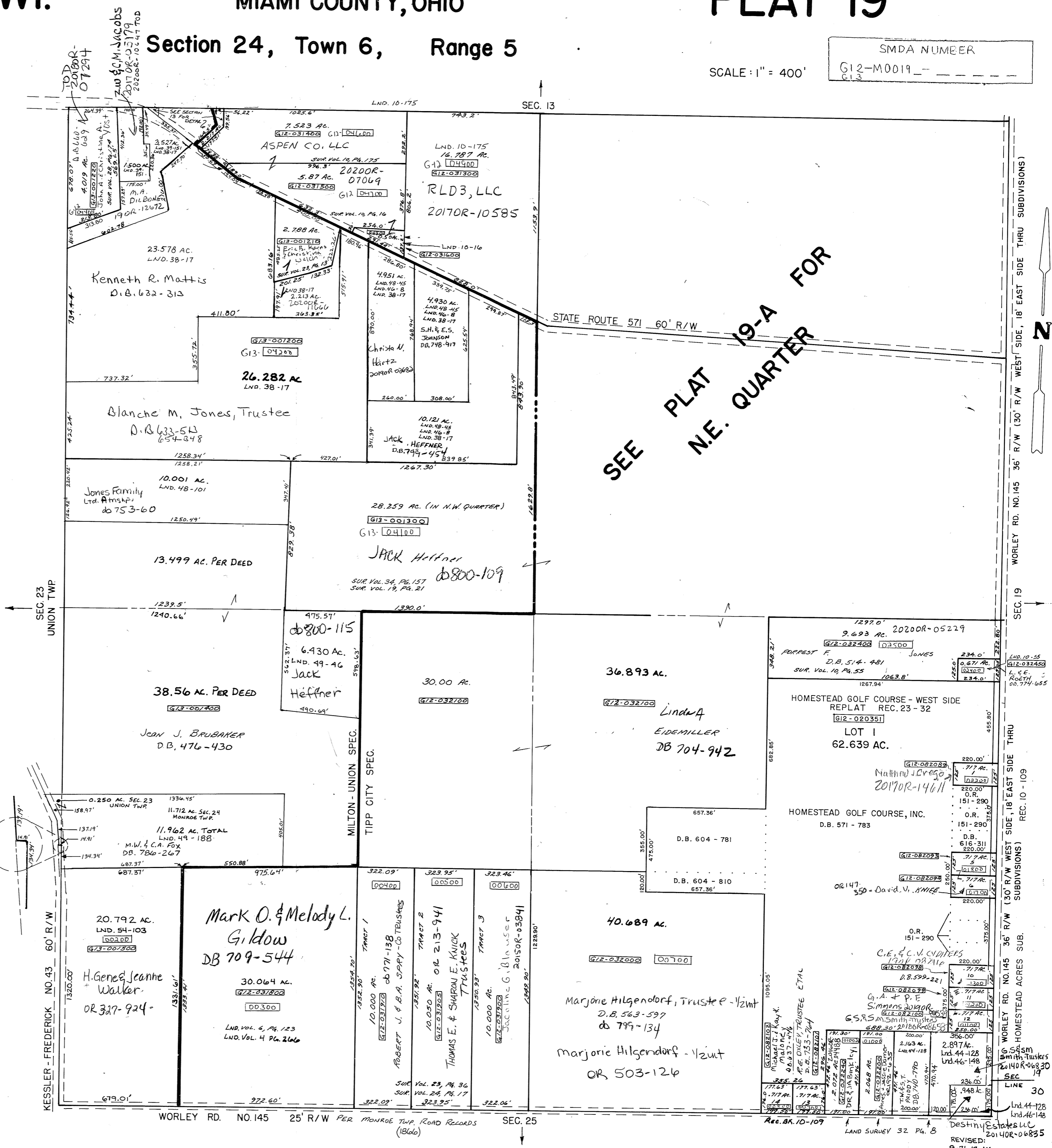
PLAT 19

Section 24, Town 6, Range 5

SCALE: 1" = 400'

SDMA NUMBER
G12-M0019

SURVEYS	
SUR. VOL. 10, PG. 55 SUR. VOL. 21, PG. 155 SUR. VOL. 22, PG. 83 SUR. VOL. 32, PG. 8 Lnd. 46-148 LND. 36-42	S.E. QUARTER REC. BK. 10, PG. 109 REC. BK. 23, PG. 32
SUR. VOL. 4, PG. 92 SUR. VOL. 15, PG. 40 SUR. VOL. 17, PG. 64 SUR. VOL. 19, PG. 21 SUR. VOL. 19, PG. 156 SUR. VOL. 20, PG. 128 SUR. VOL. 26, PG. 26 SUR. VOL. 34, PG. 157	N.E. QUARTER REC. BK. 9, PG. 38 REC. BK. 10, PG. 126
SUR. VOL. 4, PG. 266 SUR. VOL. 6, PG. 123 SUR. VOL. 23, PG. 36 SUR. VOL. 24, PG. 17 LND. 49-46 LND. 49-188 LND. 54-103	S.W. QUARTER
SUR. VOL. 10, PG. 16 SUR. VOL. 10, PG. 175 SUR. VOL. 19, PG. 21 SUR. VOL. 23, PG. 13 SUR. VOL. 28, PG. 174 SUR. VOL. 34, PG. 157 SUR. VOL. 38, PG. 17 SUR. VOL. 39, PG. 151 LND. 40-B LND. 48-45 LND. 48-101	N.W. QUARTER



SEE PLAT 19-A FOR N.E. QUARTER