

MONROE TWP.

MIAMI COUNTY, OHIO

PLAT 14-B

Section 20, Town 4, Range 6

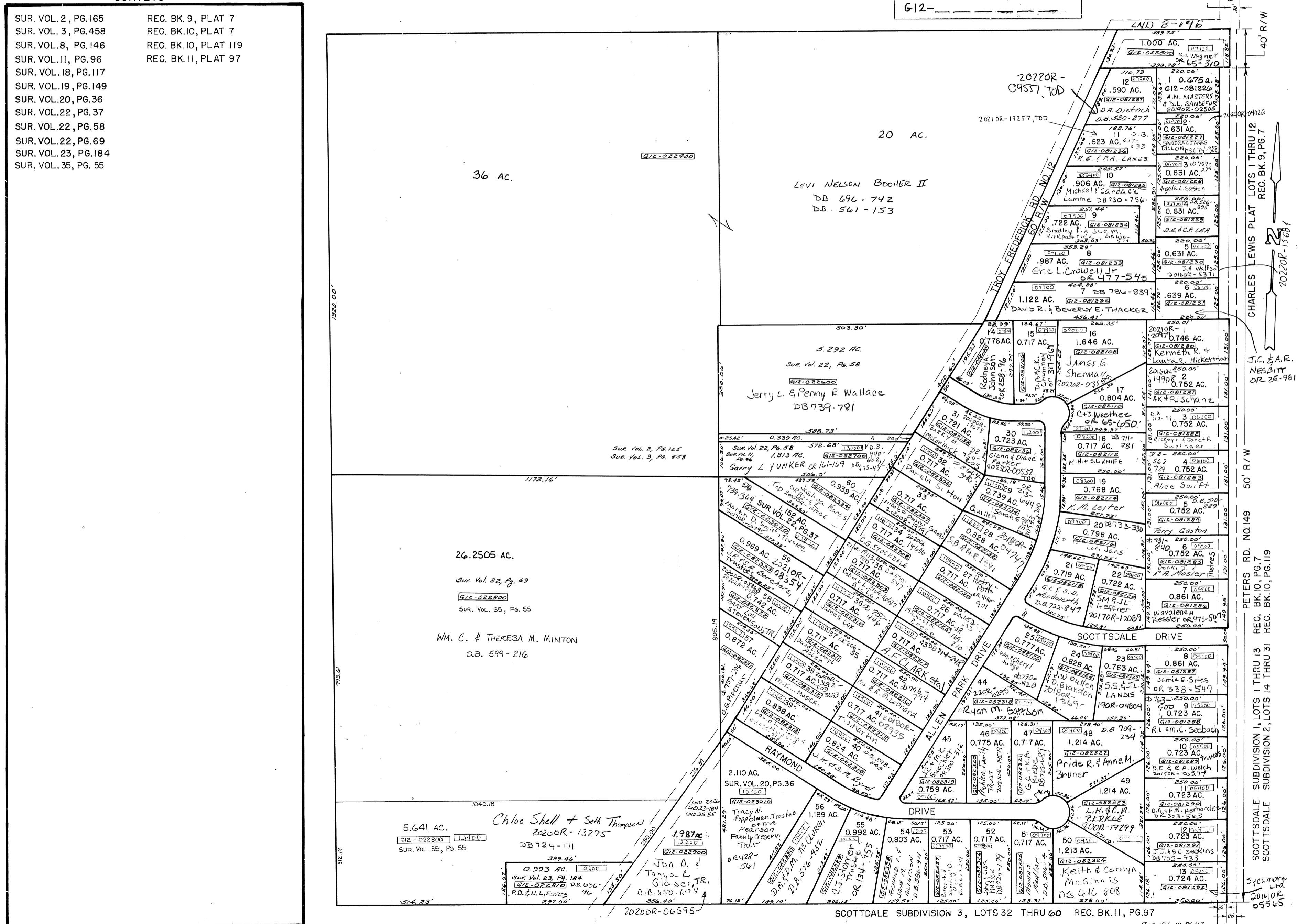
S.W. Quarter SEC. 20

SCALE: 1" = 200'

SURVEYS

- SUR. VOL. 2, PG. 165
- SUR. VOL. 3, PG. 458
- SUR. VOL. 8, PG. 146
- SUR. VOL. 11, PG. 96
- SUR. VOL. 18, PG. 117
- SUR. VOL. 19, PG. 149
- SUR. VOL. 20, PG. 36
- SUR. VOL. 22, PG. 37
- SUR. VOL. 22, PG. 58
- SUR. VOL. 22, PG. 69
- SUR. VOL. 23, PG. 184
- SUR. VOL. 35, PG. 55
- REC. BK. 9, PLAT 7
- REC. BK. 10, PLAT 7
- REC. BK. 10, PLAT 119
- REC. BK. 11, PLAT 97

PARCEL NUMBER
G12-_____



SCOTSDALE SUBDIVISION 3, LOTS 32 THRU 60 REC. BK. 11, PG. 97

REVISED 01/18/23 JA

60' R/W
40' R/W
50' R/W
PETERS RD. NO. 149 REC. BK. 10, PG. 7
SCOTSDALE SUBDIVISION 1, LOTS 1 THRU 13 REC. BK. 10, PG. 7
SCOTSDALE SUBDIVISION 2, LOTS 14 THRU 31 REC. BK. 10, PG. 119
CHARLES LEWIS PLAT LOTS 1 THRU 12 REC. BK. 9, PG. 7
J.C. & A.R. NESBITT OR 25-981
Sycamore Ltd 2014 OR 05365