

# MONROE TWP.

# MIAMI COUNTY, OHIO

# PLAT II-A

## Section 17, Town 4, Range 6

## S.E. Quarter

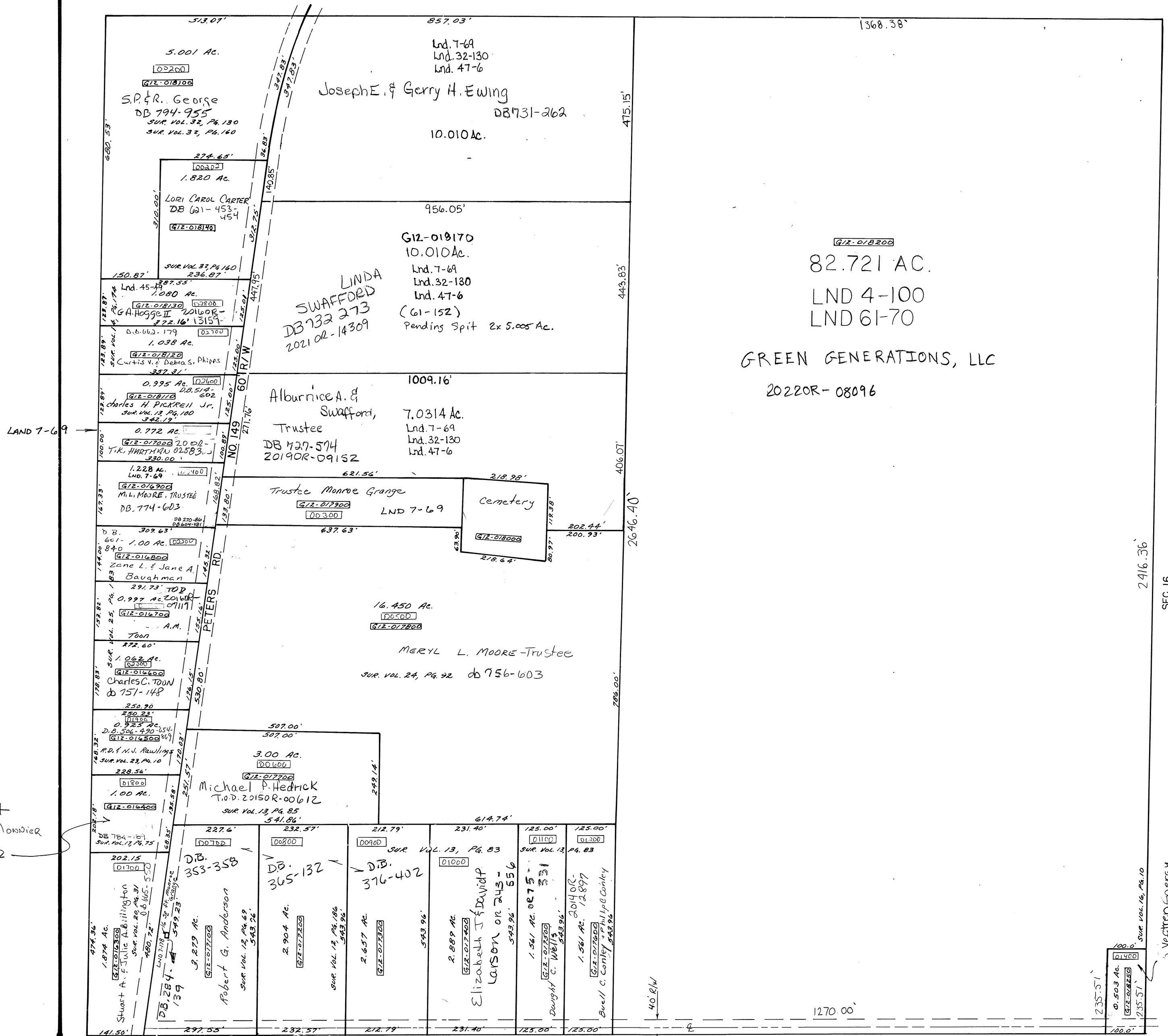
SCALE: 1" = 200'

PARCEL NUMBER  
G12- - - - -

### SURVEYS

- SUR. VOL. 4, PG. 100
- SUR. VOL. 7, PG. 69
- SUR. VOL. 7, PG. 178
- SUR. VOL. 12, PG. 69
- SUR. VOL. 12, PG. 186
- SUR. VOL. 13, PG. 83
- SUR. VOL. 13, PG. 85
- SUR. VOL. 13, PG. 100
- SUR. VOL. 14, PG. 174
- SUR. VOL. 16, PG. 10
- SUR. VOL. 17, PG. 75
- SUR. VOL. 20, PG. 31
- SUR. VOL. 23, PG. 10
- SUR. VOL. 24, PG. 92
- SUR. VOL. 25, PG. 183
- SUR. VOL. 32, PG. 130
- SUR. VOL. 32, PG. 160
- Lnd. 45-44
- Lnd. 47-6

REC. BK. 13, PG. 142



Sandra Kay +  
Delbert J. Mondier  
20210R-10922

