

# MONROE TWP.

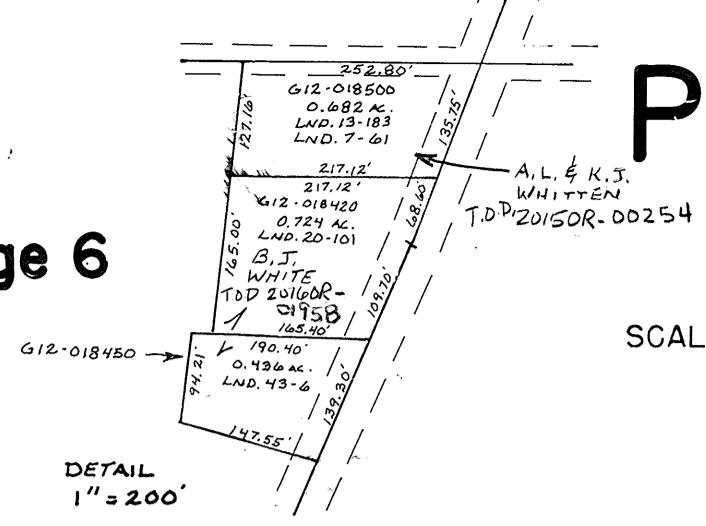
MIAMI COUNTY, OHIO

# PLAT II

Section 17, Town 4, Range 6

SMDA NUMBER  
G12-M0011-\_\_\_\_\_

SCALE: 1" = 400'



**SURVEYS**  
S.E. QUARTER  
SEE FLAT II-A FOR SURVEYS  
IN THIS QUARTER

N.E. QUARTER  
SUR. VOL. 7, PG. 61  
SUR. VOL. 13, PG. 183  
SUR. VOL. 20, PG. 101  
LND. 43-6  
LND. 54-125

S.W. QUARTER  
SUR. VOL. 27, PG. 78  
LND. 40-48  
LND. 42-111  
REC. BK. 8, PG. 123

N.W. QUARTER

Kessler-Cowlesville Rd. No. 40 RD. REC. 5-97 33' R/W

Wilma Mohr Farms, Ltd  
162.0 Ac.  
03260  
G12-016100  
DB 756-433

Jean M. Hannan - 1/2 int } DB 649-628  
Betty J. White - 1/2 int } 697-225  
770-839

TOD's - 20160R-01956 - Jean's  
20160R-01957 - Betty's  
55.638 Ac.  
G12-018400  
SURVEY AGREEMENT  
DATED 6-15-1999  
D.V.

Donald L. Stine  
D.B. 555-449  
98.943 Ac.  
G12-018300  
LND. 54-125

6.75 Ac.  
G12-016100

Watson Family Farm, LLC  
OR 49-078

75.000 Ac.  
LND. 40-48

10.5429 Ac.	10.5425 Ac.	10.5429 Ac.	10.5425 Ac.	10.5429 Ac.
A	B	C	D	E
Kenneth W. & Melissa R. Clack DB 716-388	Wilfred A. & Helena C. Bruns D. B. 676-831	Christian Family Fellowship Ministry OR 299-561	Christian Family Fellowship Ministry D. B. 675-749	

SEE FLAT II-A FOR S.E. QUARTER

KERR RD. NO. 152 40' R/W  
MONROE TWP ROAD RECORDS (1843)  
SOUTH R/W IS SECTION LINE

STATE ROUTE NO. 571 60' R/W  
REC. 21-15  
CENTERLINE PLAT

