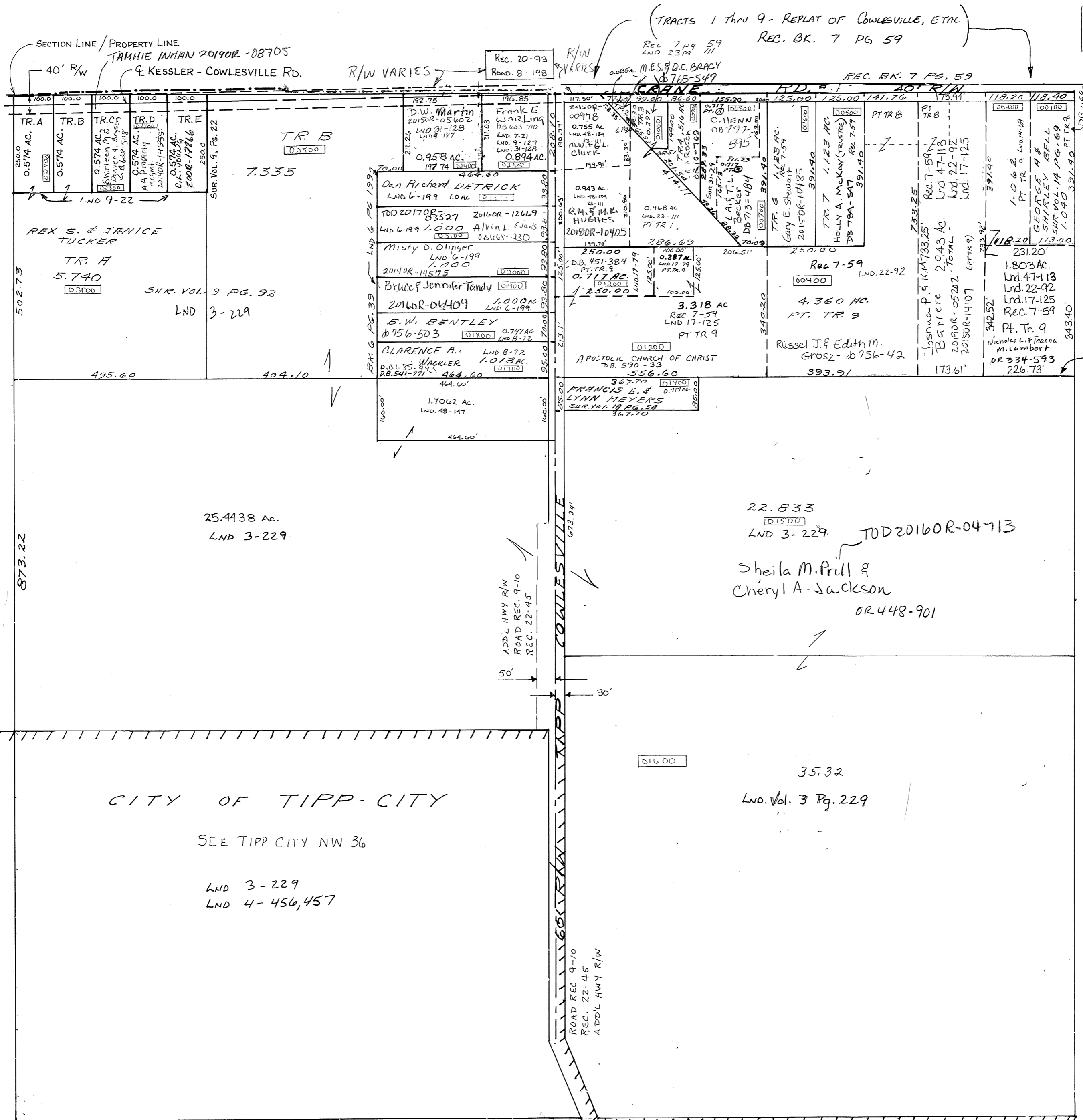


SMDA NUMBER  
G12-M0009B



NOTE:  
 THESE DESCRIPTIONS MUST  
 CALL FOR TRACT NUMBERS  
 OR PART TRACT NUMBERS  
 AS PER THE REPLAT OF  
 COWLESVILLE AND ADJ. TERRITORY  
 AS SHOWN ON REC. BK. 7 PG. 59  
 THIS INCLUDES FROM TIPP-COWLESVILLE  
 ROAD TO EAST LINE OF SECTION  
 AND CRANE ROAD SOUTH TO THIS  
 LINE EXTENDED WEST TO ROAD.  
 D.V.  
 1-5-2001

CITY OF TIPP-CITY  
 SEE TIPP CITY NW 36  
 LND 3-229  
 LND 4-456,457

22.833  
 LND 3-229  
 TOD 2016OR-04713  
 Sheila M. Prill &  
 Cheryl A. Jackson  
 OR 448-901

35.32  
 LND. Vol. 3 Pg. 229

REVISED: 2-17-2011  
 DS