

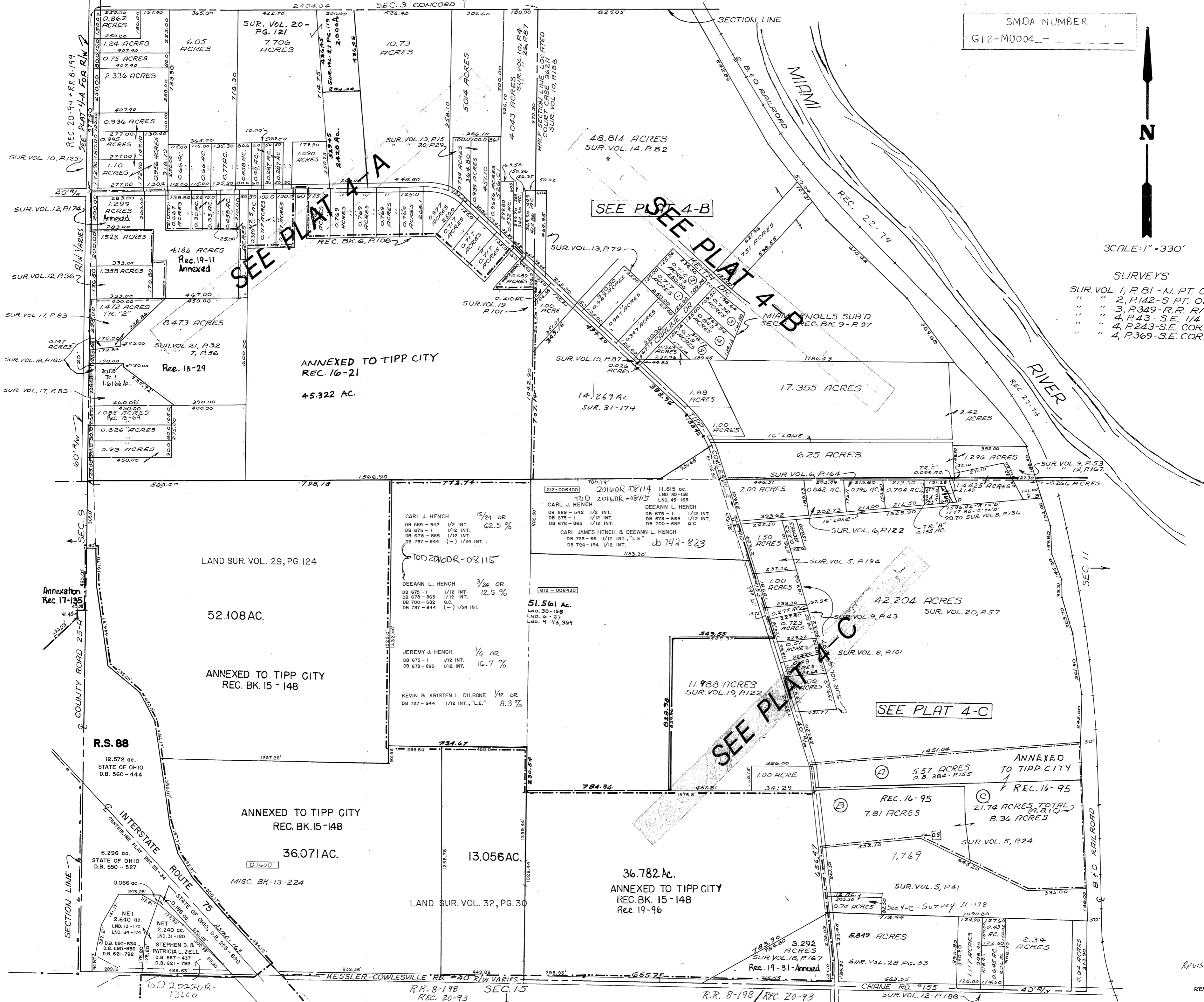
SMDA NUMBER
G12-M0004



SCALE: 1" = 330'

SURVEYS

- SUR. VOL. 1, P. 81 - N. PT. OF SEC.
- " " 2, P. 142 - S. PT. OF SEC.
- " " 3, P. 349 - R.R. R/W
- " " 4, P. 43 - S.E. 1/4
- " " 4, P. 243 - S.E. COR. S.E. 1/4
- " " 4, P. 369 - S.E. COR. N.E. 1/4



CARL J. HENCH 15/24 OR
DB 589 - 542 1/2 INT. 62.5 %
DB 675 - 1 1/12 INT.
DB 678 - 865 1/12 INT.
DB 737 - 944 (-) 1/24 INT.

DEEANN L. HENCH 3/24 OR
DB 675 - 1 1/12 INT. 12.5 %
DB 678 - 865 1/12 INT.
DB 700 - 682 Q.C.
DB 737 - 944 (-) 1/24 INT.

JEREMY J. HENCH 1/6 OR
DB 675 - 1 1/12 INT. 16.7 %
DB 678 - 865 1/12 INT.

KEVIN & KRISTEN L. DILBONE 1/2 OR
DB 737 - 944 1/12 INT., "L.E." 8.3 %

612-006400 201608-08114 11,615 ac.
LND. 30-158
LND. 45-169
CARL J. HENCH DEEANN L. HENCH
DB 589 - 542 1/2 INT. DB 675 - 1 1/12 INT.
DB 675 - 1 1/12 INT. DB 678 - 865 1/12 INT.
DB 678 - 865 1/12 INT. DB 700 - 682 Q.C.
CARL JAMES HENCH & DEEANN L. HENCH
DB 723 - 66 1/12 INT., "L.E."
DB 724 - 194 1/12 INT. db 742-823

612-006430
51,561 ac.
LND. 30-158
LND. 6-27
LND. 41-43,369