

MONROE TOWNSHIP
MIAMI COUNTY, OHIO

SECTION 9 TOWN 4 RANGE 6
PT. NORTHEAST QUARTER

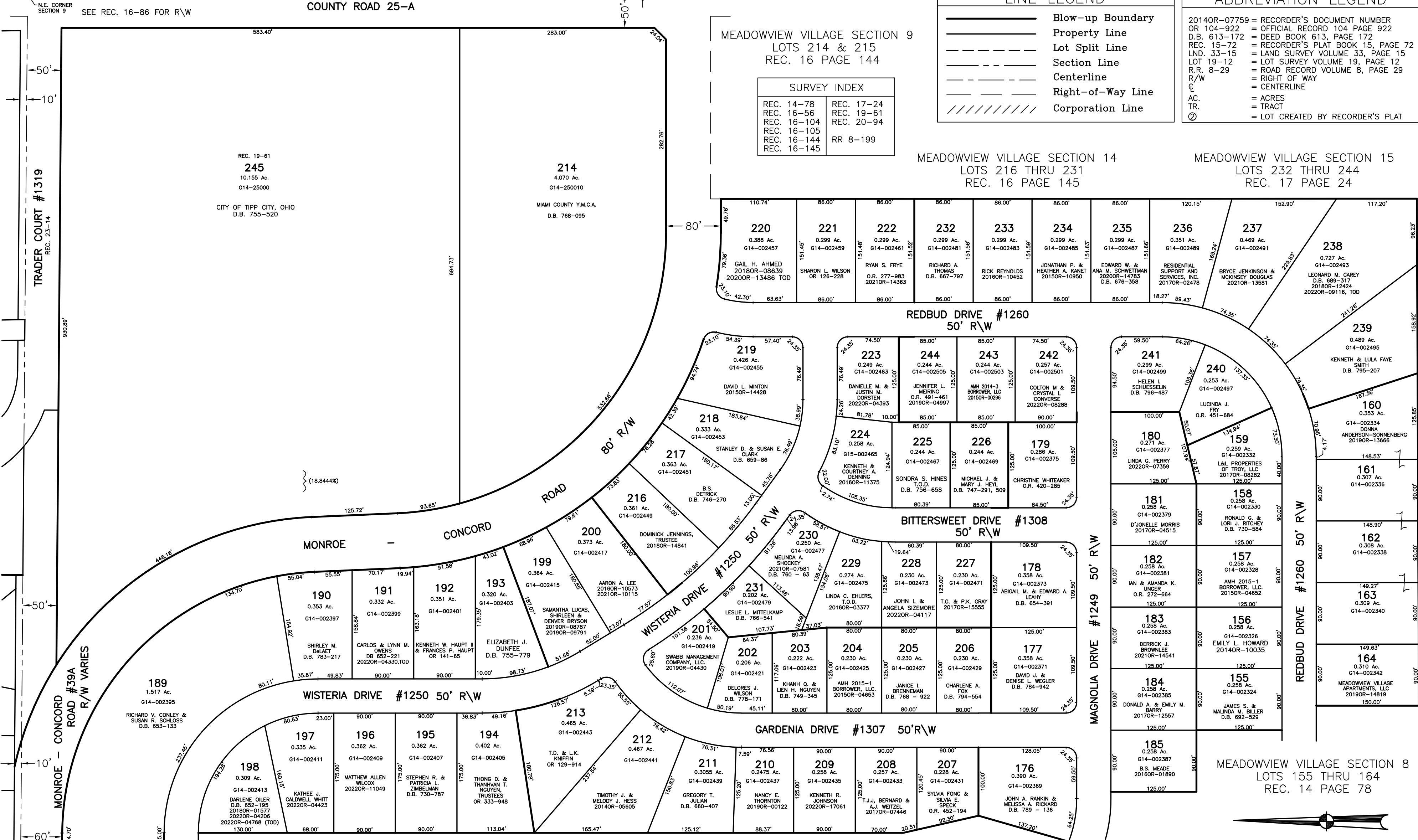
PLAT 3-H

PARCEL NUMBER
G14-_____

REC. 20-94 ROAD RECORD 8-199

COUNTY ROAD 25-A

SEE REC. 16-86 FOR R/W



MEADOWVIEW VILLAGE SECTION 9
LOTS 214 & 215
REC. 16 PAGE 144

SURVEY INDEX	
REC. 14-78	REC. 17-24
REC. 16-56	REC. 19-61
REC. 16-104	REC. 20-94
REC. 16-105	RR 8-199
REC. 16-144	
REC. 16-145	

LINE LEGEND	
	Blow-up Boundary
	Property Line
	Lot Split Line
	Section Line
	Centerline
	Right-of-Way Line
	Corporation Line

ABBREVIATION LEGEND	
20140R-07759	= RECORDER'S DOCUMENT NUMBER
OR 104-922	= OFFICIAL RECORD 104 PAGE 922
D.B. 613-172	= DEED BOOK 613, PAGE 172
REC. 15-72	= RECORDER'S PLAT BOOK 15, PAGE 72
LND. 33-15	= LAND SURVEY VOLUME 33, PAGE 15
LOT 19-12	= LOT SURVEY VOLUME 19, PAGE 12
R.R. 8-29	= ROAD RECORD VOLUME 8, PAGE 29
R/W	= RIGHT OF WAY
CL	= CENTERLINE
AC.	= ACRES
TR.	= TRACT
Ⓢ	= LOT CREATED BY RECORDER'S PLAT

MEADOWVIEW VILLAGE SECTION 14
LOTS 216 THRU 231
REC. 16 PAGE 145

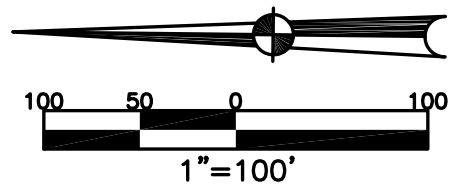
MEADOWVIEW VILLAGE SECTION 15
LOTS 232 THRU 244
REC. 17 PAGE 24

MEADOWVIEW VILLAGE SECTION 12
LOTS 189 THRU 198
REC. 16 PAGE 104

MEADOWVIEW VILLAGE SECTION 13
LOTS 199 THRU 213
REC. 16 PAGE 105

MEADOWVIEW VILLAGE SECTION 11
LOTS 176 THRU 185
REC. 16 PAGE 56

MEADOWVIEW VILLAGE SECTION 8
LOTS 155 THRU 164
REC. 14 PAGE 78



PREPARED BY: MIAMI COUNTY ENGINEER'S MAP DEPARTMENT
DATE: APRIL, 1993
REVISED: December 2, 2022 M5TORMS