

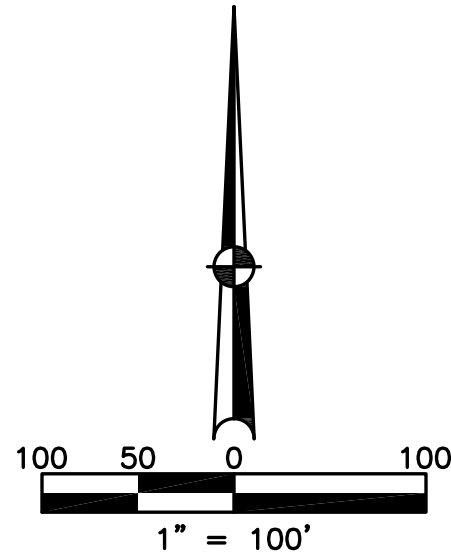
MONROE TOWNSHIP
MIAMI COUNTY, OHIO

SECTION 9 TOWN 4 RANGE 6
Part of NORTHEAST QUARTER

PARCEL NUMBER
G14-_____

PLAT 3-G

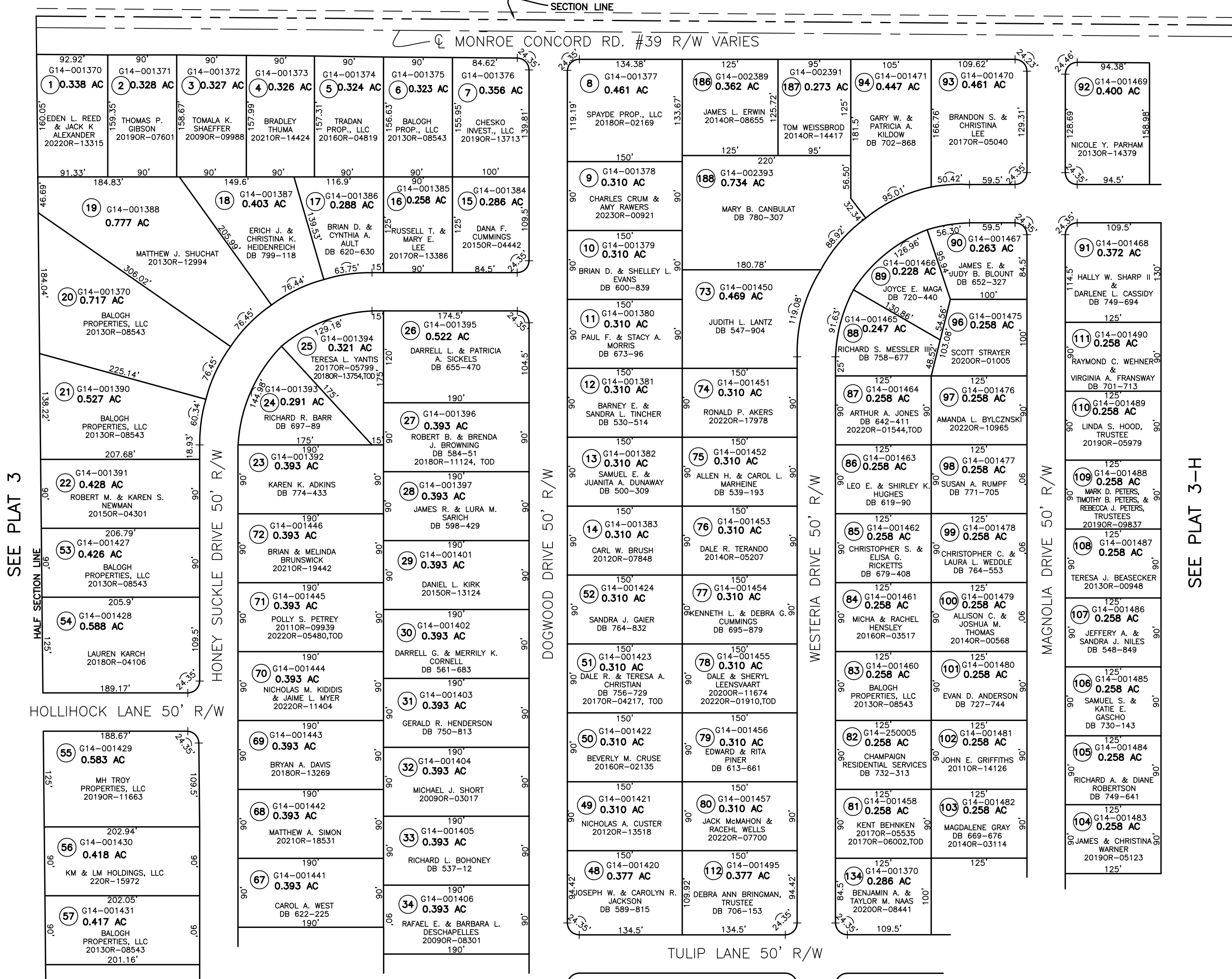
SEE CONCORD TWP. PLAT 5



ABBREVIATION LEGEND	
2014OR-00759	= RECORDER'S DOCUMENT NUMBER OR 406-509 = OFFICIAL RECORD 406 PAGE 509
D.B. 613-172	= DEED BOOK 613, PAGE 172
REC. 15-72	= RECORDER'S PLAT BOOK 15, PAGE 72
LND. 33-15	= LAND SURVEY VOLUME 33, PAGE 15
LOT 19-12	= LOT SURVEY VOLUME 19, PAGE 12
R.R. 8-29	= ROAD RECORD VOLUME 8, PAGE 29
R/W	= RIGHT OF WAY
C	= CENTERLINE
AC.	= ACRES
TWP.	= TOWNSHIP
TR.	= TRACT
#	= LOT CREATED BY RECORD PLAT

LINE LEGEND	
	Blow-up Boundary
	Property Line
	Lot Split Line
	Section Line
	Centerline
	Right-of-Way Line
	Corporation Line

SURVEY INDEX	
MEADOWVIEW VILLAGE SUBDIVISION	
SECTION 1	REC. 11-65
LOTS 1 THRU 28	
SECTION 2	REC. 11-131
LOTS 29 THRU 52	
SECTION 3	REC. 11-135
LOTS 53 THRU 72	
SECTION 4	REC. 12-60
LOTS 73 THRU 95	
SECTION 5	REC. 12-95
LOTS 96 THRU 111	
SECTION 6	REC. 12-128
LOTS 112 THRU 134	
SECTION 7	REC. 16-100
RE-PLAT LOT 95	TO LOTS 186 THRU 188



SEE PLAT 3

SEE PLAT 3-H

SEE PLAT 3-F

PREPARED BY: MIAMI COUNTY ENGINEER'S MAP DEPARTMENT
PAUL P. HUELSKAMP, P.E., P.S., COUNTY ENGINEER
DATE: JUNE 17, 2022 MSTORMS
REVISED: Jan. 27, 2023 MSTORMS