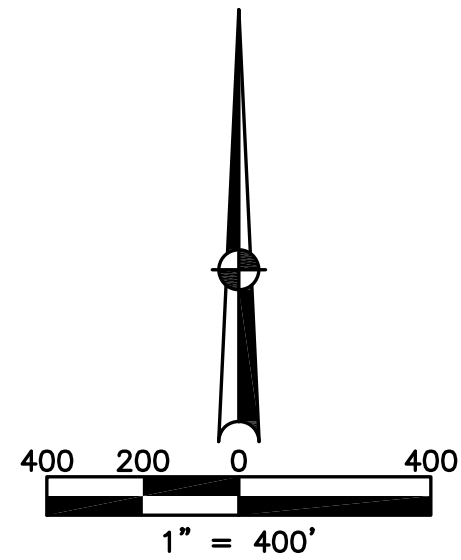


MONROE TOWNSHIP  
MIAMI COUNTY, OHIO

SECTION 9 TOWN 4 RANGE 6

PARCEL NUMBER  
G12-  
G14-

PLAT 3



**ABBREVIATION LEGEND**

2014OR-00759	= RECORDER'S DOCUMENT NUMBER OR 406-509
D.B. 613-172	= DEED BOOK 613, PAGE 172
REC. 15-72	= RECORDER'S PLAT BOOK 15, PAGE 72
LND. 33-15	= LAND SURVEY VOLUME 33, PAGE 15
LOT 19-12	= LOT SURVEY VOLUME 19, PAGE 12
R.R. 8-29	= ROAD RECORD VOLUME 8, PAGE 29
R/W	= RIGHT OF WAY
CL	= CENTERLINE
AC.	= ACRES
TWP.	= TOWNSHIP
TR.	= TRACT
IL	= INLOT

**LINE LEGEND**

	Blow-up Boundary
	Property Line
	Lot Split Line
	Section Line
	Centerline
	Right-of-Way Line
	Corporation Line

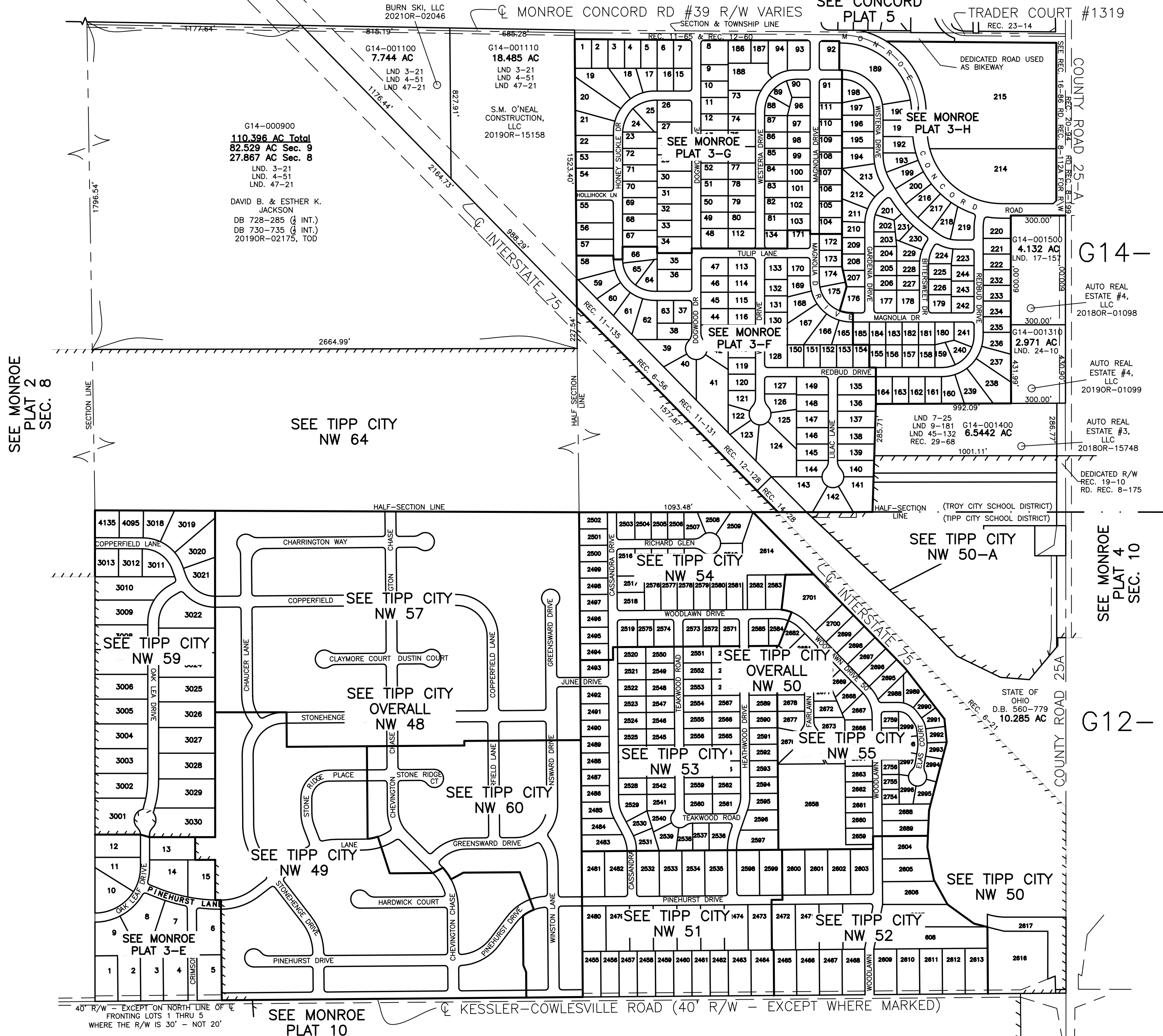
**SURVEY INDEX**

LND. 1-207	REC. 6-21	RD. REC. 5-269
LND. 2-139	REC. 6-56	RD. REC. 8-112A
LND. 3-21	REC. 11-65	RD. REC. 8-175
LND. 4-51	REC. 11-131	RD. REC. 8-199
LND. 4-437	REC. 11-135	
LND. 6-21	REC. 12-60	
LND. 6-56	REC. 12-128	
LND. 7-25	REC. 14-28	
LND. 8-191	REC. 15-36	
LND. 9-26	REC. 15-89	
LND. 9-42	REC. 16-62	
LND. 9-115	REC. 16-86	
LND. 9-144	REC. 17-58	
LND. 9-181	REC. 17-135	
LND. 10-72	REC. 19-10	
LND. 11-34	REC. 19-74	
LND. 11-36	REC. 19-120	
LND. 11-65	REC. 20-94	
LND. 11-100	REC. 23-14	
LND. 11-131	REC. 26-93	
LND. 11-135	REC. 29-68	
LND. 12-60		
LND. 12-63		
LND. 12-95		
LND. 12-119		
LND. 12-120		
LND. 12-128		
LND. 12-181		
LND. 13-75		
LND. 13-135		
LND. 14-28		
LND. 14-162		
LND. 15-67		
LND. 15-100		
LND. 16-131		
LND. 17-157		
LND. 24-10		
LND. 29-117		
LND. 31-69		
LND. 32-142		
LND. 35-166		
LND. 40-134		
LND. 41-26		
LND. 45-132		
LND. 47-21		

PREPARED BY: MIAMI COUNTY ENGINEER'S MAP DEPARTMENT  
PAUL P. HUELSKAMP, P.E., P.S., COUNTY ENGINEER

DATE: AUG. 29, 2022 MSTORMS

REVISED: Sep. 16, 2022 MSTORMS



40' R/W - EXCEPT ON NORTH LINE OF FRONTING LOTS 1 THRU 5 WHERE THE R/W IS 30' - NOT 20'

SEE MONROE PLAT 10

KESSLER-COWLESVILLE ROAD (40' R/W - EXCEPT WHERE MARKED)