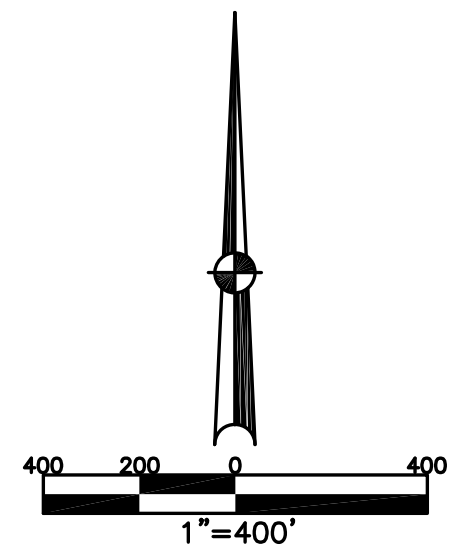


MONROE TWP.  
MIAMI COUNTY, OHIO

SECTION 7 TOWN 4 RANGE 6

PLAT 1



PARCEL NUMBER  
G12- \_\_\_\_\_  
G14- \_\_\_\_\_

**ABBREVIATION LEGEND**

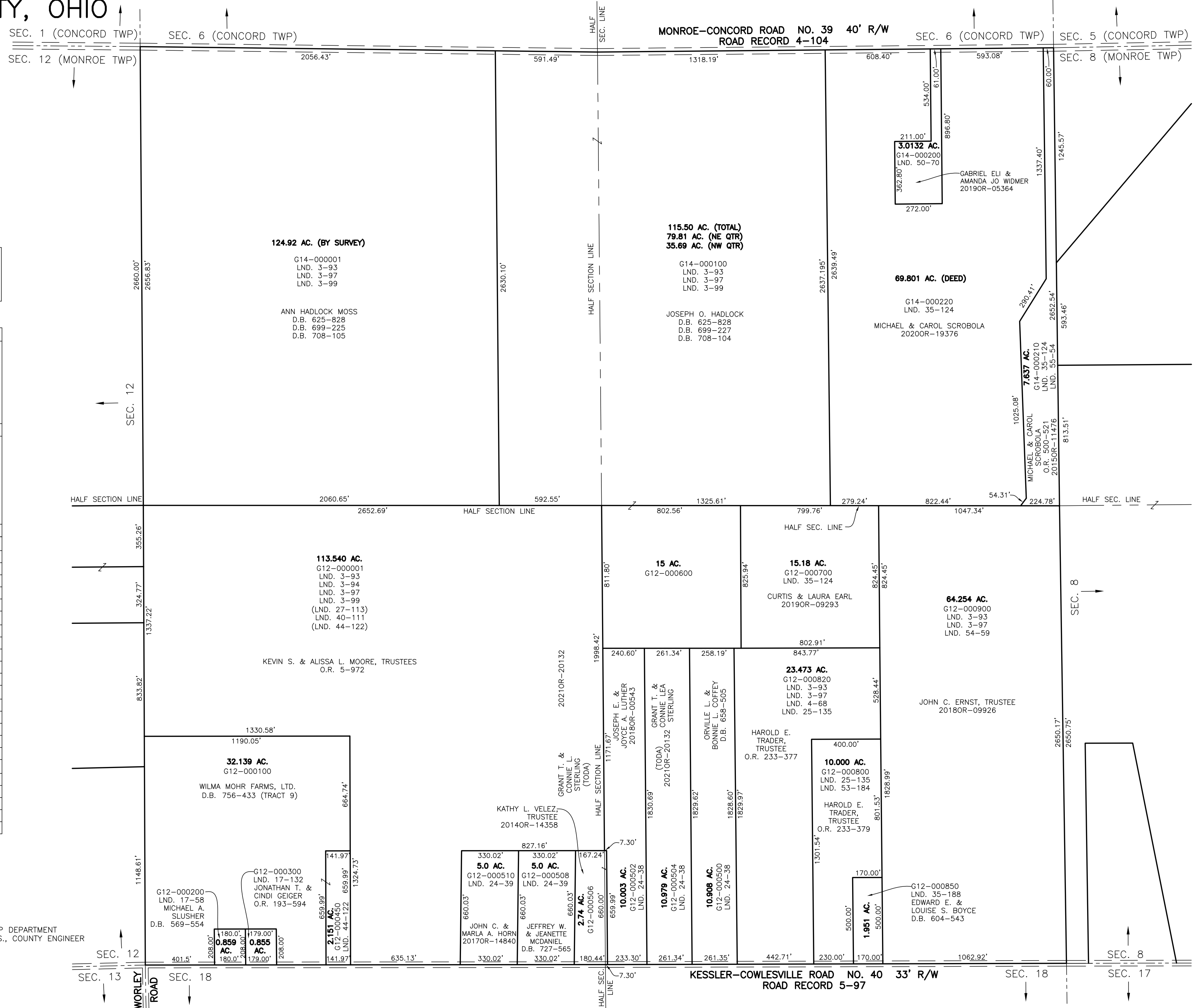
20140R-00759	=	RECORDER'S DOCUMENT NUMBER
OR 406-509	=	OFFICIAL RECORD 406 PAGE 509
D.B. 613-172	=	DEED BOOK 613, PAGE 172
REC. 15-72	=	RECORDER'S PLAT BOOK 15, PAGE 72
LND. 33-15	=	LAND SURVEY VOLUME 33, PAGE 15
LOT 19-12	=	LOT SURVEY VOLUME 19, PAGE 12
R.R. 8-29	=	ROAD RECORD VOLUME 8, PAGE 29
R/W	=	RIGHT OF WAY
C	=	CENTERLINE
AC.	=	ACRES
TWP.	=	TOWNSHIP
TR.	=	TRACT
IL	=	INLOT

**LINE LEGEND**

—	Blow-up Boundary
—	Property Line
- - -	Lot Split Line
- - -	Section Line
- - -	Centerline
- - -	Right-of-Way Line
////	Corporation Line

**SURVEY INDEX**

NORTHEAST QUARTER	
LND. 3-93	LND. 55-54
LND. 3-97	
LND. 3-99	
LND. 35-124	
LND. 50-70	
SOUTHEAST QUARTER	
LND. 3-93	LND. 25-135
LND. 3-97	LND. 35-124
LND. 3-99	LND. 35-188
LND. 4-68	LND. 53-184
LND. 24-38	LND. 54-59
SOUTHWEST QUARTER	
LND. 3-93	LND. 17-132
LND. 3-94	LND. 24-39
LND. 3-97	LND. 27-113
LND. 3-99	LND. 40-111
LND. 17-58	LND. 44-122
NORTHWEST QUARTER	
LND. 3-93	
LND. 3-97	
LND. 3-99	



PREPARED BY: MIAMI COUNTY ENGINEER'S MAP DEPARTMENT  
PAUL P. HUELSKAMP, P.E., P.S., COUNTY ENGINEER  
DATE: June 16, 2021 RTACKETT  
REVISED: November 22, 2021 JZWEZ