

SECTION 17 & 20
TOWN 6
RANGE 5

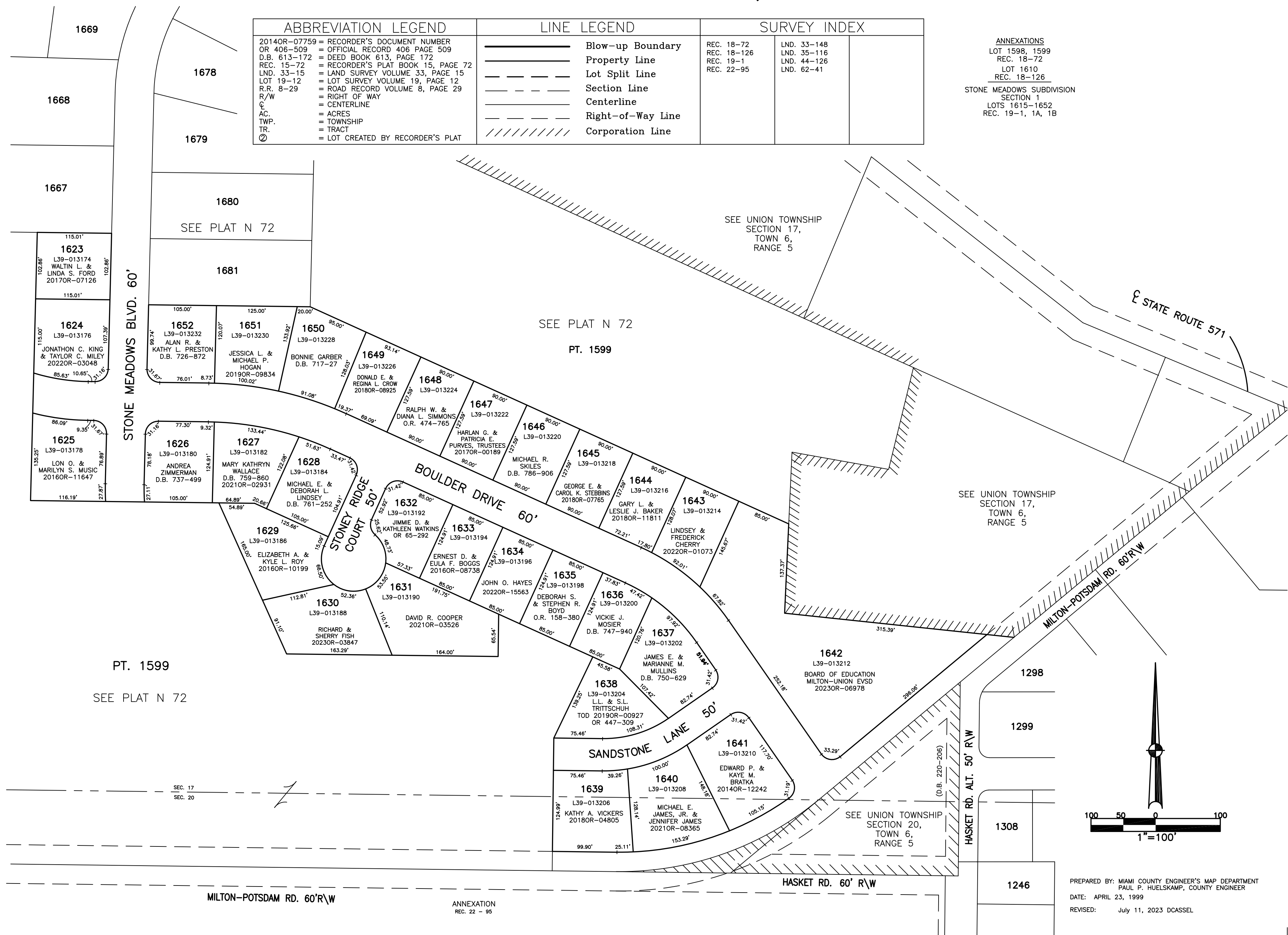
VILLAGE OF WEST MILTON
MIAMI COUNTY, OHIO

PARCEL NUMBER
L39 - _____

PLAT N 73

ABBREVIATION LEGEND	LINE LEGEND	SURVEY INDEX
2014OR-07759 = RECORDER'S DOCUMENT NUMBER	Blow-up Boundary	REC. 18-72
OR 406-509 = OFFICIAL RECORD 406 PAGE 509	Property Line	REC. 18-126
D.B. 613-172 = DEED BOOK 613, PAGE 172	Lot Split Line	REC. 19-1
REC. 15-72 = RECORDER'S PLAT BOOK 15, PAGE 72	Section Line	REC. 22-95
LND. 33-15 = LAND SURVEY VOLUME 33, PAGE 15	Centerline	LND. 33-148
LOT 19-12 = LOT SURVEY VOLUME 19, PAGE 12	Right-of-Way Line	LND. 35-116
R.R. 8-29 = ROAD RECORD VOLUME 8, PAGE 29	Corporation Line	LND. 44-126
R/W = RIGHT OF WAY		LND. 62-41
AC. = ACRES		
TWP. = TOWNSHIP		
TR. = TRACT		
Ⓢ = LOT CREATED BY RECORDER'S PLAT		

ANNEXATIONS
LOT 1598, 1599
REC. 18-72
LOT 1610
REC. 18-126
STONE MEADOWS SUBDIVISION
SECTION 1
LOTS 1615-1652
REC. 19-1, 1A, 1B



PREPARED BY: MIAMI COUNTY ENGINEER'S MAP DEPARTMENT
PAUL P. HUELSKAMP, COUNTY ENGINEER
DATE: APRIL 23, 1999
REVISED: July 11, 2023 DCASSEL