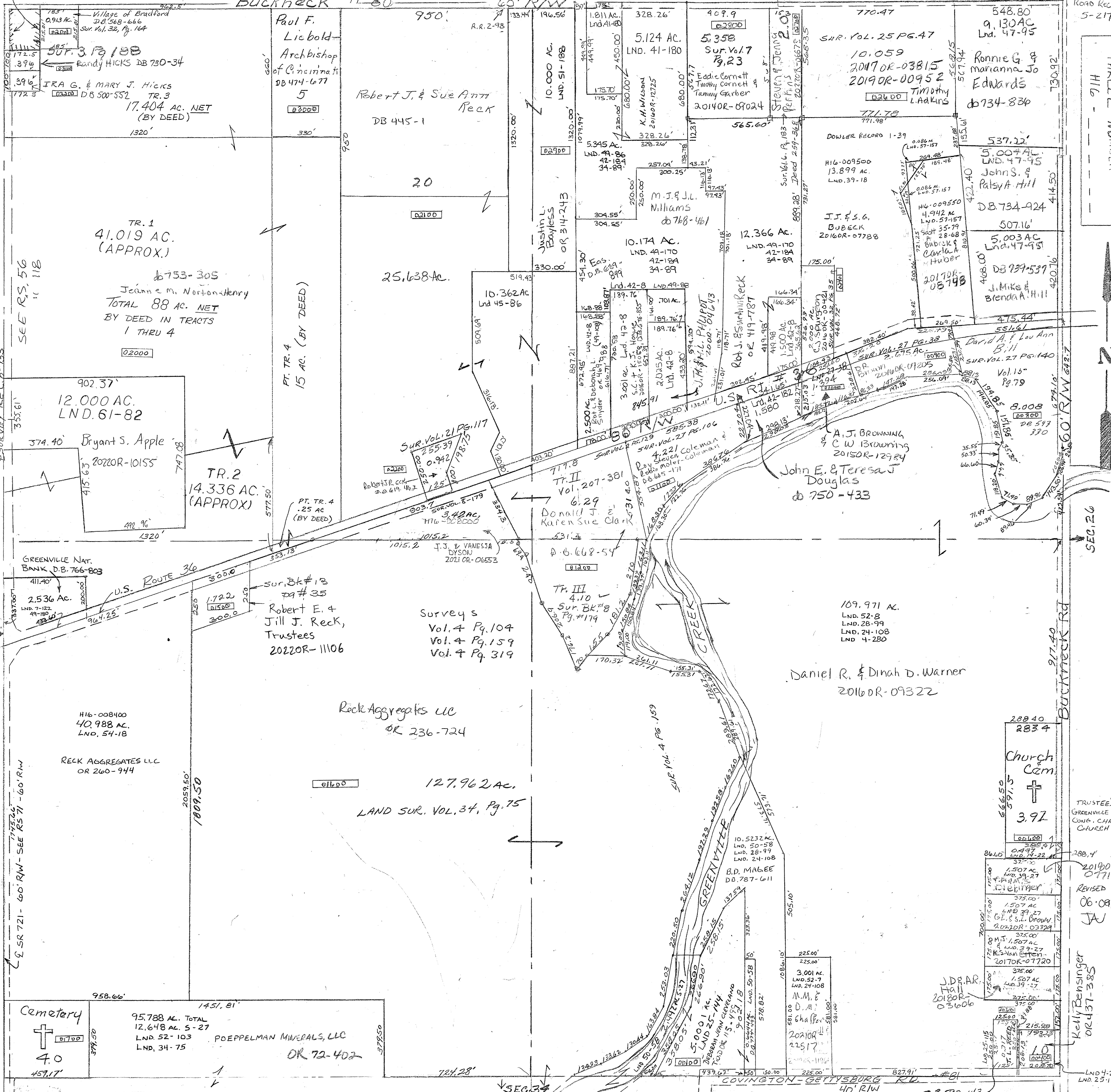


- Lnd. 41-180 NW Pt. NE Qtr.
- Lnd. 42-8 SW Pt. NE. Qtr.
- Lnd. 42-184 SW Pt. NE. Qtr.
- Lnd. 42-182 S. Cen. Pt. NE Qtr.
- Lnd. 45-86 SE Pt. NW Qtr. & SW Pt. NE Qtr.
- Lnd. 47-95 NE Pt. NE Qtr.
- Lnd. 49-86 NW Cor. NE Qtr.
- Lnd. 49-88 SW Cor. NE Qtr.
- Lnd. 49-170 SW Cor. NE Qtr.
- Vol. 6 - Pg. 183 - N Cen Pt NE
- Vol. 8 - Pg. 179 - Cen Pt Sec
- Vol. 13 - Pg. 35 - N Cen Pt SW
- Vol. 14 - Pg. 22 - E Cen Pt SE
- Vol. 15 - Pg. 79 - S Cen Pt NE
- Rec'd Vol. 8 Pg. 133 - Location State Rt #721
- 129 - SW Cor. NE.
- Vol. 1 page 104 - N Line SW
- Vol. 4 page 159 - W Side Green Creek
- Vol. 4 page 280 - SE Pt SE
- Vol. 4 page 319 - W Pt S 1/2
- Vol. 7 page 23 - N Cen Pt NE
- Vol. 7 page 122 - N NW Pt SW



PARCEL NUMBER

SEE R.S. 56 " 118

STATE ROUTE 721

BUCKNECK RD

COVINGTON-GETTSBURG RD

SEC 26