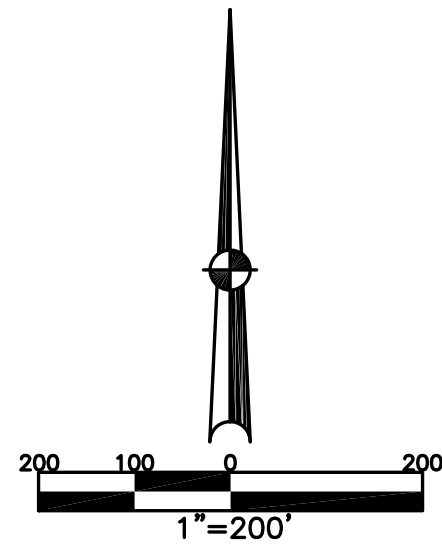


SECTION 17 & 20
TOWN 6
RANGE 5

VILLAGE OF WEST MILTON
MIAMI COUNTY, OHIO

PLAT N 72



ABBREVIATION LEGEND		
2014OR-07759	=	RECORDER'S DOCUMENT NUMBER
OR 152-548	=	OFFICIAL RECORD 152 PAGE 548
D.B. 613-172	=	DEED BOOK 613, PAGE 172
REC. 15-72	=	RECORDER'S PLAT BOOK 15, PAGE 72
LND. 33-15	=	LAND SURVEY VOLUME 33, PAGE 15
LOT 19-12	=	LOT SURVEY VOLUME 19, PAGE 12
R.R. 8-29	=	ROAD RECORD VOLUME 8, PAGE 29
R/W	=	RIGHT OF WAY
C	=	CENTERLINE
AC.	=	ACRES
TWP.	=	TOWNSHIP
TR.	=	TRACT
IL	=	INLOT

LINE LEGEND	
	Blow-up Boundary
	Property Line
	Lot Split Line
	Section Line
	Centerline
	Right-of-Way Line
	Corporation Line

SURVEY INDEX		
LND. 3-283	REC. 8-87	
LND. 14-116	REC. 11-48	
LND. 22-8	REC. 11-75	
LND. 33-148	REC. 18-72	
LND. 35-116	REC. 18-126	
LND. 36-4	REC. 19-1	
LND. 36-182	REC. 20-10	
LND. 40-183	REC. 20-104	
LND. 44-126	REC. 21-98	
LND. 46-84	REC. 22-93	
LND. 62-41	REC. 22-95	
	REC. 30-41	

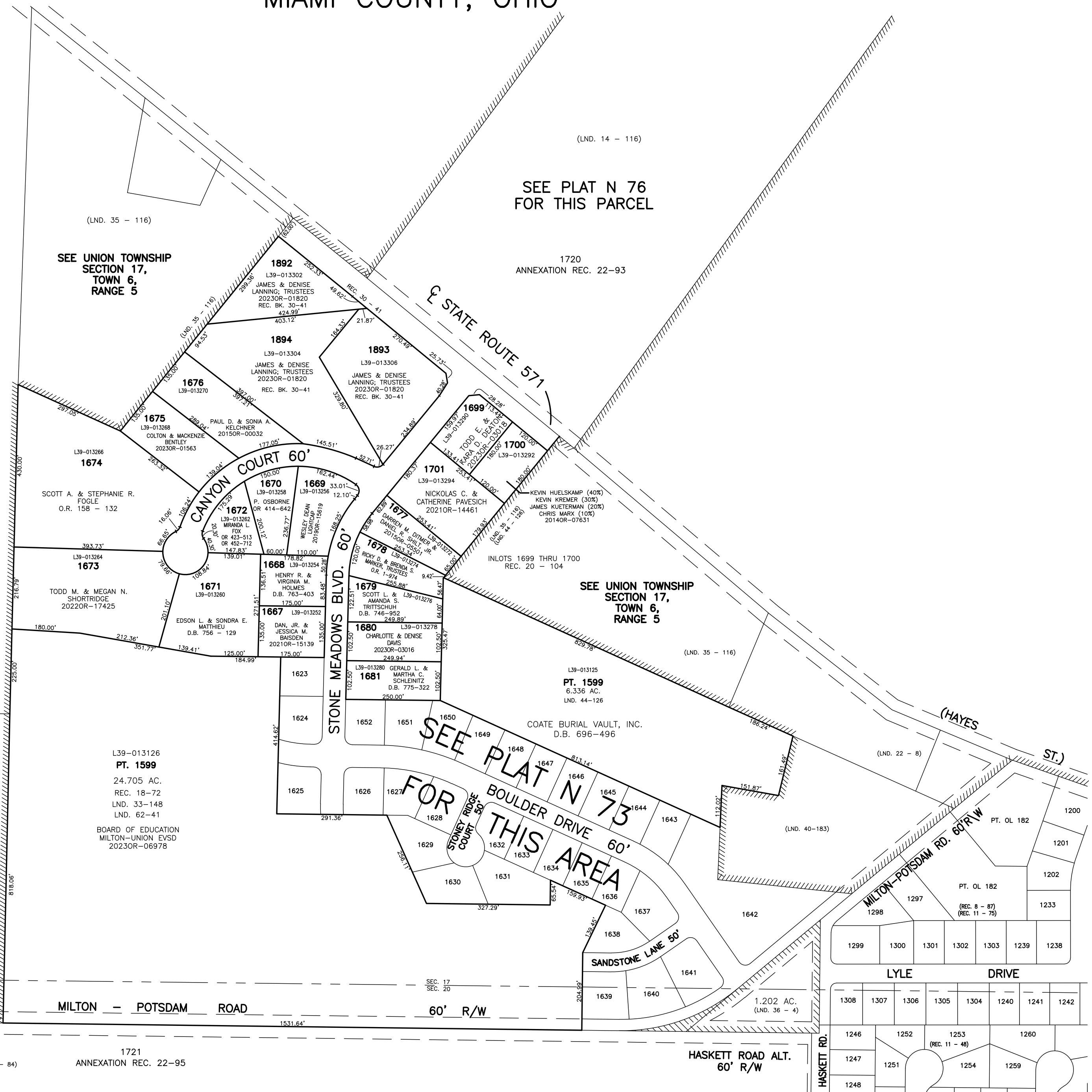
ANNEXATIONS
LOT 1598, 1599
REC. 18-72
LOT 1610
REC. 18-126

STONE MEADOWS SUBDIVISION
SECTION 1
LOTS 1615-1652
REC. 19-1, 1A, 1B

STONE MEADOWS SUBDIVISION
REPLAT OF PART OF SECTION 1
LOTS 1667-1681
REC. 20-10

SUBDIVISION OF IL 1610
LOTS 1699-1701
REC. 20-104

STONE MEADOWS REPLAT
LOTS 1711-1713
REC. 21-98



DAVIS ROAD

PREPARED BY: MIAMI COUNTY ENGINEER'S MAP DEPARTMENT
PAUL P. HUELSKAMP, COUNTY ENGINEER
DATE: APRIL 23, 1999
REVISED: November 3, 2023 DJACQUEMIN

1721
ANNEXATION REC. 22-95

HASKETT ROAD ALT.
60' R/W