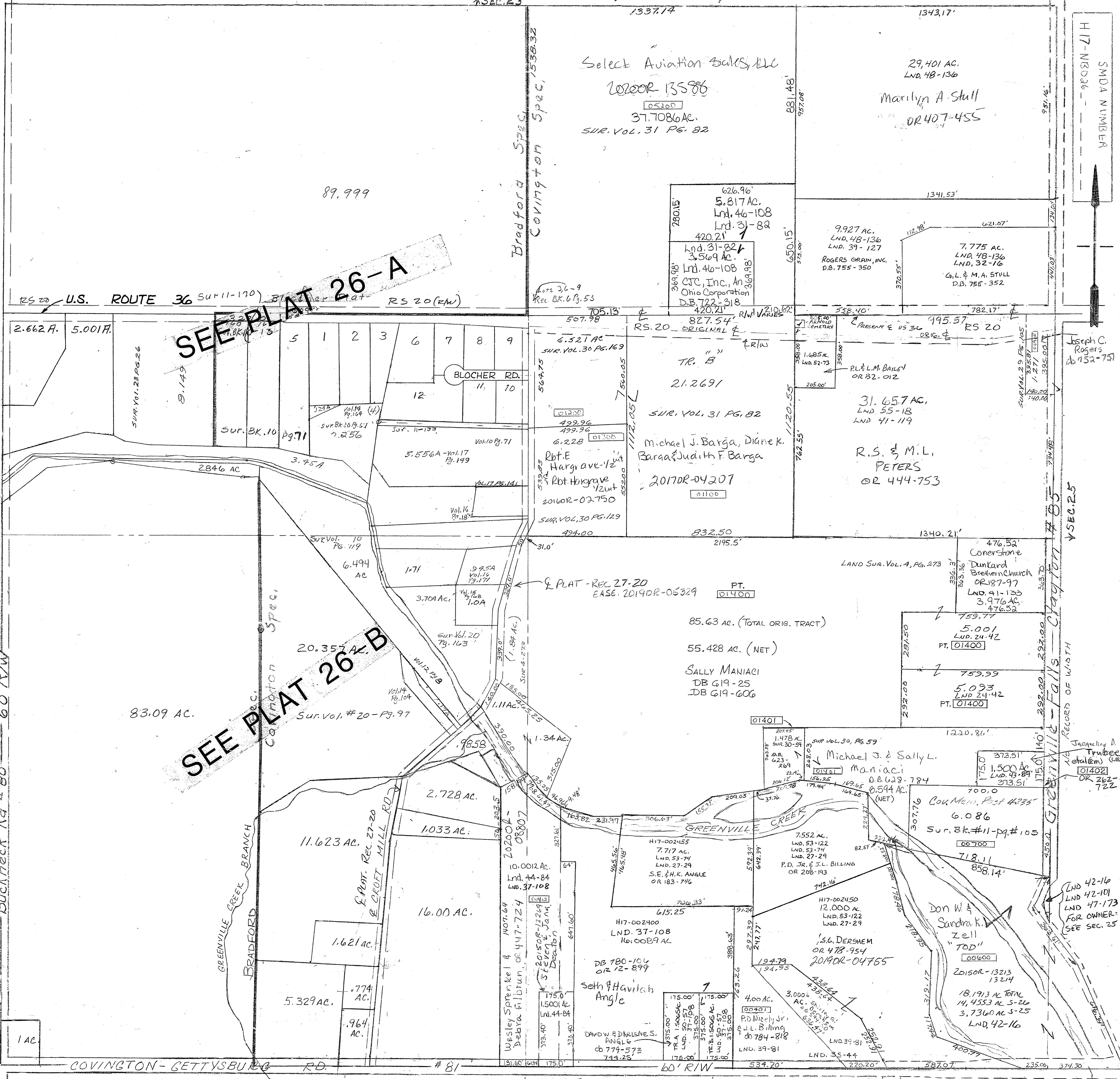


Lnd. 42-101 SE Cor SE Qtr.
Lnd. 43-89 E. Cen Pt. SE Qtr.
Lnd. 44-84 SE Cor SW Qtr. & SW Cor SE Qtr.
Lnd. 40-108 NW Pt NE Qtr.

Vol. 16 Pg. 171 N.E. Cor S.W.
Vol. 16 Pg. 180 S.E. Cor N.W. & E.Cen S.W.
Vol. 17 Pg. 121 S. Pt. S.W.
Vol. 17 Pg. 141 S.E. Cor N.W.
Vol. 17 Pg. 149 S.E. Pt. N.W.
Vol. 18 Pg. 119 S.E. Cor S.W.
Lnd. 41-133 NE Cor SE Qtr.
Lnd. 42-10 SE Cor SE Qtr.
A SEC. 27

Vol. 11 - Pg. 105 - E Cen Pt SE
133 - E Cen Pt NW
170 - E Cen Pt NW
50 - S.E. Pt NW
8 - E Cen Pt SW
9 - Cen Pt W 1/2
14 - E Cen Pt NW
14 - S Cen Pt NW
15 - Pt. 168 - N.E. Pt. S.W.

Surveys:
Vol. 1 page 245 - (Whole)
Vol. 4 page 273 N 1/4 SE
13 - S Cen Pt NW
67 - S Cen Pt NW
71 - S Pt NW
15 - Blocher Plat. S Pt NW
119 - Cen Pt W 1/2



SEE PLAT 26-A

SEE PLAT 26-B

SMDA NUMBER
H17-NB036

RECORD OF WITH
CLAYTON #85
V SEC. 25

Jacqueline A. Trubee
et al
[01402]
OR 262-722

LND 42-16
LND 42-101
LND 47-173
FOR OWNER -
SEE SEC. 25