

PARCEL NUMBER
H16-111111



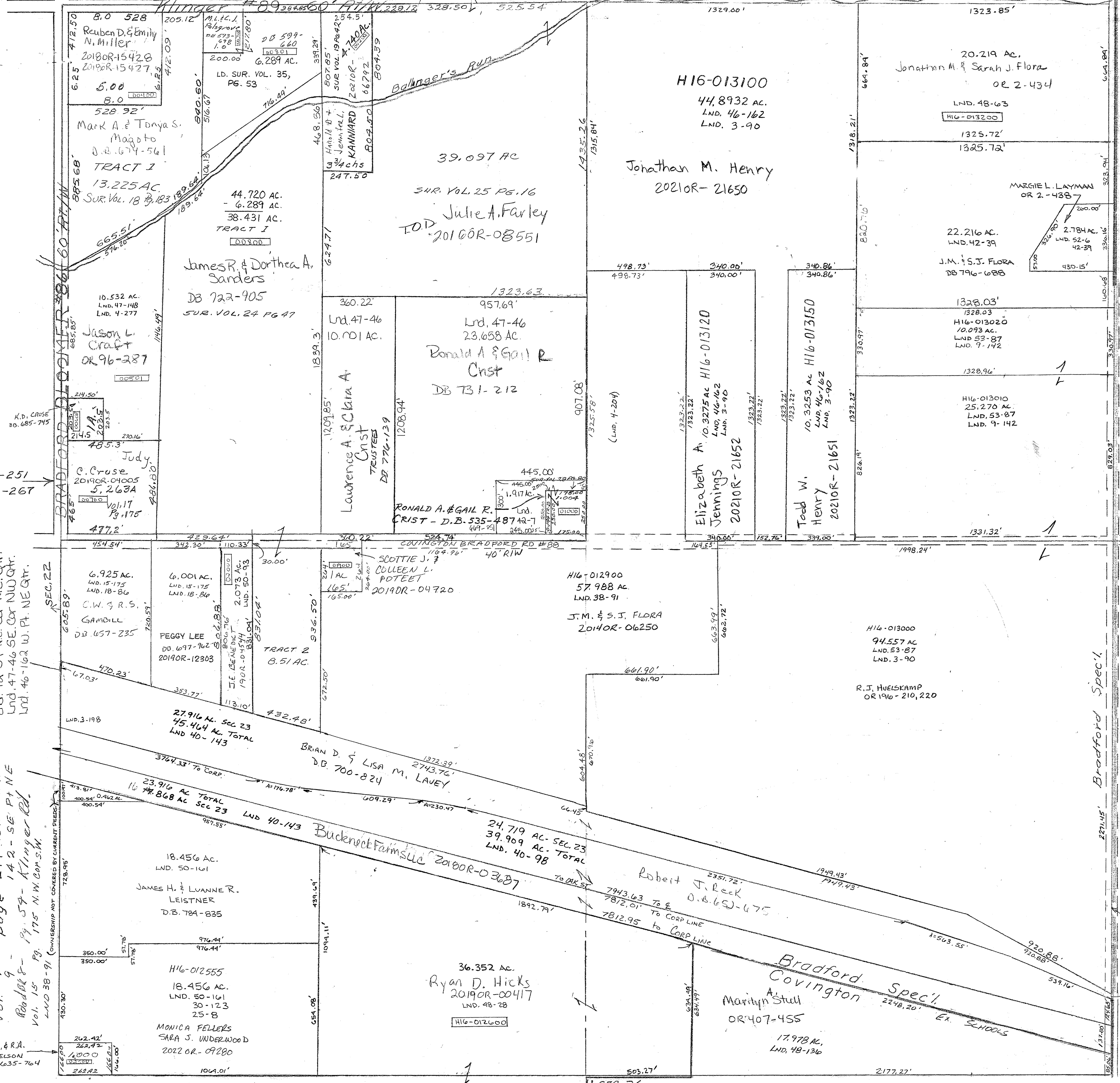
SEC. 24

Bradford Spec'l.
Covington Spec'l.
GREENVILLE FALLS - CLAYTON RD. # T-85 60' R/W & SCHOOL DISTRICT LINE

REVISED
6/15/22

5 Surveys
Vol. 3 - page 90 - Whole
Vol. 3 - page 198 - WPT SW
Vol. 4 - page 204 - SW P1 NW
Vol. 4 - page 277 - SW P1 NW
Vol. 9 - page 142 - SE P1 NE
Road 8 - Pg. 59 - Klinger Rd.
Vol. 15 - Pg. 175 N.W. COR. S.W.
LND 38-91 (OWNERSHIP NOT COVERED BY CURRENT PLATS)
Vol. 17 Pg. 175 N.W. COR. N.W.
Vol. 18 Pg. 86 N.W. COR. S.W.
Lnd. 42-7 SE Cor N.W. Qtr.
Lnd. 42-39 NE Cor N.E. Qtr.
Lnd. 47-46 SE Cor N.W. Qtr.
Lnd. 46-162 W. Pt. NE Qtr.

Vol. 191-251
Vol. 196-267



SEC. 26