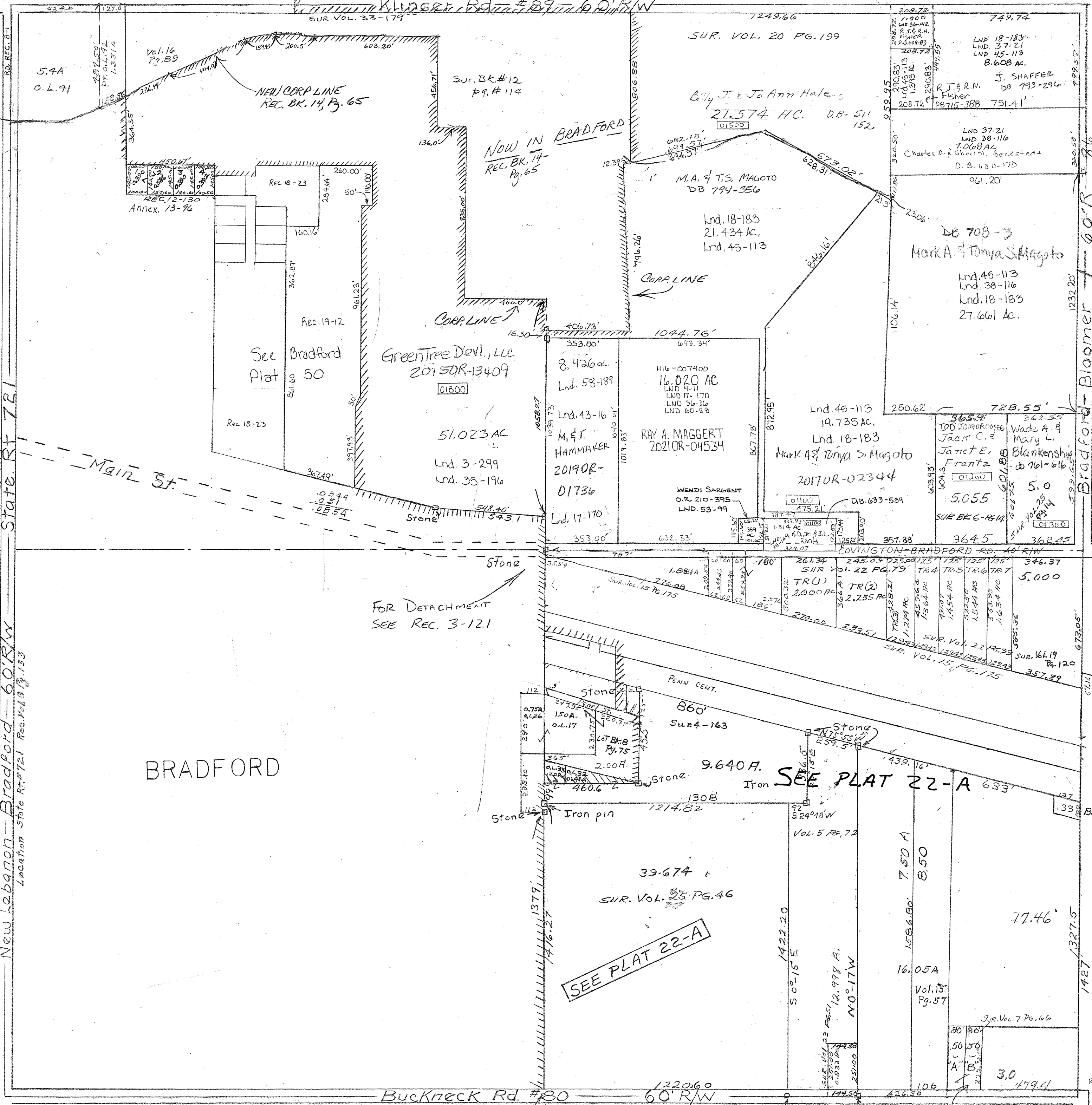


Range 4 Town 9 Section 22 SEC. 15 NEWBERRY TOWNSHIP PLAINVILLE



PARCEL NUMBER  
H16-113

Bradford-Bloomer  
#88

FOR DETACHMENT  
SEE REC. 3-121

SEE PLAT 22-A

SEE PLAT 22-A

REV. 3-18-21  
MISTAKES

Record Sur. 8 - Pg. 6 - NW Cor. NW. Annexation  
Vol. 17 Pg. 170 S.W. Cor. N.E.  
Vol. 19 Pg. 120 S.E. qtr.  
LND. 38-116 N.E. 1/4  
LND. 38-149 N.E. 1/4  
LND. 43-116 SW COR NEQRT.  
LND. 45-113 NE QTR.  
REC. 19-12 CAN. PT. NWQRT.  
LND. 60-88 NE 1/4 QTR.

Vol. 3 page 299 - NW. Qr.  
Vol. 4 page 11 - S.W. NE.  
Vol. 4 page 163 - NW. Cor. SE.  
Vol. 4 page 72 - S. Cor. SE.  
Vol. 5 page 14 - SE. Cor. NE.  
Vol. 6 page 66 - SE. Cor. SE.  
Vol. 7 page 109 - Bradford  
114 - NE. Cor. NW.

DARKE COUNTY  
State Rt. 721  
Bradford - 60' R/W  
Location State Rt. 721 Rec. # 1813-133

New Lebanon - Bradford - 60' R/W

Location State Rt. 721 Rec. # 1813-133

Location State Rt. 721 Rec. # 1813-133