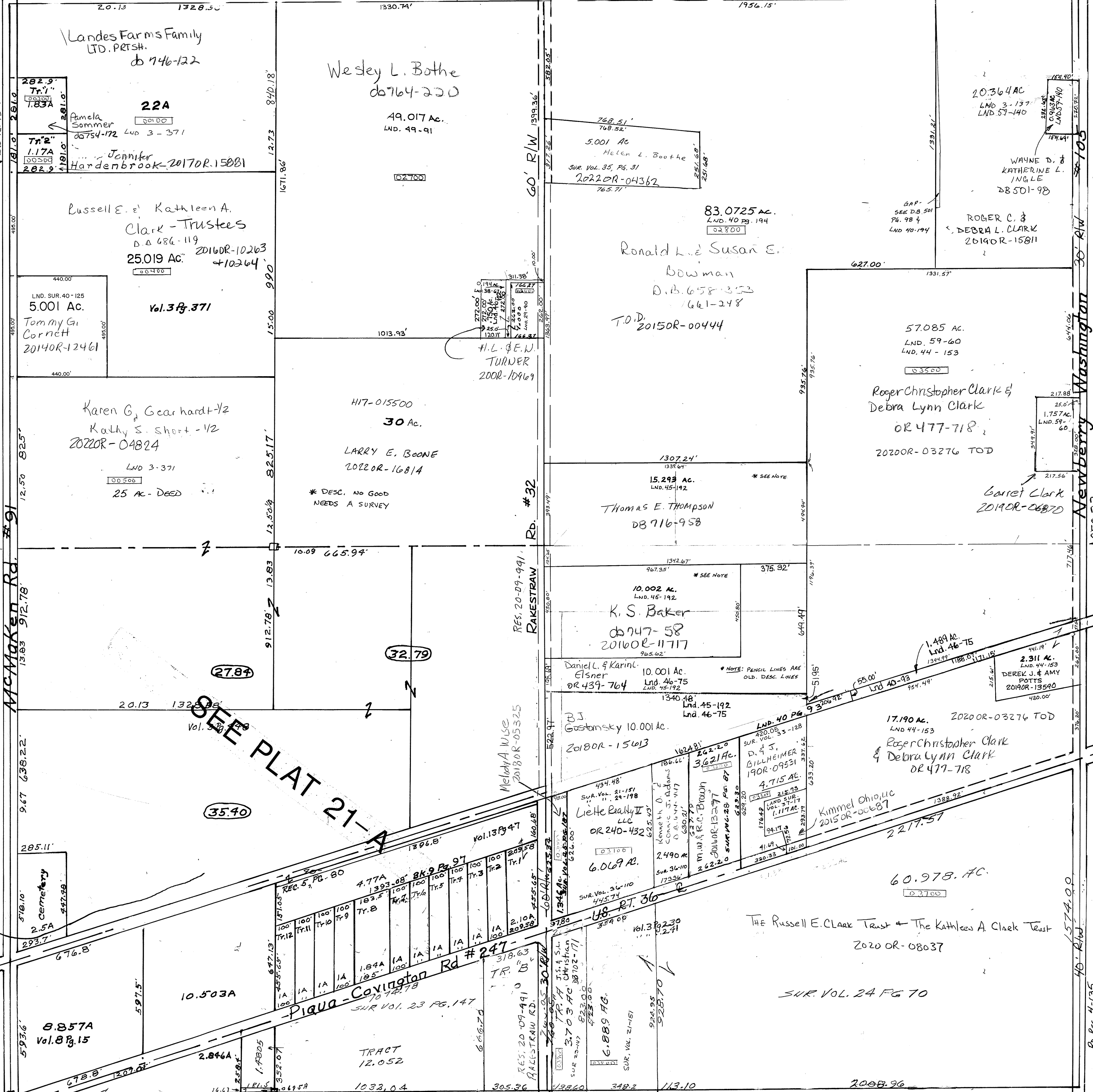


SE 1/4 36-110

LND. A-91 E. Pt. NW

Vol. 18 Pg. 30 S.W. QTR S.W. LND. SUR. VOL. 40 PG. 125 W. Cent. Pt. NW Lnd. 46-75 NW Cor. SE QTR LND. 40-122 E. Cent. Pt. NW QTR LND. 87-140 WEST N.E. QTR ROUTSON PLAT BK. 5 Pg. 80

- Surveys:
  - Vol. 3 Page 137 - Whole
  - Vol. 3 230 - S.W. Pt. S.E.
  - Vol. 3 241 - S.W. Pt. S.E.
  - Vol. 3 371 - W. Pt. N.W.
  - Vol. 3 448 - S.W. QTR
  - Vol. 9 15 - S.W. Pt. S.W.
  - Vol. 9 97 - E. Cent. Pt. S.W.
  - Vol. 9 116 - N.W. Pt. N.W.
  - Vol. 9 45 - N.W. Pt. N.W.
  - Vol. 12 47 - E. Cent. Pt. S.W.
  - Vol. 13



McMacken Rd. #91

Rakestraw Rd. #32

Newberry Washington Rd. #105

SEE PLAT 21-A

SMDA NUMBER H17-NB021



REVISED 11/29/22