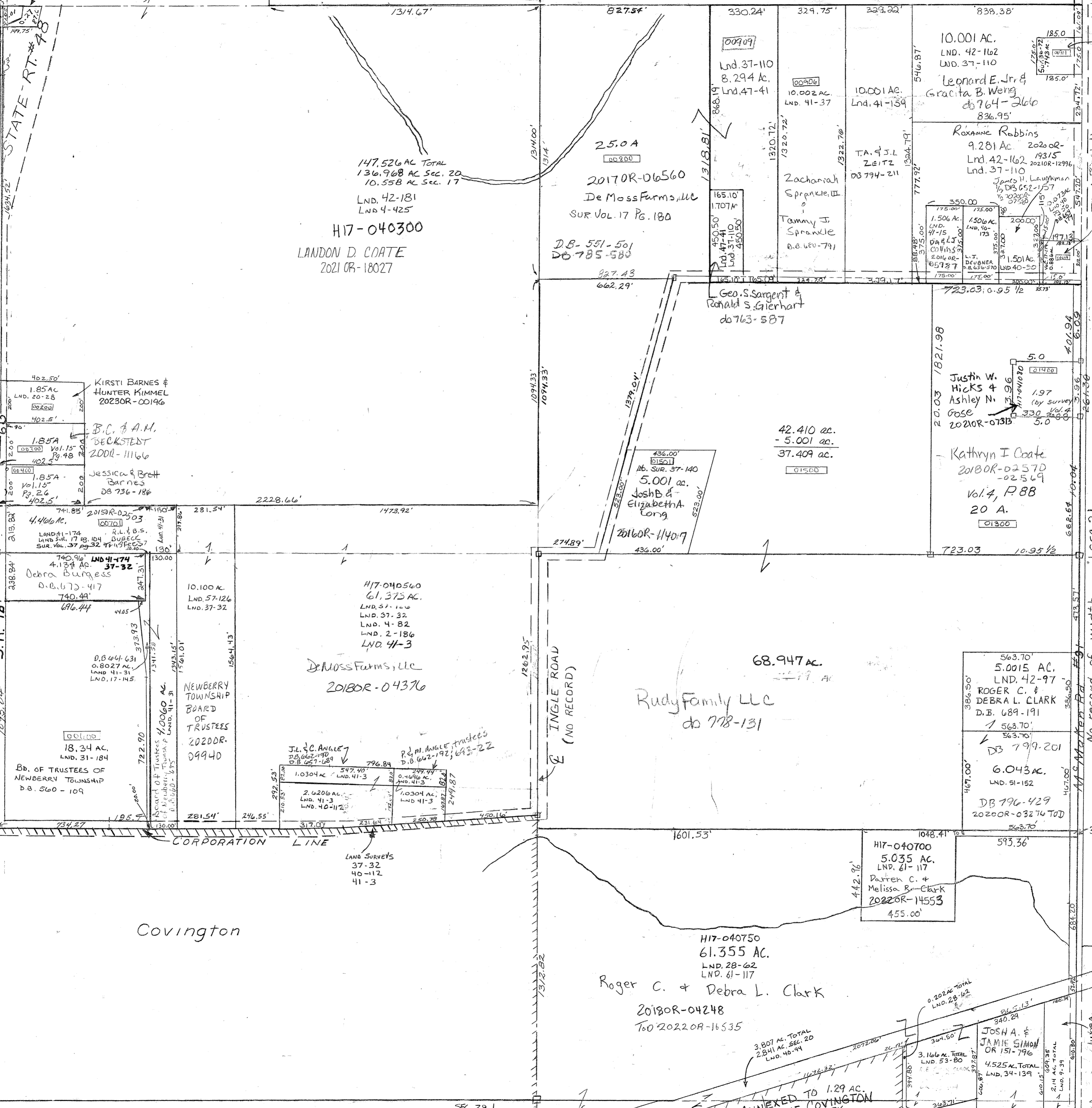


Vol. 2 Page 2
 Vol. 4 Page 4
 Vol. 4 Page 4
 Vol. 4 Page 4
 Vol. 4 Page 4
 Vol. 15 Page 15

186-Ft NW 1/4 SW
 82-NPT SW-SP NW-SW PINE
 88-SE PINE
 303-W Cen Pts W
 425-NW Qr
 39-SE Cor SE
 26-SW Cor NW

Vol. 15 Pg. 48 S.W. Pt. N.W.
 Vol. 16 Pg. 160 S.E. Pt. S.E.
 Vol. 17 Pg. 93 NW Cor. N.W.
 Vol. 17 Pg. 104 NW Cor. S.W. & W. & NW
 Vol. 17 Pg. 145 N.W. Pt. S.W.
 Vol. 17 Pg. 179 E. Pt. N.E.
 Vol. 17 Pg. 180 N.W. Pt. N.E.

Vol. 20 Pg. 28 S.W. Cor. NW Qr
 Lnd. 41-3 E. Cor. Pt. SW
 Lnd. 42-97 NE Cor SE Qtr.
 Lnd. 61-117 S. Pt. - SE Qtr.
 Lnd. 41-159 NE Cor NE Qtr.
 Lnd. 41-114 SW Cor NW Qtr.
 Lnd. 42-2 N.W. Cor. N.W. Qtr.
 Lnd. 42-162 E. Pt. NE Qtr.
 Lnd. 47-41 NW Pt NE Qtr.



117-040300
 117-040301
 117-040302
 117-040303
 117-040304
 117-040305
 117-040306
 117-040307
 117-040308
 117-040309
 117-040310
 117-040311
 117-040312
 117-040313
 117-040314
 117-040315
 117-040316
 117-040317
 117-040318
 117-040319
 117-040320
 117-040321
 117-040322
 117-040323
 117-040324
 117-040325
 117-040326
 117-040327
 117-040328
 117-040329
 117-040330
 117-040331
 117-040332
 117-040333
 117-040334
 117-040335
 117-040336
 117-040337
 117-040338
 117-040339
 117-040340
 117-040341
 117-040342
 117-040343
 117-040344
 117-040345
 117-040346
 117-040347
 117-040348
 117-040349
 117-040350
 117-040351
 117-040352
 117-040353
 117-040354
 117-040355
 117-040356
 117-040357
 117-040358
 117-040359
 117-040360
 117-040361
 117-040362
 117-040363
 117-040364
 117-040365
 117-040366
 117-040367
 117-040368
 117-040369
 117-040370
 117-040371
 117-040372
 117-040373
 117-040374
 117-040375
 117-040376
 117-040377
 117-040378
 117-040379
 117-040380
 117-040381
 117-040382
 117-040383
 117-040384
 117-040385
 117-040386
 117-040387
 117-040388
 117-040389
 117-040390
 117-040391
 117-040392
 117-040393
 117-040394
 117-040395
 117-040396
 117-040397
 117-040398
 117-040399
 117-040400

REVISOR: 1-24-2023